

Alpha-4 Antibody

Rabbit Polyclonal

Antigen Affinity Purified Protein ID P78318

Catalog No. A300-471A-M GeneID 3476

Lot No. A300-471A-M-1



APPLICATIONS	WB, IP
SPECIES REACTIVITY	Human, Mouse
PRESUMED REACTIVITY	Based on 100% sequence identity, this antibody is predicted to react with Rat
AMOUNT	100 µl (10 blots)
CONCENTRATION	400 µg/ml
STORAGE/SHELF LIFE	2 - 8° C / 1 year from date of receipt
PHYSICAL STATE	Liquid
BUFFER	Tris-buffered Saline containing 0.1% BSA and 0.09% Sodium Azide
ISOTYPE	IgG
ORIGIN	USA
PRODUCTION PROCEDURES	Antibody was affinity purified using an epitope specific to Alpha-4 (IGBP1) immobilized on solid support.

The epitope recognized by A300-471A-M maps to a region between residue 300 and the C-terminus (residue 339) of human Protein Phosphatase 2A, regulatory subunit alpha-4 (Immunoglobulin binding protein 1) using the numbering given in SwissProt entry P78318 (GeneID 3476).

APPLICATIONS Centrifuge tube to remove product from lid. Optimal working dilutions should be determined experimentally by the investigator. Prepare working dilution immediately before use.

Western Blot 1:1000

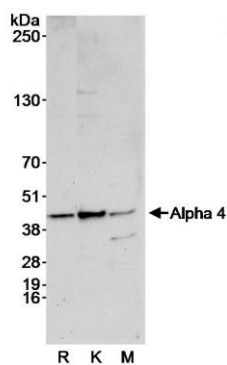
Immunoprecipitation The antibody contained within A300-471A-M has been qualified for use in immunoprecipitation; however, we recommend using the alternative formulation of this antibody found as product A300-471A.

APPLICATION NOTES Western blot of immunoprecipitates performed using Normal Pig Serum (Cat. No. S100-020), Goat anti-Rabbit Light Chain HRP Conjugate (Cat. No. A120-113P) and 4-20% SDS-PAGE (link to IP-western blot protocol in Additional Info section below).

Western blot of lysates performed using standard western blot reagents and 4-20% SDS-PAGE.

ADDITIONAL INFO <https://www.bethyl.com/product/A300-471A-M>
Use the link above to view SDS, a current list of citations, and other product specific information.
IP-western blot protocol: https://www.bethyl.com/content/protocol_IP_WB

This document certifies that this product has met all of the quality control standards defined by Bethyl Laboratories, Inc.
Eric McIntush, PhD | Chief Scientific Officer Date: June 21, 2019



Detection of Alpha 4 by western blot. *Samples:* Whole cell lysate (50 μ g) from Ramos (R), K-562 (K) and mouse NIH 3T3 (M) cells. *Antibody:* Affinity purified rabbit anti-Alpha 4 antibody A300-471A-M used at 1:1000. *Detection:* Chemiluminescence with an exposure time of 30 seconds.