

DDX3 Antibody

Rabbit Polyclonal

Antigen Affinity Purified

Protein ID NP_001347.2

Catalog No. A300-476A

GeneID 1654

Lot No. A300-476A-1



APPLICATIONS	WB, IP
SPECIES REACTIVITY	Human
PRESUMED REACTIVITY	Based on 100% sequence identity, this antibody is predicted to react with Mouse, Orangutan and Chimpanzee
AMOUNT	100 µl
CONCENTRATION	1000 µg/ml
STORAGE/SHELF LIFE	2 - 8° C / 1 year from date of receipt
PHYSICAL STATE	Liquid
BUFFER	Tris-citrate/phosphate buffer, pH 7 to 8 containing 0.09% Sodium Azide
ISOTYPE	IgG
ORIGIN	USA
PRODUCTION PROCEDURES	Antibody was affinity purified using an epitope specific to DDX3 immobilized on solid support.

The epitope recognized by A300-476A maps to a region between residue 600 and the C-terminus (residue 661) of human DEAD (Asp-Glu-Ala-Asp) box polypeptide 3 using the numbering given in entry NP_001347.2 (GeneID 1654).

Immunoglobulin concentration was determined by extinction coefficient: absorbance at 280 nm of 1.4 equals 1.0 mg of IgG.

APPLICATIONS Centrifuge tube to remove product from lid. Optimal working dilutions should be determined experimentally by the investigator. Prepare working dilution immediately before use.

Western Blot 1:5,000 - 1:15,000

Immunoprecipitation 2 - 5 µg/mg lysate

APPLICATION NOTES Western blot of immunoprecipitates performed using Normal Pig Serum (Cat. No. S100-020), Goat anti-Rabbit Light Chain HRP Conjugate (Cat. No. A120-113P) and 4-8% SDS-PAGE (link to IP-western blot protocol in Additional Info section below).

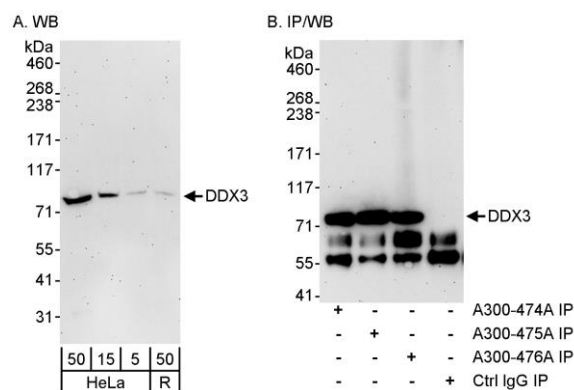
Western blot of lysates performed using standard western blot reagents and 4-8% SDS-PAGE.

ADDITIONAL INFO <https://www.bethyl.com/product/A300-476A>

Use the link above to view SDS, a current list of citations, and other product specific information.

IP-western blot protocol: https://www.bethyl.com/content/protocol_IP_WB

This document certifies that this product has met all of the quality control standards defined by Bethyl Laboratories, Inc.
Eric McIntush, PhD | Chief Scientific Officer Date: June 21, 2019



Detection of DDX3 by western blot and immunoprecipitation.

Samples: A. Whole cell lysate from HeLa (5, 15 and 50 μ g) and Ramos (50 μ g) cells. B. Whole cell lysate (1 mg/IP; 1/4 of IP loaded/lane) from HeLa cells.

Antibodies: Affinity purified rabbit anti-DDX3 antibody BL1651 (Cat. No. A300-476A) used at 0.04 μ g/ml (A) and 0.1 μ g/ml (B) for western blot and at 3 μ g/mg lysate for IP (B). DDX3 was also immunoprecipitated using rabbit anti-DDX3 antibodies BL1649 (Cat. No. A300-474A) and BL1650 (Cat. No. A300-475A) at 3 μ g/mg lysate.

Detection: Chemiluminescence with an exposure time of 3 minutes (A and B).