

CamK4 Antibody

Rabbit Polyclonal

Antigen Affinity Purified

Protein ID Q16566

Catalog No. A300-494A

GeneID 814

Lot No. A300-494A-1



APPLICATIONS	WB, IP, IHC
SPECIES REACTIVITY	Human
AMOUNT	100 µl
CONCENTRATION	200 µg/ml
STORAGE/SHELF LIFE	2 - 8° C / 1 year from date of receipt
PHYSICAL STATE	Liquid
BUFFER	Tris-buffered Saline containing 0.1% BSA and 0.09% Sodium Azide
ISOTYPE	IgG
ORIGIN	USA

PRODUCTION PROCEDURES Antibody was affinity purified using an epitope specific to CamK4 immobilized on solid support.

The epitope recognized by A300-494A maps to a region between residue 425 and the C-terminus (residue 473) of human Calcium/Calmodulin-dependent Protein Kinase IV using the numbering given in Swiss-Prot entry Q16566 (GeneID 814).

Immunoglobulin concentration was determined by extinction coefficient: absorbance at 280 nm of 1.4 equals 1.0 mg of IgG.

APPLICATIONS Centrifuge tube to remove product from lid. Optimal working dilutions should be determined experimentally by the investigator. Prepare working dilution immediately before use.

Western Blot 1:5,000 - 1:15,000

Immunoprecipitation 3 - 5 µg/mg lysate

Immunohistochemistry 1:200 - 1:1,000

APPLICATION NOTES Western blot of immunoprecipitates performed using Normal Pig Serum (Cat. No. S100-020), Goat anti-Rabbit Light Chain HRP Conjugate (Cat. No. A120-113P) and 4-20% SDS-PAGE (link to IP-western blot protocol in Additional Info section below).

Western blot of lysates performed using standard western blot reagents and 4-20% SDS-PAGE.

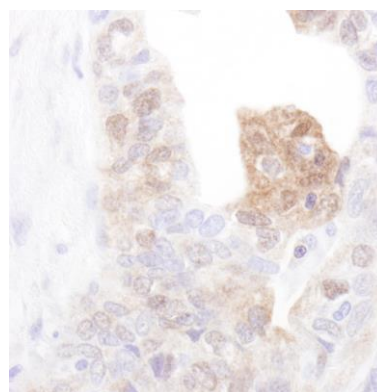
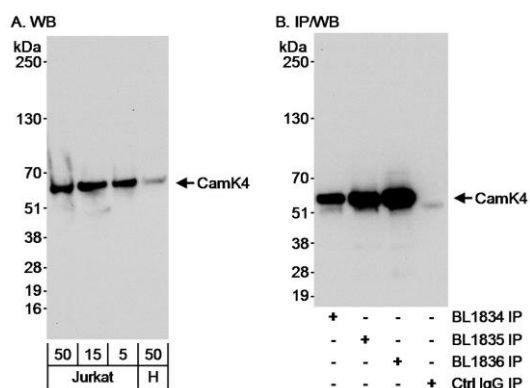
IHC HUMAN CONTROLS Ovarian Carcinoma

ADDITIONAL INFO <https://www.bethyl.com/product/A300-494A>

Use the link above to view SDS, a current list of citations, and other product specific information.

IP-western blot protocol: https://www.bethyl.com/content/protocol_IP_WB

This document certifies that this product has met all of the quality control standards defined by Bethyl Laboratories, Inc.
Eric McIntush, PhD | Chief Scientific Officer Date: June 21, 2019



Detection of human CamK4 by western blot and immunoprecipitation. *Samples:* A) Whole cell lysate from Jurkat (5, 15 and 50 µg) and HeLa (50 µg) cells. B) Whole cell lysate (1 mg/IP; 1/4 of IP loaded/lane) from Jurkat cells. *Antibodies:* Affinity purified rabbit anti-CamK4 antibody BL1836 (Cat. No. A300-494A) used at 0.04 µg/ml for WB (A and B) and at 3 µg/mg lysate for IP (B). CamK4 was also immunoprecipitated using CamK4 antibodies BL1834 (Cat. No. A300-492A) and BL1835 (Cat. No. A300-493A) used at 3 µg/mg lysate for IP. *Detection:* Chemiluminescence with an exposure time of 30 seconds.

Detection of human CamK4 by immunohistochemistry. *Sample:* FFPE section of human ovarian carcinoma. *Antibody:* Affinity purified rabbit anti-CamK4 (Cat. No. A300-494A) used at a dilution of 1:1,000 (0.2 µg/ml). *Detection:* DAB