

Estrogen Receptor Alpha Antibody

Rabbit Polyclonal

Antigen Affinity Purified Protein ID P03372

Catalog No. A300-498A-T GenelD 2099

Lot No. A300-498A-T-3

APPLICATIONS WB, IP

SPECIES REACTIVITY Human

AMOUNT 10 µl

CONCENTRATION 1000 µg/ml

STORAGE/SHELF LIFE 2 – 8°C / 1 year from date of receipt

PHYSICAL STATE Liquid

BUFFER Tris-citrate/phosphate buffer, pH 7 to 8 containing 0.09% Sodium Azide

ISOTYPE IgG

ORIGIN USA

PRODUCTION PROCEDURES Antibody was affinity purified using an epitope specific to Estrogen Receptor Alpha immobilized on solid support.

The epitope recognized by A300-498A-T maps to a region between residue 550 and the C-terminus (residue 595) of human Estrogen Receptor Alpha using the numbering given in SwissProt entry P03372 (GenelD 2099).

APPLICATIONS Centrifuge tube to remove product from lid. Optimal working dilutions should be determined experimentally by the investigator. Prepare working dilution immediately before use.

Western Blot 1:2,000 – 1:10,000

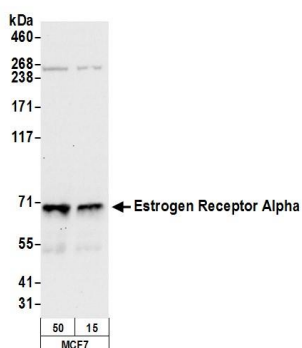
Immunoprecipitation 2 – 10 µg/mg lysate

ADDITIONAL INFO <https://www.bethyl.com/product/A300-498A-T>

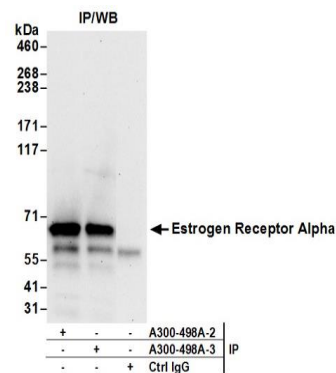
Use the link above to view SDS, a current list of citations, and other product specific information.

IP-western blot protocol: https://www.bethyl.com/content/protocol_IP_WB

This document certifies that this product has met all of the quality control standards defined by Bethyl Laboratories, Inc.
Michael Spencer, PhD Date: June 6, 2022



Detection of human Estrogen Receptor Alpha by western blot. *Samples:* Whole cell lysate (50 µg) from MCF-7 cells prepared using NETN lysis buffer. *Antibody:* Affinity purified rabbit anti-Estrogen Receptor Alpha antibody A300-498A (lot A300-498A-3) used for WB at 0.1 µg/ml. *Detection:* Chemiluminescence with an exposure time of 30 seconds.



Detection of human Estrogen Receptor Alpha by western blot of immunoprecipitates. *Samples:* Whole cell lysate (0.5 or 1.0 mg per IP reaction; 20% of IP loaded) from MCF-7 cells prepared using NETN lysis buffer. *Antibodies:* Affinity purified rabbit anti-Estrogen Receptor Alpha antibody A300-498A (lot A300-498A-3) used for IP at 6 µg per reaction. Estrogen Receptor Alpha was also immunoprecipitated by previous lot of this antibody A300-498A-2. For blotting immunoprecipitated Estrogen Receptor Alpha, A300-498A was used at 1 µg/ml. *Detection:* Chemiluminescence with an exposure time of 30 seconds.