

# 4EBP1 Antibody

Rabbit Polyclonal

Antigen Affinity Purified

Protein ID NP\_004086.1

Catalog No. A300-501A

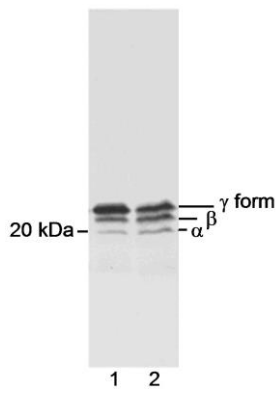
GeneID 1978

Lot No. A300-501A-1

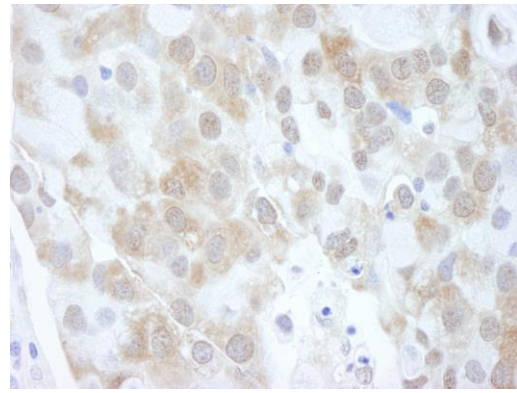


<b>APPLICATIONS</b>	WB, IHC
<b>SPECIES REACTIVITY</b>	Human
<b>PRESUMED REACTIVITY</b>	Based on 100% sequence identity, this antibody is predicted to react with Mouse and Rat
<b>AMOUNT</b>	100 µl
<b>CONCENTRATION</b>	1000 µg/ml
<b>STORAGE/SHELF LIFE</b>	2 - 8° C / 1 year from date of receipt
<b>PHYSICAL STATE</b>	Liquid
<b>BUFFER</b>	Tris-citrate/phosphate buffer, pH 7 to 8 containing 0.09% Sodium Azide
<b>ISOTYPE</b>	IgG
<b>ORIGIN</b>	USA
<b>PRODUCTION PROCEDURES</b>	<p>Antibody was affinity purified using an epitope specific to 4EBP1 immobilized on solid support.</p> <p>The epitope recognized by A300-501A maps to a region between residue 75 and the C-terminus (residue 118) of human eukaryotic translation initiation factor 4E binding protein 1 using the numbering given in entry NP_004086.1 (GeneID 1978).</p> <p>Immunoglobulin concentration was determined by extinction coefficient: absorbance at 280 nm of 1.4 equals 1.0 mg of IgG.</p>
<b>APPLICATIONS</b>	<p>Centrifuge tube to remove product from lid. Optimal working dilutions should be determined experimentally by the investigator. Prepare working dilution immediately before use.</p> <p>Western Blot 1:1,000 – 1:6,000</p> <p>Immunohistochemistry 1:5,000 – 1:20,000. Epitope retrieval with citrate buffer pH 6.0 is recommended for FFPE tissue sections.</p>
<b>APPLICATION NOTES</b>	Western blot of lysates performed using standard western blot reagents and 4-12% SDS-PAGE.
<b>IHC HUMAN CONTROLS</b>	Breast Carcinoma, Colon Carcinoma
<b>IHC MOUSE CONTROLS</b>	Squamous Cell Carcinoma
<b>ADDITIONAL INFO</b>	<p><a href="https://www.bethyl.com/product/A300-501A">https://www.bethyl.com/product/A300-501A</a></p> <p>Use the link above to view SDS, a current list of citations, and other product specific information.</p>

This document certifies that this product has met all of the quality control standards defined by Bethyl Laboratories, Inc.  
Eric McIntush, PhD | Chief Scientific Officer Date: June 21, 2019



**Detection of 4EBP1 by western blot.** *Samples:* Whole cell lysate (100 µg) from RINm5F insulinoma exposed to high or low concentration of leucine. *Antibody:* Affinity purified rabbit anti-4EBP1 (Cat. No. A300-501A) used at 0.25 µg/ml. *Detection:* Chemiluminescence.



**Detection of human 4EBP1 by immunohistochemistry.** *Sample:* FFPE section of human breast carcinoma. *Antibody:* Affinity purified rabbit anti-4EBP1 (Cat. No. A300-501A) used at a dilution of 1:20,000 (0.05 µg/ml). *Detection:* DAB