

DDX1 Antibody

Rabbit Polyclonal

Antigen Affinity Purified

Protein ID AAH12739.1

Catalog No. A300-521A

GeneID 1653

Lot No. A300-521A-2



APPLICATIONS	WB, IP, IHC
SPECIES REACTIVITY	Human, Mouse
PRESUMED REACTIVITY	Based on 100% sequence identity, this antibody is predicted to react with Rat, Chicken and Bovine
AMOUNT	100 µl
CONCENTRATION	200 µg/ml
STORAGE/SHELF LIFE	2 - 8° C / 1 year from date of receipt
PHYSICAL STATE	Liquid
BUFFER	Tris-buffered Saline containing 0.1% BSA and 0.09% Sodium Azide
ISOTYPE	IgG
ORIGIN	USA
PRODUCTION PROCEDURES	Antibody was affinity purified using an epitope specific to DDX1 immobilized on solid support.

The epitope recognized by A300-521A maps to a region between residue 650 and the C-terminus (residue 697) of human DEAD (Asp-Glu-Ala-Asp) Box Polypeptide 1 using the numbering given in entry AAH12739.1 (GeneID 1653).

Immunoglobulin concentration was determined by extinction coefficient: absorbance at 280 nm of 1.4 equals 1.0 mg of IgG.

APPLICATIONS Centrifuge tube to remove product from lid. Optimal working dilutions should be determined experimentally by the investigator. Prepare working dilution immediately before use.

Western Blot 1:2,000 - 1:10,000

Immunoprecipitation 2 - 10 µg/mg lysate

Immunohistochemistry 1:100 - 1:500. Epitope retrieval with citrate buffer pH 6.0 is recommended for FFPE tissue sections.

APPLICATION NOTES Western blot of immunoprecipitates performed using Normal Pig Serum (Cat. No. S100-020), Goat anti-Rabbit Light Chain HRP Conjugate (Cat. No. A120-113P) and 4-8% SDS-PAGE (link to IP-western blot protocol in Additional Info section below).

Western blot of lysates performed using standard western blot reagents and 4-8% SDS-PAGE.

IHC HUMAN CONTROLS Ovarian Carcinoma, Testicular Seminoma

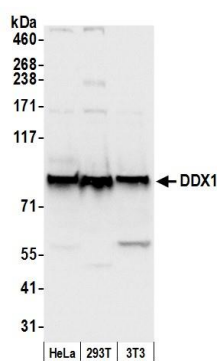
IHC MOUSE CONTROLS Renal Cell Carcinoma

ADDITIONAL INFO <https://www.bethyl.com/product/A300-521A>

Use the link above to view SDS, a current list of citations, and other product specific information.

IP-western blot protocol: https://www.bethyl.com/content/protocol_IP_WB

This document certifies that this product has met all of the quality control standards defined by Bethyl Laboratories, Inc.
Eric McIntush, PhD | Chief Scientific Officer Date: June 21, 2019

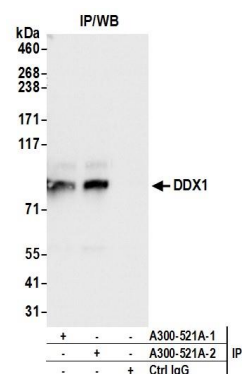


Detection of human and mouse DDX1 by western blot.

Samples: Whole cell lysate (50 µg) from HeLa, HEK293T, and mouse NIH 3T3 cells prepared using NETN lysis buffer.

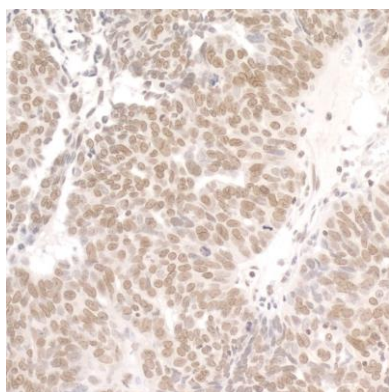
Antibody: Affinity purified rabbit anti-DDX1 antibody A300-521A (lot A300-521A-2) used for WB at 0.1 µg/ml.

Detection: Chemiluminescence with an exposure time of 1 second.



Detection of human DDX1 by western blot of immunoprecipitates.

Samples: Whole cell lysate (0.5 or 1.0 mg per IP reaction; 20% of IP loaded) from HeLa cells prepared using NETN lysis buffer. *Antibodies:* Affinity purified rabbit anti-DDX1 antibody A300-521A (lot A300-521A-2) used for IP at 6 µg per reaction. DDX1 was also immunoprecipitated by a previous lot of this antibody (lot A300-521A-1). For blotting immunoprecipitated DDX1, A300-521A was used at 1 µg/ml. *Detection:* Chemiluminescence with an exposure time of 1 second.

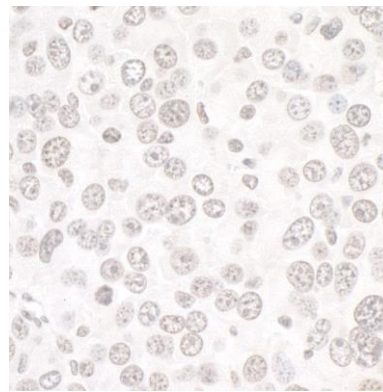


Detection of human DDX1 by immunohistochemistry.

Sample: FFPE section of human ovarian carcinoma.

Antibody: Affinity purified rabbit anti-DDX1 (Cat. No. A300-521A Lot2) used at a dilution of 1:200 (1 µg/ml).

Detection: DAB



Detection of mouse DDX1 by immunohistochemistry.

Sample: FFPE section of mouse renal cell carcinoma.

Antibody: Affinity purified rabbit anti-DDX1 (Cat. No. A300-521A Lot2) used at a dilution of 1:200 (1 µg/ml).

Detection: DAB