

DDX5 Antibody

Rabbit Polyclonal

Antigen Affinity Purified

Catalog No. A300-523A

Lot No. A300-523A-1

Protein ID NP_004387.1

Gene ID 1655



APPLICATIONS WB, IP, IHC-P, IF

REACTIVITY TESTED Human, Mouse

PRESUMED REACTIVITY Based on 100% sequence identity, this antibody is predicted to react with Rat, Bovine, Dog, Horse, Rabbit, Guinea pig_10141, Panda, Orangutan, Rhesus Monkey, Gorilla, Chimpanzee, Duckbill platypus, Tasmanian devil, White-tufted-ear marmoset, Crab-eating macaque and Northern white-cheeked gibbon.

ISOTYPE IgG

AMOUNT 0.1 ml at 0.2 mg/ml

STORAGE/SHELF LIFE 2 - 8° C / 1 year from date of receipt

PHYSICAL STATE Liquid

BUFFER Tris-buffered Saline with 0.1% BSA containing 0.09% Sodium Azide

ORIGIN USA

PRODUCTION PROCEDURES Antibody was affinity purified using an epitope specific to DDX5 immobilized on solid support.

The epitope recognized by A300-523A maps to a region between residue 575 and the C-terminus (residue 614) of human DEAD (Asp-Glu-Ala-Asp) Polypeptide 5 using the numbering given in entry NP_004387.1 (GeneID 1655).

Immunoglobulin concentration was determined by extinction coefficient: absorbance at 280 nm of 1.4 equals 1.0 mg of IgG.

APPLICATIONS Centrifuge tube to remove product from lid. Optimal working dilutions should be determined experimentally by the investigator. Prepare working dilution immediately before use.

Western Blot 1:2,500 - 1:10,000

Immunoprecipitation 2 to 5 µg/mg lysate

Immunohistochemistry 1:200 to 1:1,000. Epitope retrieval with citrate buffer pH6.0 is recommended for FFPE tissue sections.

Immunofluorescence 1:50 to 1:500

APPLICATION NOTES Validation by IP/Western Blot was performed using a 4-20% SDS-PAGE gel and ReliaBLOT® Reagents (Cat. No. WB120).

IHC validation was performed using Immunohistochemistry Accessory Kit (Cat. # IHC-101).

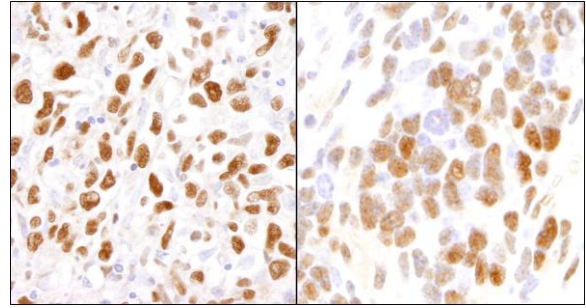
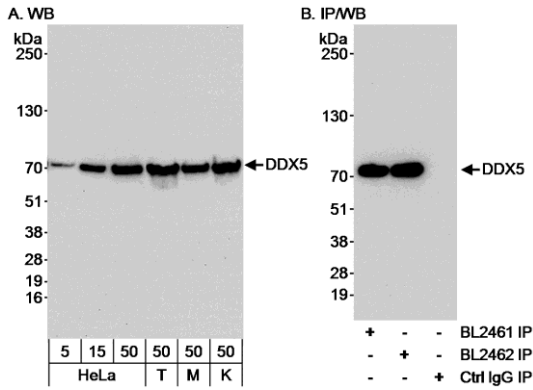
IHC HUMAN CONTROLS Breast Carcinoma, Colon Carcinoma, Laryngeal Squamous Cell Carcinoma, Linitis Plastica Stomach Cancer, Metastatic Lymph Node, Ovarian Carcinoma, Prostate Carcinoma, Skin Basal Cell Carcinoma, Testicular Seminoma

IHC MOUSE CONTROLS Colon Carcinoma CT26, Fibroma, Squamous Cell Carcinoma, Teratoma

ADDITIONAL INFO <http://www.bethyl.com/product/A300-523A>

Use the link above to view SDS, a current list of citations, and other product specific information.

DDX5 Antibody: A300-523A



Detection of Human DDX5 by Western Blot and Immunoprecipitation. *Sample:* A) Whole cell lysate from HeLa (5, 15 and 50 µg), 293T (T; 50 µg), MCF7 (M; 50 µg) and K562 (K; 50 µg) cells. B) Whole cell lysate (1 mg) from HeLa cells. *Antibodies:* Affinity purified rabbit anti-DDX5 antibody BL2462 (Cat. No. A300-523A) used at 0.04 µg/ml for WB (A and B) and at 3 µg/mg lysate for IP (B). DDX5 was also immunoprecipitated with rabbit anti-DDX5 antibody BL2461 (Cat. No. A300-522A) used at 3 µg/mg lysate. *Detection:* Chemiluminescence with an exposure time of 30 seconds.

Detection of Human and Mouse DDX5 by Immunohistochemistry. *Sample:* FFPE section of human metastatic lymph node (left) and mouse teratoma (right). *Antibody:* Affinity purified rabbit anti-DDX5 (Cat. No. A300-523A) used at a dilution of 1:200 (1µg/ml). *Detection:* DAB.