

UBAP2L/NICE4 Antibody

Rabbit Polyclonal

Antigen Affinity Purified

Protein ID AAH03170.1

Catalog No. A300-533A

GeneID 9898

Lot No. A300-533A-2



APPLICATIONS	WB, IP
SPECIES REACTIVITY	Human
AMOUNT	100 µl
CONCENTRATION	1000 µg/ml
STORAGE/SHELF LIFE	2 - 8° C / 1 year from date of receipt
PHYSICAL STATE	Liquid
BUFFER	Tris-citrate/phosphate buffer, pH 7 to 8 containing 0.09% Sodium Azide
ISOTYPE	IgG
ORIGIN	USA
PRODUCTION PROCEDURES	Antibody was affinity purified using an epitope specific to UBAP2L/NICE4 immobilized on solid support.

The epitope recognized by A300-533A maps to a region between residues 400 and 450 of human Ubiquitin Associated Protein 2-Like using the numbering given in entry AAH03170.1 (GeneID 9898). The epitope is also found in the shorter entry BAA09765.1. The more quickly migrating protein detected by using A300-533A (but not detected by A300-534A) is believed to be the shorter form of UBAP2L/NICE4.

Immunoglobulin concentration was determined by extinction coefficient: absorbance at 280 nm of 1.4 equals 1.0 mg of IgG.

APPLICATIONS Centrifuge tube to remove product from lid. Optimal working dilutions should be determined experimentally by the investigator. Prepare working dilution immediately before use.

Western Blot 1:10,000 - 1:25,000

Immunoprecipitation 2 - 10 µg/mg lysate

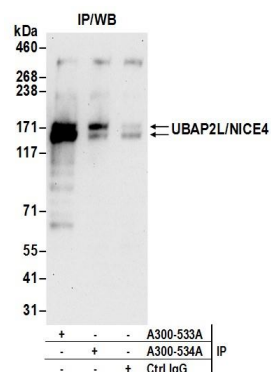
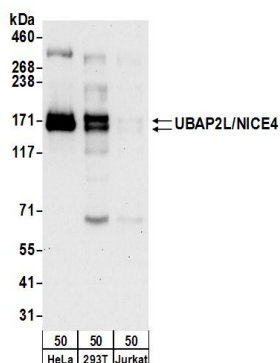
APPLICATION NOTES Western blot of immunoprecipitates performed using Normal Pig Serum (Cat. No. S100-020), Goat anti-Rabbit Light Chain HRP Conjugate (Cat. No. A120-113P) and 4-8% SDS-PAGE (link to IP-western blot protocol in Additional Info section below).

Western blot of lysates performed using standard western blot reagents and 4-8% SDS-PAGE.

ADDITIONAL INFO <https://www.bethyl.com/product/A300-533A>

Use the link above to view SDS, a current list of citations, and other product specific information. IP-western blot protocol: https://www.bethyl.com/content/protocol_IP_WB

This document certifies that this product has met all of the quality control standards defined by Bethyl Laboratories, Inc.
Eric McIntush, PhD | Chief Scientific Officer Date: June 21, 2019



Detection of human UBAP2L/NICE4 by western blot.
Samples: Whole cell lysate (50 µg) from HeLa, HEK293T, and Jurkat cells. *Antibodies:* Affinity purified rabbit anti-UBAP2L/NICE4 antibody A300-533A (lot A300-533A-2) used for WB at 0.04 µg/ml. *Detection:* Chemiluminescence with an exposure time of 30 seconds.

Detection of human UBAP2L/NICE4 by western blot of immunoprecipitates. *Samples:* Whole cell lysate (0.5 or 1.0 mg per IP reaction; 20% of IP loaded) from HeLa cells. *Antibodies:* Affinity purified rabbit anti-UBAP2L/NICE4 antibody A300-533A (lot A300-533A-2) used for IP at 6 µg per reaction. UBAP2L/NICE4 was also immunoprecipitated by rabbit anti-UBAP2L/NICE4 antibody A300-534A. For blotting immunoprecipitated UBAP2L/NICE4, A300-533A was used at 0.1 µg/ml. *Detection:* Chemiluminescence with an exposure time of 30 seconds.