

# REST Antibody

Rabbit Polyclonal

Antigen Affinity Purified

Catalog No. A300-539A

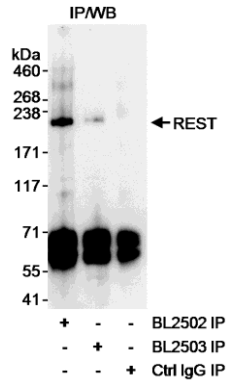
Lot No. A300-539A-1

Protein ID NP\_005603.2

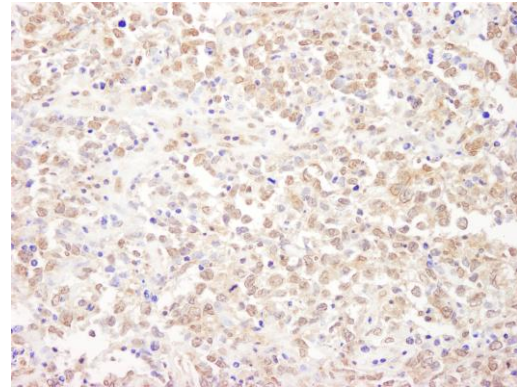
Gene ID 5978



<b>APPLICATIONS</b>	IP, IHC-P, IF								
<b>REACTIVITY TESTED</b>	Human								
<b>PRESUMED REACTIVITY</b>	Based on 100% sequence identity, this antibody is predicted to react with Orangutan, Gorilla and Northern white-cheeked gibbon.								
<b>ISOTYPE</b>	IgG								
<b>AMOUNT</b>	0.1 ml at 1 mg/ml								
<b>STORAGE/SHELF LIFE</b>	2 - 8° C / 1 year from date of receipt								
<b>PHYSICAL STATE</b>	Liquid								
<b>BUFFER</b>	Tris-citrate/phosphate buffer, pH 7 to 8 containing 0.09% Sodium Azide								
<b>ORIGIN</b>	USA								
<b>PRODUCTION PROCEDURES</b>	<p>Antibody was affinity purified using an epitope specific to REST immobilized on solid support.</p> <p>The epitope recognized by A300-539A maps to a region between residues 800 and 850 of human RE1-silencing transcription factor using the numbering given in entry NP_005603.2 (GeneID 5978).</p> <p>Immunoglobulin concentration was determined by extinction coefficient: absorbance at 280 nm of 1.4 equals 1.0 mg of IgG.</p>								
<b>APPLICATIONS</b>	<p>Centrifuge tube to remove product from lid. Optimal working dilutions should be determined experimentally by the investigator. Prepare working dilution immediately before use.</p> <table><tr><td>Western Blot</td><td>Not recommended. Use rabbit anti-REST antibody A300-540A.</td></tr><tr><td>Immunoprecipitation</td><td>2 to 5 µg/mg lysate</td></tr><tr><td>Immunohistochemistry</td><td>1:500 to 1:2,000. Epitope retrieval with citrate buffer pH6.0 is recommended for FFPE tissue sections.</td></tr><tr><td>Immunofluorescence</td><td>1:250 to 1:1,000.</td></tr></table>	Western Blot	Not recommended. Use rabbit anti-REST antibody A300-540A.	Immunoprecipitation	2 to 5 µg/mg lysate	Immunohistochemistry	1:500 to 1:2,000. Epitope retrieval with citrate buffer pH6.0 is recommended for FFPE tissue sections.	Immunofluorescence	1:250 to 1:1,000.
Western Blot	Not recommended. Use rabbit anti-REST antibody A300-540A.								
Immunoprecipitation	2 to 5 µg/mg lysate								
Immunohistochemistry	1:500 to 1:2,000. Epitope retrieval with citrate buffer pH6.0 is recommended for FFPE tissue sections.								
Immunofluorescence	1:250 to 1:1,000.								
<b>APPLICATION NOTES</b>	IHC validation was performed using Immunohistochemistry Accessory Kit (Cat. # IHC-101).								
<b>IHC HUMAN CONTROLS</b>	Breast Carcinoma, Metastatic Lymph Node, Ovarian Carcinoma								
<b>ADDITIONAL INFO</b>	<p><a href="http://www.bethyl.com/product/A300-539A">http://www.bethyl.com/product/A300-539A</a></p> <p>Use the link above to view SDS, a current list of citations, and other product specific information.</p>								



**Detection of Human REST by Western Blot of Immunoprecipitate.** *Samples:* Whole cell lysate (1 mg for IP, 1/4 of IP reaction loaded). *Antibodies:* Affinity purified rabbit anti-REST antibodies BL2502 (Cat. No. A300-539A) and BL2503 (Cat. No. A300-540A) used at 3  $\mu\text{g}/\text{mg}$  lysate for IP. Immunoprecipitated REST was blotted using BL2503 at 0.1  $\mu\text{g}/\text{ml}$ . REST was more efficiently immunoprecipitated by BL2502 than by BL2503. *Detection:* Chemiluminescence with an exposure time of 30 seconds (A and B).



**Detection of Human REST by Immunohistochemistry.** *Sample:* FFPE section of human metastatic lymph node. *Antibody:* Affinity purified rabbit anti-REST (Cat. No. A300-539A Lot1) used at a dilution of 1:1,000 (1 $\mu\text{g}/\text{ml}$ ). *Detection:* DAB