

# Matrin 3 Antibody

Rabbit Polyclonal

Antigen Affinity Purified

Protein ID NP\_061322.2

Catalog No. A300-591A

GeneID 9782

Lot No. A300-591A-1



<b>APPLICATIONS</b>	WB, IP, IHC, IHC-IF
<b>SPECIES REACTIVITY</b>	Human, Mouse
<b>AMOUNT</b>	100 µl
<b>CONCENTRATION</b>	200 µg/ml
<b>STORAGE/SHELF LIFE</b>	2 - 8° C / 1 year from date of receipt
<b>PHYSICAL STATE</b>	Liquid
<b>BUFFER</b>	Tris-buffered Saline containing 0.1% BSA and 0.09% Sodium Azide
<b>ISOTYPE</b>	IgG
<b>ORIGIN</b>	USA
<b>PRODUCTION PROCEDURES</b>	Antibody was affinity purified using an epitope specific to Matrin 3 immobilized on solid support.

The epitope recognized by A300-591A maps to a region between residue 800 and the C-terminus (residue 847) of human Matrin 3 using the numbering given in entry NP\_061322.2 (GeneID 9782).

Immunoglobulin concentration was determined by extinction coefficient: absorbance at 280 nm of 1.4 equals 1.0 mg of IgG.

**APPLICATIONS** Centrifuge tube to remove product from lid. Optimal working dilutions should be determined experimentally by the investigator. Prepare working dilution immediately before use.

Western Blot	1:5,000 – 1:15,000
Immunoprecipitation	1 – 4 µg/mg lysate
Immunohistochemistry	1:500 – 1:2,000. Epitope retrieval with citrate buffer pH 6.0 is recommended for FFPE tissue sections.
Immunofluorescence (IHC)	1:250 – 1:1,000

**APPLICATION NOTES** Western blot of immunoprecipitates performed using Normal Pig Serum (Cat. No. S100-020), Goat anti-Rabbit Light Chain HRP Conjugate (Cat. No. A120-113P) and 4-8% SDS-PAGE (link to IP-western blot protocol in Additional Info section below).

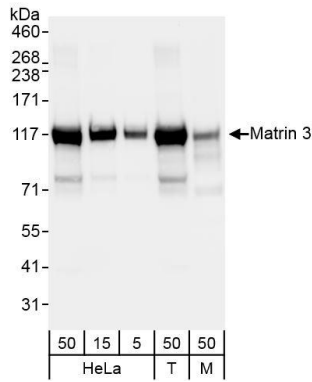
**IHC HUMAN CONTROLS** Western blot of lysates performed using standard western blot reagents and 4-8% SDS-PAGE. Breast Carcinoma, Colon Carcinoma, Laryngeal Squamous Cell Carcinoma, Non-Small Cell Lung Cancer, Ovarian Carcinoma, Small Cell Lung Cancer, Stomach Adenocarcinoma

**IHC MOUSE CONTROLS** Squamous Cell Carcinoma

**ADDITIONAL INFO** <https://www.bethyl.com/product/A300-591A>

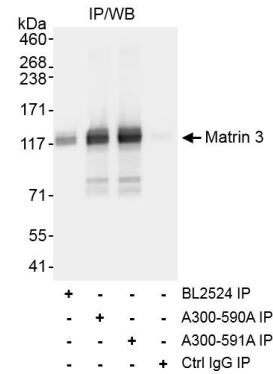
Use the link above to view SDS, a current list of citations, and other product specific information. IP-western blot protocol [https://www.bethyl.com/content/protocol\\_IP\\_WB](https://www.bethyl.com/content/protocol_IP_WB)

This document certifies that this product has met all of the quality control standards defined by Bethyl Laboratories, Inc.  
Eric McIntush, PhD | Chief Scientific Officer Date: October 16, 2019

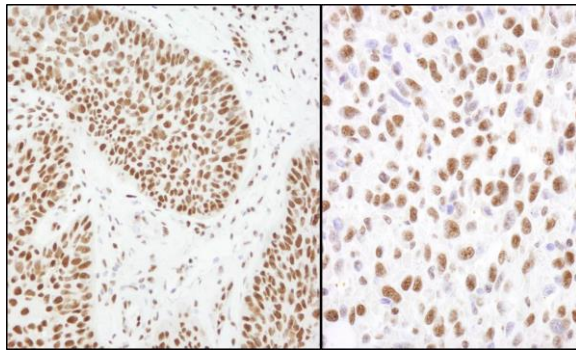


**Detection of human and mouse Matrin 3 by western blot.**

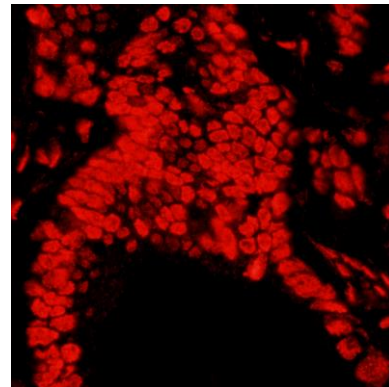
*Samples:* Whole cell lysate from HeLa (5, 15 and 50 µg), HEK293T (T, 50 µg) and mouse NIH 3T3 (M, 50 µg) cells. *Antibodies:* Affinity purified rabbit anti-Matrin 3 antibody A300-591A (lot A300-591A-1) used for WB at 0.04 µg/ml. *Detection:* Chemiluminescence with exposure time of 30 seconds.



**Detection of human Matrin 3 by western blot of immunoprecipitates.** *Samples:* Whole cell lysate (1 mg for IP, 1/4 of IP loaded) from HeLa cells. *Antibodies:* Affinity purified rabbit anti-Matrin 3 antibody A300-591A (lot A300-591A-1) used for IP at 3 µg/mg lysate. Matrin 3 was also immunoprecipitated using rabbit anti-Matrin 3 antibodies BL2524 and A300-591A. For blotting immunoprecipitated Matrin 3, A300-591A was used at 1 µg/ml. *Detection:* Chemiluminescence with exposure time of 3 seconds.



**Detection of human and mouse Matrin 3 by immunohistochemistry.** *Sample:* FFPE section of human laryngeal squamous cell carcinoma (left) and mouse squamous cell carcinoma (right). *Antibody:* Affinity purified rabbit anti-Matrin 3 (Cat. No. A300-591A lot 1) used at a dilution of 1:1,000 (0.2µg/ml). *Detection:* DAB



**Detection of human Matrin 3 by immunohistochemistry.** *Sample:* FFPE section of human stomach carcinoma. *Antibody:* Affinity purified rabbit anti-Matrin 3 (Cat. No. A300-591A lot 1) used at a dilution of 1:400 (0.5µg/ml). *Detection:* Red-fluorescent goat anti-rabbit IgG-heavy and light chain cross-adsorbed Antibody DyLight® 594 Conjugated used at a dilution of 1:100.