

# Sec23IP/MSTP053 Antibody

Rabbit Polyclonal

Antigen Affinity Purified

Protein ID NP\_009121.1

Catalog No. A300-594A

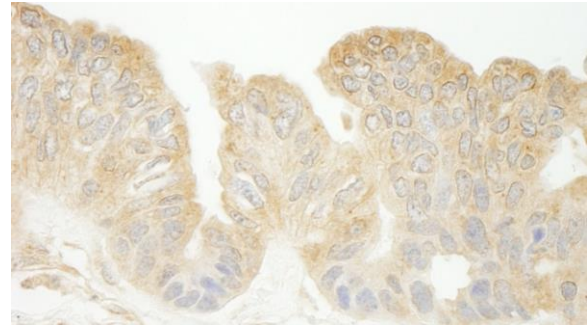
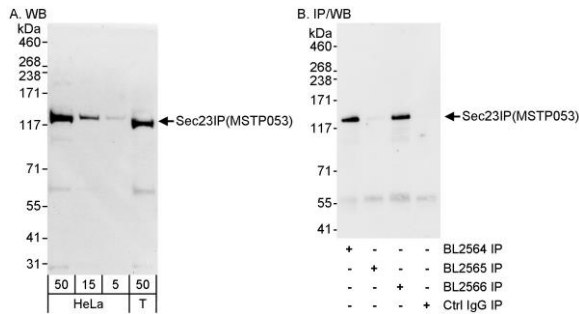
GeneID 11196

Lot No. A300-594A-1



<b>APPLICATIONS</b>	WB, IP, IHC						
<b>SPECIES REACTIVITY</b>	Human						
<b>PRESUMED REACTIVITY</b>	Based on 100% sequence identity, this antibody is predicted to react with Mouse						
<b>AMOUNT</b>	100 $\mu$ l						
<b>CONCENTRATION</b>	200 $\mu$ g/ml						
<b>STORAGE/SHELF LIFE</b>	2 - 8° C / 1 year from date of receipt						
<b>PHYSICAL STATE</b>	Liquid						
<b>BUFFER</b>	Tris-buffered Saline containing 0.1% BSA and 0.09% Sodium Azide						
<b>ISOTYPE</b>	IgG						
<b>ORIGIN</b>	USA						
<b>PRODUCTION PROCEDURES</b>	<p>Antibody was affinity purified using an epitope specific to Sec23IP/MSTP053) immobilized on solid support.</p> <p>The epitope recognized by A300-594A maps to a region between residue 950 and the C-terminus (residue 1000) of human Sec23-Interacting Protein using the numbering given in entry NP_009121.1 (GeneID 11196).</p> <p>Immunoglobulin concentration was determined by extinction coefficient: absorbance at 280 nm of 1.4 equals 1.0 mg of IgG.</p>						
<b>APPLICATIONS</b>	<p>Centrifuge tube to remove product from lid. Optimal working dilutions should be determined experimentally by the investigator. Prepare working dilution immediately before use.</p> <table><tr><td>Western Blot</td><td>1:2,500 - 1:10,000</td></tr><tr><td>Immunoprecipitation</td><td>1 - 4 <math>\mu</math>g/mg lysate</td></tr><tr><td>Immunohistochemistry</td><td>1:100 - 1:500. Epitope retrieval with Tris-EDTA pH 9.0 is recommended for FFPE tissue sections.</td></tr></table>	Western Blot	1:2,500 - 1:10,000	Immunoprecipitation	1 - 4 $\mu$ g/mg lysate	Immunohistochemistry	1:100 - 1:500. Epitope retrieval with Tris-EDTA pH 9.0 is recommended for FFPE tissue sections.
Western Blot	1:2,500 - 1:10,000						
Immunoprecipitation	1 - 4 $\mu$ g/mg lysate						
Immunohistochemistry	1:100 - 1:500. Epitope retrieval with Tris-EDTA pH 9.0 is recommended for FFPE tissue sections.						
<b>APPLICATION NOTES</b>	<p>Western blot of immunoprecipitates performed using Normal Pig Serum (Cat. No. S100-020), Goat anti-Rabbit Light Chain HRP Conjugate (Cat. No. A120-113P) and 4-8% SDS-PAGE (link to IP-western blot protocol in Additional Info section below).</p> <p>Western blot of lysates performed using standard western blot reagents and 4-8% SDS-PAGE.</p>						
<b>IHC HUMAN CONTROLS</b>	Breast Carcinoma, Ovarian Carcinoma						
<b>ADDITIONAL INFO</b>	<p><a href="https://www.bethyl.com/product/A300-594A">https://www.bethyl.com/product/A300-594A</a></p> <p>Use the link above to view SDS, a current list of citations, and other product specific information. IP-western blot protocol: <a href="https://www.bethyl.com/content/protocol_IP_WB">https://www.bethyl.com/content/protocol_IP_WB</a></p>						

This document certifies that this product has met all of the quality control standards defined by Bethyl Laboratories, Inc.  
Eric McIntush, PhD | Chief Scientific Officer Date: June 21, 2019



**Detection of human Sec23IP(MSTP053) by western blot and immunoprecipitation.** *Samples:* Whole cell lysate from HeLa (5, 15 and 50 µg for WB; 1 mg for IP, 20% of IP loaded) and HEK293T (50 µg for WB) cells. *Antibodies:* Affinity purified rabbit anti-Sec23IP(MSTP053) antibody BL2566 (Cat. No. A300-594A) used for WB at 0.04 µg/ml (A) and 1 µg/ml (B) and for IP at 3 µg/mg lysate. Sec23IP(MSTP053) was also immunoprecipitated using rabbit anti-Sec23IP(MSTP053) antibodies BL2564 (Cat. No. A300-592A) and BL2565 (Cat. No. A300-593A). *Detection:* Chemiluminescence with exposure times of 30 seconds (A) and 3 minutes (B).

**Detection of human Sec23IP(MSTP053) by immunohistochemistry.** *Sample:* FFPE section of human ovarian carcinoma. *Antibody:* Affinity purified rabbit anti-expndtw-6 Sec23IP(MSTP053) (Cat. No. A300-594A Lot1) used at a dilution of 1:200 (1 µg/ml). *Detection:* DAB