

CAP-D3 Antibody

Rabbit Polyclonal

Antigen Affinity Purified

Protein ID NP_056076.1

Catalog No. A300-604A-M

GeneID 23310

Lot No. A300-604A-M-4



APPLICATIONS	WB, IP
SPECIES REACTIVITY	Human
AMOUNT	100 µl (10 blots)
CONCENTRATION	40 µg/ml
STORAGE/SHELF LIFE	2 - 8° C / 1 year from date of receipt
PHYSICAL STATE	Liquid
BUFFER	Tris-buffered Saline containing 0.1% BSA and 0.09% Sodium Azide
ISOTYPE	IgG
ORIGIN	USA
PRODUCTION PROCEDURES	Antibody was affinity purified using an epitope specific to CAP-D3 immobilized on solid support.

The epitope recognized by A300-604A-M maps to a region between residue 1450 and the C-terminus (residue 1498) of human Chromosome-Associated Protein D3 using the numbering given in entry NP_056076.1 (GeneID 23310).

APPLICATIONS Centrifuge tube to remove product from lid. Optimal working dilutions should be determined experimentally by the investigator. Prepare working dilution immediately before use.

Western Blot 1:1000

Immunoprecipitation The antibody contained within A300-604A-M has been qualified for use in immunoprecipitation; however, we recommend using the alternative formulation of this antibody found as product A300-604A.

APPLICATION NOTES Western blot of immunoprecipitates performed using Normal Pig Serum (Cat. No. S100-020), Goat anti-Rabbit Light Chain HRP Conjugate (Cat. No. A120-113P) and 4-8% SDS-PAGE (link to IP-western blot protocol in Additional Info section below).

Western blot of lysates performed using standard western blot reagents and 4-8% SDS-PAGE.

ADDITIONAL INFO <https://www.bethyl.com/product/A300-604A-M>

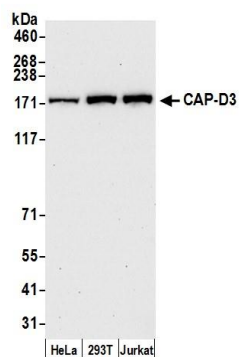
Use the link above to view SDS, a current list of citations, and other product specific information.

IP-western blot protocol https://www.bethyl.com/content/protocol_IP_WB

This document certifies that this product has met all of the quality control standards defined by Bethyl Laboratories, Inc.

Eric McIntush, PhD | Chief Scientific Officer

Date: September 18, 2019



Detection of human CAP-D3 by western blot. *Samples:* Whole cell lysate (50 μ g) from HeLa, 293T, and Jurkat cells prepared using NETN lysis buffer. *Antibody:* Affinity purified rabbit anti-CAP-D3 antibody A300-604A-M (lot A300-604A-M-4) used for WB at 1:1000. *Detection:* Chemiluminescence with an exposure time of 30 seconds.