

# SKIV2L2 Antibody

Rabbit Polyclonal

Antigen Affinity Purified Protein ID NP\_056175.2

Catalog No. A300-614A-T GeneID 23517

Lot No. A300-614A-T-4

---

<b>APPLICATIONS</b>	WB, IHC, ICC
<b>SPECIES REACTIVITY</b>	Human, Mouse
<b>AMOUNT</b>	10 µl
<b>CONCENTRATION</b>	200 µg/ml
<b>STORAGE/SHELF LIFE</b>	2 – 8°C / 1 year from date of receipt
<b>PHYSICAL STATE</b>	Liquid
<b>BUFFER</b>	Tris-buffered Saline containing 0.1% BSA and 0.09% Sodium Azide
<b>ISOTYPE</b>	IgG
<b>ORIGIN</b>	USA
<b>PRODUCTION PROCEDURES</b>	Antibody was affinity purified using an epitope specific to SKIV2L2 immobilized on solid support.

The epitope recognized by A300-614A-T maps to a region between residues 100 and 150 of human SuperKiller Viralicidic Activity 2-Like 2 using the numbering given in entry NP\_056175.2 (GeneID 23517).

**APPLICATIONS** Centrifuge tube to remove product from lid. Optimal working dilutions should be determined experimentally by the investigator. Prepare working dilution immediately before use.

Western Blot 1:2,000 – 1:10,000

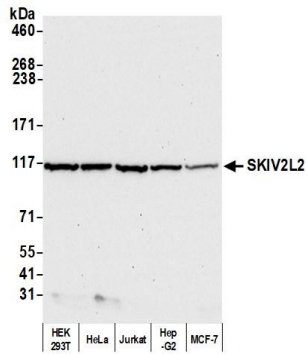
Immunohistochemistry 1:100 – 1:500. Epitope retrieval with Tris-EDTA pH9.0 is recommended for FFPE tissue sections.

Immunocytochemistry 1:100 – 1:500. Epitope retrieval with Tris-EDTA pH 9.0 is recommended for FFPE cell sections.

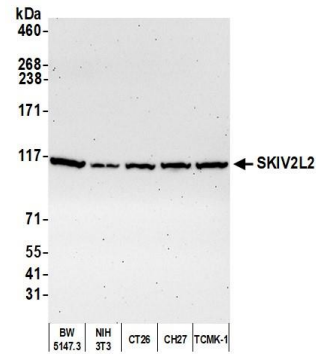
**ADDITIONAL INFO** <https://www.fortislife.com/p/A300-614A-T>

Use the link above to view SDS, a current list of citations, and other product specific information.

This document certifies that this product has met all of the quality control standards defined by Bethyl Laboratories, Inc.  
Michael Spencer, PhD Date: August 8, 2022



**Detection of human SKIV2L2 by western blot.** *Samples:* Whole cell lysate (50 µg) from HEK293T, HeLa, Jurkat, Hep-G2, and MCF-7 cells prepared using NETN lysis buffer. *Antibody:* Affinity purified rabbit anti-SKIV2L2 antibody A300-614A-T (lot A300-614A-T-4) used for WB at 1:1,000. *Detection:* Chemiluminescence with an exposure time of 30 seconds.



**Detection of mouse SKIV2L2 by western blot.** *Samples:* Whole cell lysate (50 µg) from BW5147.3, NIH 3T3, CT26, CH27, and TCMK-1 cells prepared using NETN lysis buffer. *Antibody:* Affinity purified rabbit anti-SKIV2L2 antibody A300-614A-T (lot A300-614A-T-4) used for WB at 1:1,000. *Detection:* Chemiluminescence with an exposure time of 75 seconds.