

# DDX21 Antibody

Rabbit Polyclonal

Antigen Affinity Purified

Protein ID NP\_004719.2

Catalog No. A300-629A

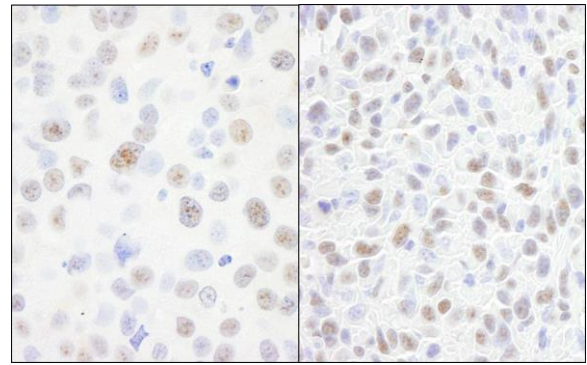
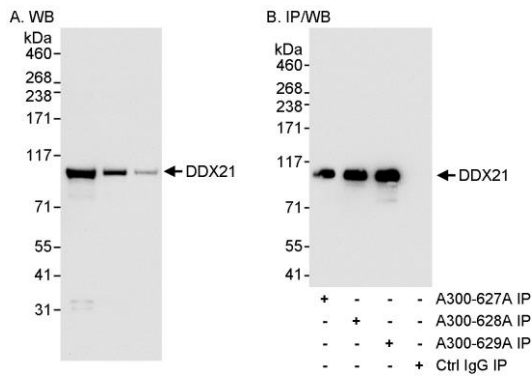
GeneID 9188

Lot No. A300-629A-1



<b>APPLICATIONS</b>	WB, IP, IHC-P
<b>SPECIES REACTIVITY</b>	Human, Mouse
<b>PRESUMED REACTIVITY</b>	Based on 100% sequence identity, this antibody is predicted to react with Rat
<b>ISOTYPE</b>	IgG
<b>AMOUNT</b>	100 µl at 0.2 mg/ml
<b>STORAGE/SHELF LIFE</b>	2 - 8° C / 1 year from date of receipt
<b>PHYSICAL STATE</b>	Liquid
<b>BUFFER</b>	Tris-buffered Saline containing 0.1% BSA and 0.09% Sodium Azide
<b>ORIGIN</b>	USA
<b>PRODUCTION PROCEDURES</b>	Antibody was affinity purified using an epitope specific to DDX21 immobilized on solid support.  The epitope recognized by A300-629A maps to a region between residue 725 and the C-terminus (residue 783) of human DEAD/H (Asp-Glu-Ala-Asp/His) Box Polypeptide 21 using the numbering given in entry NP_004719.2 (GeneID 9188).  Immunoglobulin concentration was determined by extinction coefficient: absorbance at 280 nm of 1.4 equals 1.0 mg of IgG.
<b>APPLICATIONS</b>	Centrifuge tube to remove product from lid. Optimal working dilutions should be determined experimentally by the investigator. Prepare working dilution immediately before use.  Western Blot 1:2,000 - 1:10,000  Immunoprecipitation 1 to 4 µg/mg of lysate  Immunohistochemistry 1:100 to 1:500. Epitope retrieval with citrate buffer pH6.0 is recommended for FFPE tissue sections.
<b>APPLICATION NOTES</b>	Western blot of immunoprecipitates performed using ReliaBLOT® Reagents (Cat. No. WB120) and 4-8% SDS-PAGE. Western blot of lysates performed using standard western blot reagents and 4-8% SDS-PAGE.
<b>IHC HUMAN CONTROLS</b>	Breast Carcinoma, Laryngeal Squamous Cell Carcinoma, Metastatic Lymph Node, Ovarian Carcinoma
<b>IHC MOUSE CONTROLS</b>	Squamous Cell Carcinoma
<b>ADDITIONAL INFO</b>	<a href="http://www.bethyl.com/product/A300-629A">http://www.bethyl.com/product/A300-629A</a>  Use the link above to view SDS, a current list of citations, and other product specific information.

# DDX21 Antibody A300-629A



**Detection of Human DDX21 by Western Blot and Immunoprecipitation.** *Samples:* Whole cell lysate (5, 15 and 50  $\mu$ g for WB; 1 mg for IP, 20% of IP loaded) from HeLa cells. *Antibodies:* Affinity purified rabbit anti-DDX21 antibody A300-629A used for WB at 0.04  $\mu$ g/ml (A) and 1  $\mu$ g/ml (B) and used for IP at 3  $\mu$ g/mg lysate. DDX21 was also immunoprecipitated using rabbit anti-DDX21 antibodies A300-627A and A300-628A at 3  $\mu$ g/mg lysate. *Detection:* Chemiluminescence with exposure times of 10 seconds (A) and 3 seconds (B).

**Detection of Human and Mouse DDX21 by Immunohistochemistry.** *Sample:* FFPE section of human breast carcinoma (left) and mouse squamous cell carcinoma (right). *Antibody:* Affinity purified rabbit anti-DDX21 (Cat. No. A300-629A Lot1) used at a dilution of 1:200 (1 $\mu$ g/ml). *Detection:* DAB.