

GAPDH Antibody

Rabbit Polyclonal

Antigen Affinity Purified Protein ID NP_002037.2

Catalog No. A300-639A GeneID 2597

Lot No. A300-639A-6

APPLICATIONS	WB, IHC
SPECIES REACTIVITY	Human, Mouse
PRESUMED REACTIVITY	Based on 100% sequence identity, this antibody is predicted to react with Rat, Zebrafish, Chicken, Sheep, Bovine, Rabbit, Guinea pig_10141, Pig, Golden hamster, Cat and Orangutan
AMOUNT	100 µl
CONCENTRATION	200 µg/ml
STORAGE/SHELF LIFE	2 – 8°C / 1 year from date of receipt
PHYSICAL STATE	Liquid
BUFFER	Tris-buffered Saline containing 0.1% BSA and 0.09% Sodium Azide
ISOTYPE	IgG
ORIGIN	USA
PRODUCTION PROCEDURES	Antibody was affinity purified using an epitope specific to GAPDH immobilized on solid support.

The epitope recognized by A300-639A maps to a region between residues 150 and 200 of human Glyceraldehyde-3-Phosphate Dehydrogenase using the numbering given in entry NP_002037.2 (GeneID 2597).

Immunoglobulin concentration was determined by extinction coefficient: absorbance at 280 nm of 1.4 equals 1.0 mg of IgG.

APPLICATIONS Centrifuge tube to remove product from lid. Optimal working dilutions should be determined experimentally by the investigator. Prepare working dilution immediately before use.

Western Blot 1:2,000 – 1:10,000

Immunoprecipitation Not recommended

Immunohistochemistry 1:500 to 1:2,000. Epitope retrieval with citrate buffer pH6.0 is recommended for FFPE tissue sections.

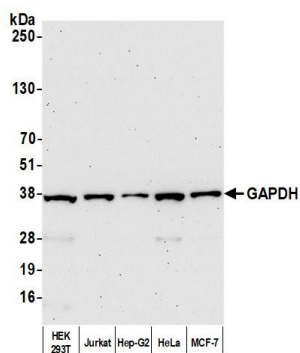
IHC HUMAN CONTROLS Breast Carcinoma, Colon Carcinoma, Prostate Carcinoma, Skin Basal Cell Carcinoma

IHC MOUSE CONTROLS Plasmacytoma, Small Intestine, Squamous Cell Carcinoma

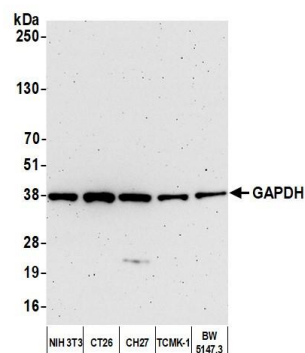
ADDITIONAL INFO <https://www.bethyl.com/product/A300-639A>

Use the link above to view SDS, a current list of citations, and other product specific information.

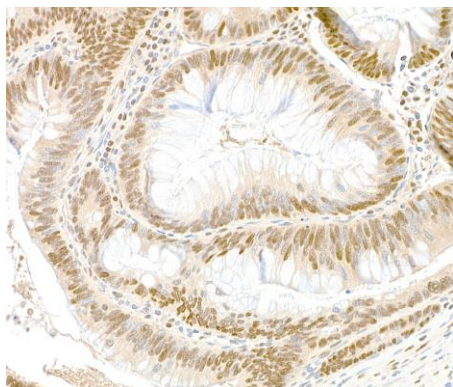
This document certifies that this product has met all of the quality control standards defined by Bethyl Laboratories, Inc.
Michael Spencer, PhD Date: November 4, 2021



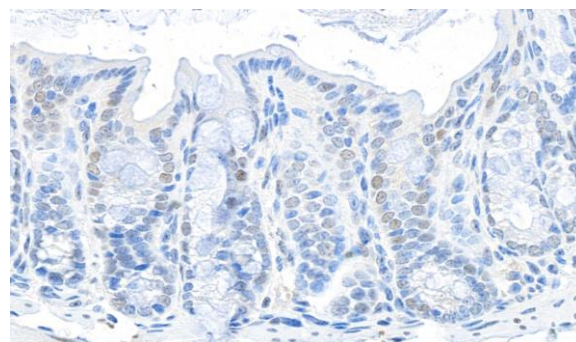
Detection of human GAPDH by western blot. *Samples:* Whole cell lysate (10 μ g) from HEK293T, Jurkat, Hep-G2, HeLa, and MCF-7 cells prepared using NETN lysis buffer. *Antibody:* Affinity purified rabbit anti-GAPDH antibody (A300-639A lot 6) used for WB at 0.04 μ g/ml. *Detection:* Chemiluminescence with an exposure time of 75 seconds.



Detection of mouse GAPDH by western blot. *Samples:* Whole cell lysate (10 μ g) from NIH 3T3, CT26, CH27, TCMK-1, and BW5147.3 cells prepared using NETN lysis buffer. *Antibody:* Affinity purified rabbit anti-GAPDH antibody (A300-639A lot 6) used for WB at 0.04 μ g/ml. *Detection:* Chemiluminescence with an exposure time of 3 minutes.



Detection of human GAPDH by immunohistochemistry. *Sample:* FFPE section of human colon carcinoma. *Antibody:* Affinity purified rabbit anti-GAPDH (A300-639A Lot 6) used at a dilution of 1:1,000 (0.2 μ g/ml). *Detection:* DAB



Detection of mouse GAPDH by immunohistochemistry. *Sample:* FFPE section of mouse intestine. *Antibody:* Affinity purified rabbit anti-GAPDH (A300-639A Lot 6) used at a dilution of 1:1,000 (0.2 μ g/ml). *Detection:* DAB