

# GAPDH Antibody

Rabbit Polyclonal

Antigen Affinity Purified

Protein ID NP\_002037.2

Catalog No. A300-640A

GeneID 2597

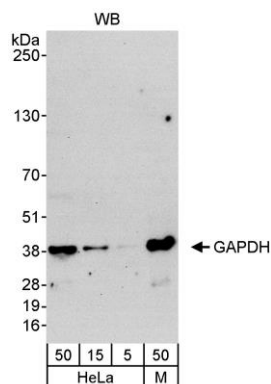
Lot No. A300-640A-1



|                              |   |
|------------------------------|---|
| <b>APPLICATIONS</b>          | WB  |
| <b>SPECIES REACTIVITY</b>    | Human, Mouse  |
| <b>PRESUMED REACTIVITY</b>   | Based on 100% sequence identity, this antibody is predicted to react with Rat, Zebrafish, Chicken, Turkey, Sheep, Bovine, Dog, Rabbit, Guinea pig_10141, Pig, Golden hamster, Cat and Orangutan   |
| <b>AMOUNT</b>                | 100 $\mu$ l   |
| <b>CONCENTRATION</b>         | 200 $\mu$ g/ml  |
| <b>STORAGE/SHELF LIFE</b>    | 2 - 8° C / 1 year from date of receipt  |
| <b>PHYSICAL STATE</b>        | Liquid  |
| <b>BUFFER</b>                | Tris-buffered Saline containing 0.1% BSA and 0.09% Sodium Azide   |
| <b>ISOTYPE</b>               | IgG   |
| <b>ORIGIN</b>                | USA   |
| <b>PRODUCTION PROCEDURES</b> | <p>Antibody was affinity purified using an epitope specific to GAPDH immobilized on solid support.</p> <p>The epitope recognized by A300-640A maps to a region between residues 200 and 250 of human Glyceraldehyde-3-Phosphate Dehydrogenase using the numbering given in entry NP_002037.2 (GeneID 2597).</p> <p>Immunoglobulin concentration was determined by extinction coefficient: absorbance at 280 nm of 1.4 equals 1.0 mg of IgG.</p> |
| <b>APPLICATIONS</b>          | <p>Centrifuge tube to remove product from lid. Optimal working dilutions should be determined experimentally by the investigator. Prepare working dilution immediately before use.</p> <p>Western Blot                              1:2,000 - 1:10,000</p> <p>Immunoprecipitation                      Not recommended</p>  |
| <b>APPLICATION NOTES</b>     | Western blot of lysates performed using standard western blot reagents and 4-20% SDS-PAGE.  |
| <b>ADDITIONAL INFO</b>       | <p><a href="https://www.bethyl.com/product/A300-640A">https://www.bethyl.com/product/A300-640A</a></p> <p>Use the link above to view SDS, a current list of citations, and other product specific information.</p>  |

This document certifies that this product has met all of the quality control standards defined by Bethyl Laboratories, Inc.  
Eric McIntush, PhD | Chief Scientific Officer

Date: June 21, 2019

**Detection of human and mouse GAPDH by western blot.**

*Samples:* Whole cell lysate from HeLa (5, 15 and 50 µg) and mouse NIH 3T3 (M; 50 µg). *Antibody:* Affinity purified rabbit anti-GAPDH antibody (Cat. No. A300-640A) used at 0.04 µg/ml. *Detection:* Chemiluminescence with an exposure time of 30 seconds.