

GAPDH Antibody

Rabbit Polyclonal

Antigen Affinity Purified Protein ID NP_002037.2

Catalog No. A300-641A-T GenelD 2597

Lot No. A300-641A-T-3

APPLICATIONS	WB, IHC
SPECIES REACTIVITY	Human, Mouse
PRESUMED REACTIVITY	Based on 100% sequence identity, this antibody is predicted to react with Rat, Chicken, Turkey, Guinea pig_10141 and Pig
AMOUNT	10 µl
CONCENTRATION	200 µg/ml
STORAGE/SHELF LIFE	2 – 8°C / 1 year from date of receipt
PHYSICAL STATE	Liquid
BUFFER	Tris–buffered Saline containing 0.1% BSA and 0.09% Sodium Azide
ISOTYPE	IgG
ORIGIN	USA
PRODUCTION PROCEDURES	Antibody was affinity purified using an epitope specific to GAPDH immobilized on solid support.

The epitope recognized by A300-641A-T maps to a region between residues 250 and 300 of human Glyceraldehyde-3-Phosphate Dehydrogenase using the numbering given in entry NP_002037.2 (GenelD 2597).

APPLICATIONS Centrifuge tube to remove product from lid. Optimal working dilutions should be determined experimentally by the investigator. Prepare working dilution immediately before use.

Western Blot 1:10,000 – 1:25,000

Immunoprecipitation Not recommended

Immunohistochemistry 1:100 – 1:500. Epitope retrieval with citrate buffer pH 6.0 is recommended for FFPE tissue sections.

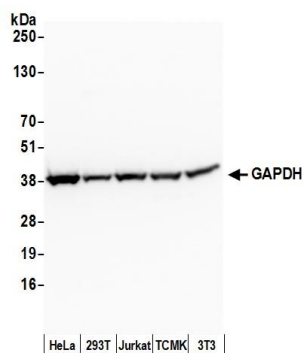
ADDITIONAL INFO <https://www.bethyl.com/product/A300-641A-T>

Use the link above to view SDS, a current list of citations, and other product specific information.

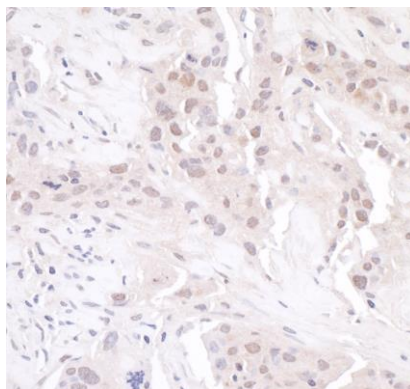
This document certifies that this product has met all of the quality control standards defined by Bethyl Laboratories, Inc.

Michael Spencer, PhD

Date: June 6, 2022

**Detection of human and mouse GAPDH by western blot.**

Samples: Whole cell lysate (50 μ g) from HeLa, HEK293T, Jurkat, mouse TCMK-1, and mouse NIH 3T3 cells prepared using NETN lysis buffer. *Antibody:* Affinity purified rabbit anti-GAPDH antibody A300-641A (lot A300-641A-3) used for WB at 0.1 μ g/ml. *Detection:* Chemiluminescence with an exposure time of 30 seconds.

**Detection of human GAPDH by immunohistochemistry.**

Sample: FFPE section of human breast carcinoma.
Antibody: Affinity purified rabbit anti-GAPDH (Cat. No. A300-641A Lot3) used at a dilution of 1:200 (1 μ g/ml).
Detection: DAB