

# Tip41 Antibody

Rabbit Polyclonal

Antigen Affinity Purified Protein ID NP\_690866.1

Catalog No. A300-662A-T GenelD 261726

Lot No. A300-662A-T-1

---

<b>APPLICATIONS</b>	WB
<b>SPECIES REACTIVITY</b>	Human, Mouse
<b>PRESUMED REACTIVITY</b>	Based on 100% sequence identity, this antibody is predicted to react with Rat
<b>AMOUNT</b>	10 µl
<b>CONCENTRATION</b>	200 µg/ml
<b>STORAGE/SHELF LIFE</b>	2 - 8°C / 1 year from date of receipt
<b>PHYSICAL STATE</b>	Liquid
<b>BUFFER</b>	Tris-buffered Saline containing 0.1% BSA and 0.09% Sodium Azide
<b>ISOTYPE</b>	IgG
<b>ORIGIN</b>	USA
<b>PRODUCTION PROCEDURES</b>	Antibody was affinity purified using an epitope specific to Tip41 immobilized on solid support.

The epitope recognized by A300-662A-T maps to a region between residues 200 and 250 of human TIP41, TOR-signaling Pathway Regulator-like using the numbering given in entry NP\_690866.1 (GenelD 261726).

**APPLICATIONS** Centrifuge tube to remove product from lid. Optimal working dilutions should be determined experimentally by the investigator. Prepare working dilution immediately before use.

Western Blot 1:2,000 - 1:10,000

Immunoprecipitation Not recommended. A300-662A is much less efficient than rabbit anti-Tip41 antibody A300-663A at immunoprecipitation of Tip41.

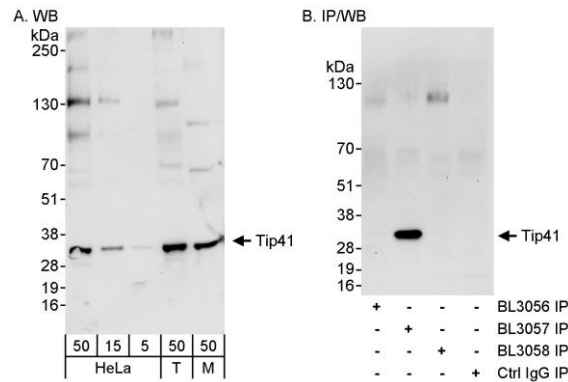
**ADDITIONAL INFO** <https://www.bethyl.com/product/A300-662A-T>

Use the link above to view SDS, a current list of citations, and other product specific information.

This document certifies that this product has met all of the quality control standards defined by Bethyl Laboratories, Inc.

Michael Spencer, PhD

Date: June 6, 2022



**Detection of human and mouse Tip41 by western blot (h & m) and immunoprecipitation (h).** *Samples:* Whole cell lysate from HeLa (5, 15 and 50 µg for WB; 1 mg for IP; 20% of IP loaded), HEK293T (T; 50 µg) and mouse NIH 3T3 (M; 50 µg) cells. *Antibodies:* Affinity purified rabbit anti-Tip41 antibody BL3056 (Cat. No. A300-662A) used for WB at 0.04 µg/ml (A) and 1 µg/ml (B) and used for IP at 3 µg/mg lysate. Tip41 was successfully immunoprecipitated by rabbit anti-Tip41 antibody BL3057 (Cat. No. A300-663A) but not by BL3058. *Detection:* Chemiluminescence with exposure times of 30 seconds (A and B).