

MAML1 Antibody

Rabbit Polyclonal

Antigen Affinity Purified

Protein ID NP_055572.1

Catalog No. A300-672A

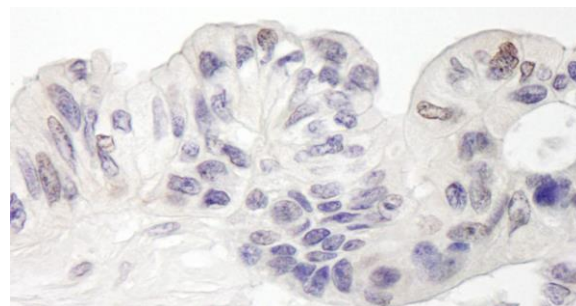
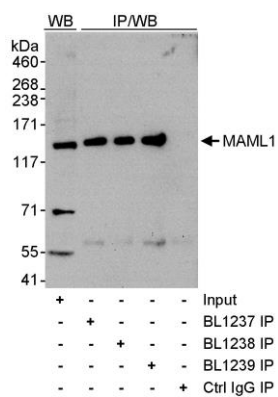
GeneID 9794

Lot No. A300-672A-1



APPLICATIONS	WB, IP, IHC						
SPECIES REACTIVITY	Human						
AMOUNT	100 µl						
CONCENTRATION	1000 µg/ml						
STORAGE/SHELF LIFE	2 - 8° C / 1 year from date of receipt						
PHYSICAL STATE	Liquid						
BUFFER	Tris-citrate/phosphate buffer, pH 7 to 8 containing 0.09% Sodium Azide						
ISOTYPE	IgG						
ORIGIN	USA						
PRODUCTION PROCEDURES	<p>Antibody was affinity purified using an epitope specific to MAML1 immobilized on solid support.</p> <p>The epitope recognized by A300-672A maps to a region between residue 75 and 125 of human Mastermind-like 1 using the numbering given in entry NP_055572.1 (GeneID 9794).</p> <p>Immunoglobulin concentration was determined by extinction coefficient: absorbance at 280 nm of 1.4 equals 1.0 mg of IgG.</p>						
APPLICATIONS	<p>Centrifuge tube to remove product from lid. Optimal working dilutions should be determined experimentally by the investigator. Prepare working dilution immediately before use.</p> <table><tr><td>Western Blot</td><td>1:1,000 - 1:10,000</td></tr><tr><td>Immunoprecipitation</td><td>1 - 4 µg/mg lysate</td></tr><tr><td>Immunohistochemistry</td><td>1:500 - 1:2,000. Epitope retrieval with Tris-EDTA pH 9.0 is recommended for FFPE tissue sections.</td></tr></table>	Western Blot	1:1,000 - 1:10,000	Immunoprecipitation	1 - 4 µg/mg lysate	Immunohistochemistry	1:500 - 1:2,000. Epitope retrieval with Tris-EDTA pH 9.0 is recommended for FFPE tissue sections.
Western Blot	1:1,000 - 1:10,000						
Immunoprecipitation	1 - 4 µg/mg lysate						
Immunohistochemistry	1:500 - 1:2,000. Epitope retrieval with Tris-EDTA pH 9.0 is recommended for FFPE tissue sections.						
APPLICATION NOTES	<p>Western blot of immunoprecipitates performed using Normal Pig Serum (Cat. No. S100-020), Goat anti-Rabbit Light Chain HRP Conjugate (Cat. No. A120-113P) and 4-8% SDS-PAGE (link to IP-western blot protocol in Additional Info section below).</p> <p>Western blot of lysates performed using standard western blot reagents and 4-8% SDS-PAGE.</p>						
IHC HUMAN CONTROLS	Breast Carcinoma, Ovarian Carcinoma						
ADDITIONAL INFO	<p>https://www.bethyl.com/product/A300-672A</p> <p>Use the link above to view SDS, a current list of citations, and other product specific information.</p> <p>IP-western blot protocol: https://www.bethyl.com/content/protocol_IP_WB</p>						

This document certifies that this product has met all of the quality control standards defined by Bethyl Laboratories, Inc.
Eric McIntush, PhD | Chief Scientific Officer Date: June 21, 2019



Detection of human MAML1 by western blot and immunoprecipitation. *Samples:* Whole cell lysate (50 μ g for Input; 1 mg for IP, 20% of IP loaded) from HeLa cells. *Antibodies:* Affinity purified rabbit anti-MAML1 antibody BL1238 (Cat. No. A300-672A) used for WB at 1 μ g/ml and for IP at 3 μ g/mg lysate. MAML1 was also immunoprecipitated by rabbit anti-MAML1 antibodies BL1237 (Cat. No. A300-671A) and BL1239 (Cat. No. A300-673A) using 3 μ g/mg lysate. *Detection:* Chemiluminescence with an exposure time of 30 seconds.

Detection of human MAML1 by immunohistochemistry. *Sample:* FFPE section of human ovarian carcinoma. *Antibody:* Affinity purified rabbit anti-MAML1 (Cat. No. A300-672A Lot1) used at a dilution of 1:1,000 (1 μ g/ml). *Detection:* DAB