

# MAML1 Antibody

Rabbit Polyclonal

Antigen Affinity Purified

Protein ID NP\_055572.1

Catalog No. A300-673A-T

GeneID 9794

Lot No. A300-673A-T-1

---

<b>APPLICATIONS</b>	WB, IP, IHC
<b>SPECIES REACTIVITY</b>	Human
<b>PRESUMED REACTIVITY</b>	Based on 100% sequence identity, this antibody is predicted to react with Mouse
<b>AMOUNT</b>	10 µl
<b>CONCENTRATION</b>	200 µg/ml
<b>STORAGE/SHELF LIFE</b>	2 – 8°C / 1 year from date of receipt
<b>PHYSICAL STATE</b>	Liquid
<b>BUFFER</b>	Tris-buffered Saline containing 0.1% BSA and 0.09% Sodium Azide
<b>ISOTYPE</b>	IgG
<b>ORIGIN</b>	USA
<b>PRODUCTION PROCEDURES</b>	Antibody was affinity purified using an epitope specific to MAML1 immobilized on solid support.

The epitope recognized by A300-673A-T maps to a region between residue 1000 and the C-terminus (residue 1042) of human Mastermind-like 1 using the numbering given in entry NP\_055572.1 (GeneID 9794).

**APPLICATIONS** Centrifuge tube to remove product from lid. Optimal working dilutions should be determined experimentally by the investigator. Prepare working dilution immediately before use.

Western Blot 1:2,000 – 1:10,000

Immunoprecipitation 1 – 4 µg/mg lysate

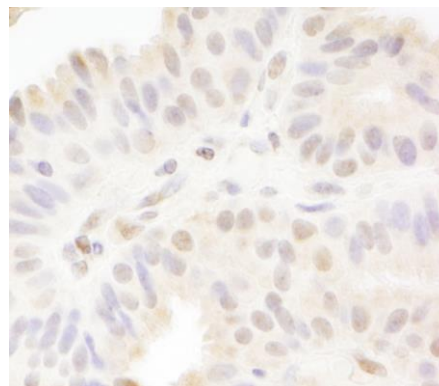
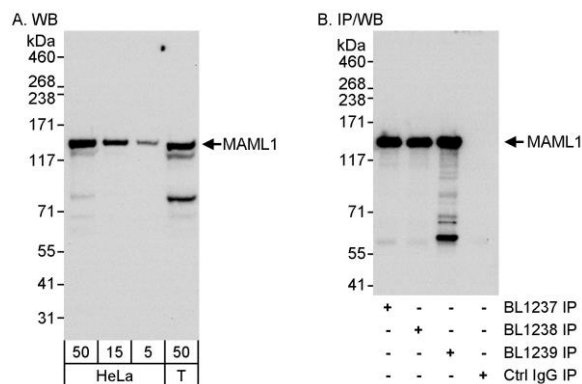
Immunohistochemistry 1:200 – 1:1,000. Epitope retrieval with Tris-EDTA pH 9.0 is recommended for FFPE tissue sections.

**ADDITIONAL INFO** <https://www.bethyl.com/product/A300-673A-T>

Use the link above to view SDS, a current list of citations, and other product specific information.

IP-western blot protocol: [https://www.bethyl.com/content/protocol\\_IP\\_WB](https://www.bethyl.com/content/protocol_IP_WB)

This document certifies that this product has met all of the quality control standards defined by Bethyl Laboratories, Inc.  
Michael Spencer, PhD Date: June 6, 2022



**Detection of human MAML1 by western blot and immunoprecipitation.** *Samples:* Whole cell lysate from HeLa (5, 15 and 50  $\mu$ g for WB; 1 mg for IP, 20% of IP loaded) and HEK293T (T; 50  $\mu$ g) cells. *Antibodies:* Affinity purified rabbit anti-MAML1 antibody BL1239 (Cat. No. A300-673A) used for WB at 0.04  $\mu$ g/ml (A) and 1  $\mu$ g/ml (B) and for IP at 3  $\mu$ g/mg lysate. MAML1 was also immunoprecipitated by rabbit anti-MAML1 antibodies BL1237 (Cat. No. A300-671A) and BL1238 (Cat. No. A300-672A) using 3  $\mu$ g/mg lysate. *Detection:* Chemiluminescence with an exposure time of 30 seconds (A and B).

**Detection of human MAML1 by immunohistochemistry.** *Sample:* FFPE section of human breast carcinoma. *Antibody:* Affinity purified rabbit anti-MAML1 (Cat. No. A300-673A Lot1) used at a dilution of 1:200 (1  $\mu$ g/ml). *Detection:* DAB