

HDAC2 Antibody

Rabbit Polyclonal

Antigen Affinity Purified Protein ID NP_001518.1

Catalog No. A300-705A-T GenelD 3066

Lot No. A300-705A-T-1

APPLICATIONS	WB, IP, IHC, ChIP-Seq
SPECIES REACTIVITY	Human, Mouse
AMOUNT	10 µl
CONCENTRATION	200 µg/ml
STORAGE/SHELF LIFE	2 – 8°C / 1 year from date of receipt
PHYSICAL STATE	Liquid
BUFFER	Tris-buffered Saline containing 0.1% BSA and 0.09% Sodium Azide
ISOTYPE	IgG
ORIGIN	USA
PRODUCTION PROCEDURES	Antibody was affinity purified using an epitope specific to HDAC2 immobilized on solid support.

The epitope recognized by A300-705A-T maps to a region between residue 425 and the C-terminus (residue 488) of human Histone Deacetylase 2 using the numbering given in entry NP_001518.1 (GenelD 3066).

APPLICATIONS Centrifuge tube to remove product from lid. Optimal working dilutions should be determined experimentally by the investigator. Prepare working dilution immediately before use.

Western Blot 1:2,000 – 1:10,000

Immunoprecipitation 2 – 5 µg/mg lysate

Immunohistochemistry 1:200 – 1:1,000. Epitope retrieval with citrate buffer pH 6.0 is recommended for FFPE tissue sections.

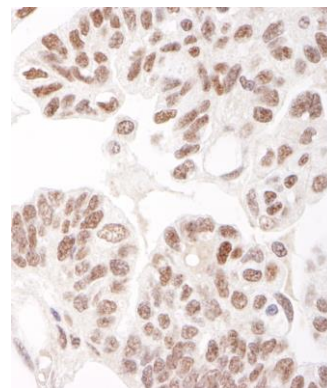
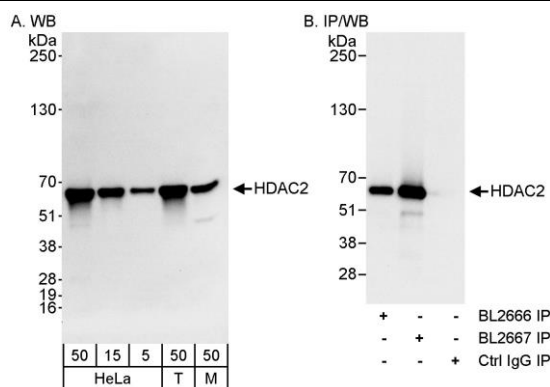
ChIP-Seq 10 µg as per Ram O et al., Cell. 2011 Dec 23;147(7):1628–39. Previous lots of this antibody have performed in this application.

ADDITIONAL INFO <https://www.bethyl.com/product/A300-705A-T>

Use the link above to view SDS, a current list of citations, and other product specific information.

IP-western blot protocol: https://www.bethyl.com/content/protocol_IP_WB

This document certifies that this product has met all of the quality control standards defined by Bethyl Laboratories, Inc.
Michael Spencer, PhD Date: June 6, 2022



Detection of human and mouse HDAC2 by western blot (h&m) and immunoprecipitation (h). *Samples:* Whole cell lysate from HeLa (5, 15 and 50 µg for WB; 1 mg for IP, 20% of IP loaded), HEK293T (T; 50 µg), and mouse NIH 3T3 (M; 50 µg) cells. *Antibodies:* Affinity purified rabbit anti-HDAC2 antibody BL2667 (Cat. No. A300-705A) used for WB at 0.04 µg/ml (A) and 1 µg/ml (B) and used for IP at 3 µg/mg lysate (B). HDAC2 was also immunoprecipitated using rabbit anti-HDAC2 antibody BL2666 (Cat. No. A300-704A) at 3 µg/mg lysate. *Detection:* Chemiluminescence with exposure times of 30 seconds (A) and 3 seconds (B).

Detection of human HDAC2 by immunohistochemistry. *Sample:* FFPE section of human ovarian carcinoma. *Antibody:* Affinity purified rabbit anti-HDAC2 (Cat. No. A300-705A Lot1) used at a dilution of 1:200 (1 µg/ml). *Detection:* DAB