

# HDAC1 Antibody

Rabbit Polyclonal

Antigen Affinity Purified Protein ID NP\_004955.2

Catalog No. A300-713A-M GeneID 3065

Lot No. A300-713A-M-1



<b>APPLICATIONS</b>	WB, IP, IHC
<b>SPECIES REACTIVITY</b>	Human, Mouse
<b>PRESUMED REACTIVITY</b>	Based on 100% sequence identity, this antibody is predicted to react with Bovine and Orangutan
<b>AMOUNT</b>	100 µl (10 blots)
<b>CONCENTRATION</b>	40 µg/ml
<b>STORAGE/SHELF LIFE</b>	2 - 8° C / 1 year from date of receipt
<b>PHYSICAL STATE</b>	Liquid
<b>BUFFER</b>	Tris-buffered Saline containing 0.1% BSA and 0.09% Sodium Azide
<b>ISOTYPE</b>	IgG
<b>ORIGIN</b>	USA
<b>PRODUCTION PROCEDURES</b>	Antibody was affinity purified using an epitope specific to HDAC1 immobilized on solid support.

The epitope recognized by A300-713A-M maps to region between residue 425 and the C-terminus (residue 482) of human Histone Deacetylase 1 using the numbering given in entry NP\_004955.2 (GeneID 3065).

**APPLICATIONS** Centrifuge tube to remove product from lid. Optimal working dilutions should be determined experimentally by the investigator. Prepare working dilution immediately before use.

Western Blot 1:1000

Immunoprecipitation The antibody contained within A300-713A-M has been qualified for use in immunoprecipitation; however, we recommend using the alternative formulation of this antibody found as product A300-713A.

Immunohistochemistry 1:40 - 1:200. Epitope retrieval with citrate buffer pH 6.0 is recommended for FFPE tissue sections.

**APPLICATION NOTES** Western blot of immunoprecipitates performed using Normal Pig Serum (Cat. No. S100-020), Goat anti-Rabbit Light Chain HRP Conjugate (Cat. No. A120-113P) and 4-20% SDS-PAGE (link to IP-western blot protocol in Additional Info section below).

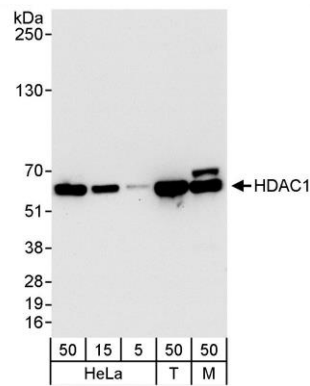
Western blot of lysates performed using standard western blot reagents and 4-20% SDS-PAGE.

**ADDITIONAL INFO** <https://www.bethyl.com/product/A300-713A-M>

Use the link above to view SDS, a current list of citations, and other product specific information.

IP-western blot protocol: [https://www.bethyl.com/content/protocol\\_IP\\_WB](https://www.bethyl.com/content/protocol_IP_WB)

This document certifies that this product has met all of the quality control standards defined by Bethyl Laboratories, Inc.  
Eric McIntush, PhD | Chief Scientific Officer Date: June 21, 2019

**Detection of human and mouse HDAC1 by western blot.**

*Samples:* Whole cell lysate from HeLa (5, 15, and 50 µg), HEK293T (T; 50 µg), and mouse NIH 3T3 (M; 50 µg) cells.

*Antibody:* Affinity purified rabbit anti-HDAC1 antibody

A300-713A-M used at 1:1000. *Detection:*

Chemiluminescence with an exposure time of 30 seconds.