

PRMT1 Antibody

Rabbit Polyclonal

Antigen Affinity Purified

Protein ID NP_001527.2

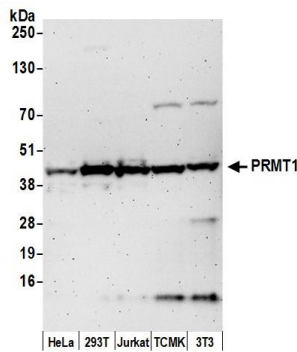
Catalog No. A300-722A

GeneID 3276

Lot No. A300-722A-1

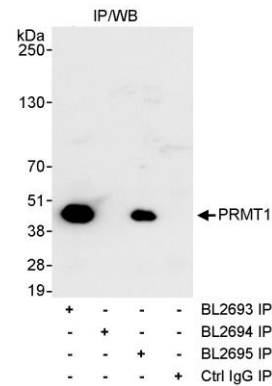


APPLICATIONS	WB, IP, IHC
SPECIES REACTIVITY	Human, Mouse
PRESUMED REACTIVITY	Based on 100% sequence identity, this antibody is predicted to react with Rat
ISOTYPE	IgG
AMOUNT	100 µl at 1 mg/ml
STORAGE/SHELF LIFE	2 - 8° C / 1 year from date of receipt
PHYSICAL STATE	Liquid
BUFFER	Tris-citrate/phosphate buffer, pH 7 to 8 containing 0.09% Sodium Azide
ORIGIN	USA
PRODUCTION PROCEDURES	Antibody was affinity purified using an epitope specific to PRMT1 immobilized on solid support. The epitope recognized by A300-722A maps to a region between residue 1 and 50 of human Protein Arginine N-Methyltransferase 1 using the numbering given in entry NP_001527.2 (GeneID 3276). Immunoglobulin concentration was determined by extinction coefficient: absorbance at 280 nm of 1.4 equals 1.0 mg of IgG.
APPLICATIONS	Centrifuge tube to remove product from lid. Optimal working dilutions should be determined experimentally by the investigator. Prepare working dilution immediately before use. Western Blot 1:2,000 - 1:10,000 Immunoprecipitation 2 - 5 µg/mg lysate Immunohistochemistry 1:500 - 1:2,000. Epitope retrieval with citrate buffer pH 6.0 is recommended for FFPE tissue sections.
APPLICATION NOTES	Western blot of immunoprecipitates performed using ReliaBLOT® Reagents (Cat. No. WB120) and 4-20% SDS-PAGE.
IHC HUMAN CONTROLS	Breast Carcinoma, Colon Carcinoma, Lung Cancer, Ovarian Carcinoma, Prostate Carcinoma, Testicular Seminoma
IHC MOUSE CONTROLS	Colon Carcinoma CT26, Renal Cell Carcinoma, Squamous Cell Carcinoma, Teratoma
ADDITIONAL INFO	http://www.bethyl.com/product/A300-722A Use the link above to view SDS, a current list of citations, and other product specific information.



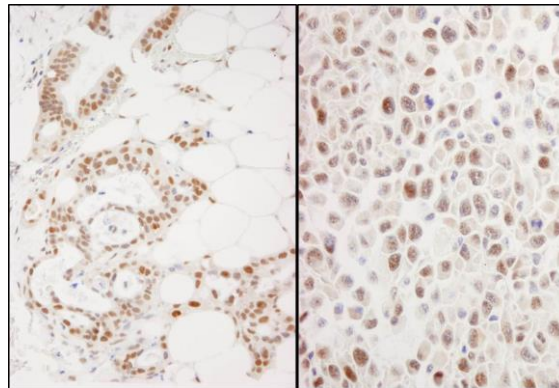
Detection of human and mouse PRMT1 by western blot.

Samples: Whole cell lysate (50 µg) from HeLa, 293T, Jurkat, mouse TCMK-1, and mouse NIH3T3 cells prepared using NETN lysis buffer. **Antibody:** Affinity purified rabbit anti-PRMT1 antibody A300-722A (lot A300-722A-1) used for WB at 0.1 µg/ml. **Detection:** Chemiluminescence with an exposure time of 3 minutes.



Detection of human PRMT1 by western blot of immunoprecipitates.

Samples: Whole cell lysate (1 mg for IP, 20% of IP loaded) from HeLa cells. **Antibodies:** Affinity purified rabbit anti-PRMT1 antibody BL2693 (Cat. No. A300-722A) used for IP at 3 µg/mg lysate (B). PRMT1 was also immunoprecipitated using rabbit anti-PRMT1 antibody BL2695 (Cat. No. A300-723A) at 3 µg/mg lysate. For blotting immunoprecipitated PRMT1, BL2695 was used at 1 µg/ml. **Detection:** Chemiluminescence with an exposure time of 10 seconds.



Detection of human and mouse PRMT1 by immunohistochemistry.

Sample: FFPE sections of human ovarian carcinoma (left) and mouse squamous cell carcinoma (right). **Antibody:** Affinity purified rabbit anti-PRMT1 (Cat. No. A300-722A Lot1) used at a dilution of 1:1,000 (1 µg/ml). **Detection:** DAB