

PRMT1 Antibody

Rabbit Polyclonal

Antigen Affinity Purified

Protein ID NP_001527.2

Catalog No. A300-723A

GeneID 3276

Lot No. A300-723A-2



APPLICATIONS	WB, IP, IHC
SPECIES REACTIVITY	Human, Mouse
PRESUMED REACTIVITY	Based on 100% sequence identity, this antibody is predicted to react with Rat, <i>X. laevis</i> and <i>X. tropicalis</i>
AMOUNT	100 µl
CONCENTRATION	200 µg/ml
STORAGE/SHELF LIFE	2 - 8° C / 1 year from date of receipt
PHYSICAL STATE	Liquid
BUFFER	Tris-buffered Saline containing 0.1% BSA and 0.09% Sodium Azide
ISOTYPE	IgG
ORIGIN	USA
PRODUCTION PROCEDURES	Antibody was affinity purified using an epitope specific to PRMT1 immobilized on solid support.

The epitope recognized by A300-723A maps to a region between residue 300 and the C-terminus (residue 361) of human Protein Arginine N-Methyltransferase 1 using the numbering given in entry NP_001527.2 (GeneID 3276).

Immunoglobulin concentration was determined by extinction coefficient: absorbance at 280 nm of 1.4 equals 1.0 mg of IgG.

APPLICATIONS Centrifuge tube to remove product from lid. Optimal working dilutions should be determined experimentally by the investigator. Prepare working dilution immediately before use.

Western Blot 1:2,000 – 1:10,000

Immunoprecipitation 2 – 5 µg/mg lysate

Immunohistochemistry 1:200 – 1:1,000. Epitope retrieval with citrate buffer pH 6.0 is recommended for FFPE tissue sections.

APPLICATION NOTES Western blot of immunoprecipitates performed using Normal Pig Serum (Cat. No. S100-020), Goat anti-Rabbit Light Chain HRP Conjugate (Cat. No. A120-113P) and 4-20% SDS-PAGE (link to IP-western blot protocol in Additional Info section below).

Western blot of lysates performed using standard western blot reagents and 4-20% SDS-PAGE.

IHC HUMAN CONTROLS Breast Carcinoma, Colon Carcinoma, Metastatic Lymph Node, Non-Small Cell Lung Cancer, Ovarian Carcinoma, Prostate Carcinoma, Testicular Seminoma

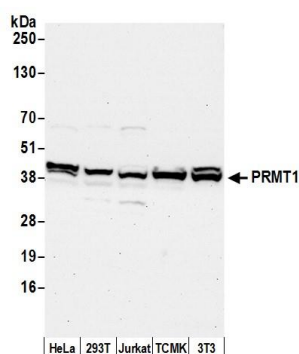
IHC MOUSE CONTROLS Plasmacytoma, Renal Cell Carcinoma, Squamous Cell Carcinoma

ADDITIONAL INFO <https://www.bethyl.com/product/A300-723A>

Use the link above to view SDS, a current list of citations, and other product specific information.

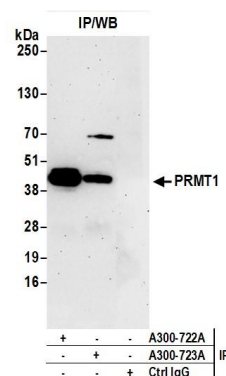
IP-western blot protocol: https://www.bethyl.com/content/protocol_IP_WB

This document certifies that this product has met all of the quality control standards defined by Bethyl Laboratories, Inc.
Eric McIntush, PhD | Chief Scientific Officer Date: June 21, 2019



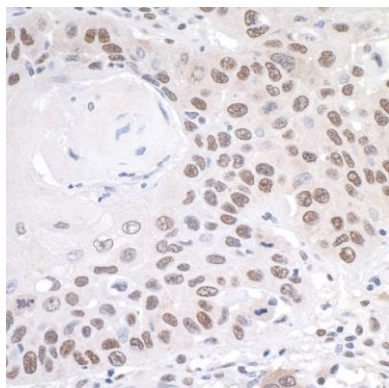
Detection of human and mouse PRMT1 by western blot.

Samples: Whole cell lysate (50 µg) from HeLa, HEK293T, Jurkat, mouse TCMK-1, and mouse NIH 3T3 cells prepared using NETN lysis buffer. *Antibody:* Affinity purified rabbit anti-PRMT1 antibody A300-723A (lot A300-723A-2) used for WB at 0.1 µg/ml. *Detection:* Chemiluminescence with an exposure time of 30 seconds.



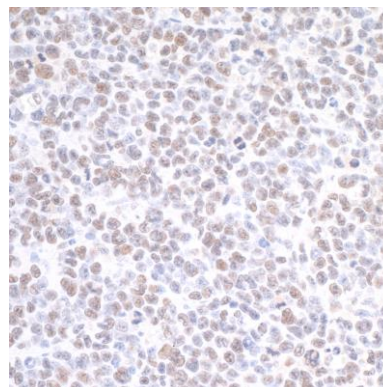
Detection of human PRMT1 by western blot of immunoprecipitates.

Samples: Whole cell lysate (1.0 mg per IP reaction; 20% of IP loaded) from HEK293T cells prepared using NETN lysis buffer + 0.3% SDS, 1.5% sodium deoxycholate. *Antibodies:* Affinity purified rabbit anti-PRMT1 antibody A300-723A (lot A300-723A-2) used for IP at 3 µg per reaction. PRMT1 was also immunoprecipitated by rabbit anti-PRMT1 antibody A300-722A. For blotting immunoprecipitated PRMT1, A300-723A was used at 1 µg/ml. *Detection:* Chemiluminescence with an exposure time of 75 seconds.



Detection of human PRMT1 by immunohistochemistry.

Sample: FFPE section of human head and neck squamous cell carcinoma. *Antibody:* Affinity purified rabbit anti-PRMT1 (Cat. No. A300-723A Lot2) used at a dilution of 1:1000 (0.2 µg/ml). *Detection:* DAB



Detection of mouse PRMT1 by immunohistochemistry.

Sample: FFPE section of mouse plasmacytoma. *Antibody:* Affinity purified rabbit anti-PRMT1 (Cat. No. A300-723A Lot2) used at a dilution of 1:200 (1 µg/ml). *Detection:* DAB