

rpL7a/SURF3 Antibody

Rabbit Polyclonal

Antigen Affinity Purified Protein ID NP_000963.1
Catalog No. A300-749A GeneID 6130
Lot No. A300-749A-1



APPLICATIONS WB, IP, IHC
SPECIES REACTIVITY Human, Mouse
PRESUMED REACTIVITY Based on 100% sequence identity, this antibody is predicted to react with Rat, Chicken and Bovine
AMOUNT 100 μ l
CONCENTRATION 200 μ g/ml
STORAGE/SHELF LIFE 2 – 8° C / 1 year from date of receipt
PHYSICAL STATE Liquid
BUFFER Tris-buffered Saline containing 0.1% BSA and 0.09% Sodium Azide
ISOTYPE IgG
ORIGIN USA
PRODUCTION PROCEDURES Antibody was affinity purified using an epitope specific to rpL7a/SURF3 immobilized on solid support.

The epitope recognized by A300-749A maps to a region between residue 215 and the C-terminus (residue 266) of human Ribosomal Protein L7a using the numbering given in entry NP_000963.1 (GeneID 6130).

Immunoglobulin concentration was determined by extinction coefficient: absorbance at 280 nm of 1.4 equals 1.0 mg of IgG.

APPLICATIONS Centrifuge tube to remove product from lid. Optimal working dilutions should be determined experimentally by the investigator. Prepare working dilution immediately before use.

Western Blot 1:2,000 – 1:10,000

Immunoprecipitation 2 – 5 μ g/mg lysate

Immunohistochemistry 1:100 – 1:500. Epitope retrieval with Tris-EDTA pH 9.0 is recommended for FFPE tissue sections.

APPLICATION NOTES Western blot of immunoprecipitates performed using Normal Pig Serum (Cat. No. S100-020), Goat anti-Rabbit Light Chain HRP Conjugate (Cat. No. A120-113P) and 4-20% SDS-PAGE (link to IP-western blot protocol in Additional Info section below).

Western blot of lysates performed using standard western blot reagents and 4-20% SDS-PAGE.

IHC HUMAN CONTROLS Colon Carcinoma, Non-Small Cell Lung Cancer, Ovarian Carcinoma

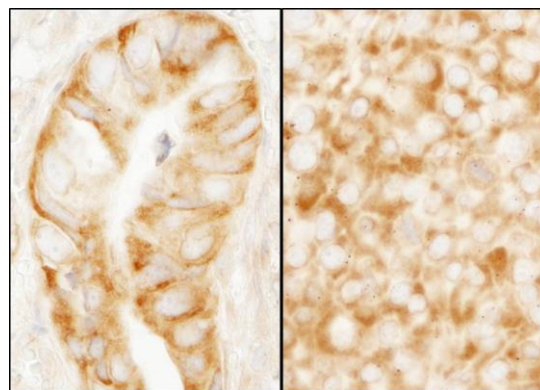
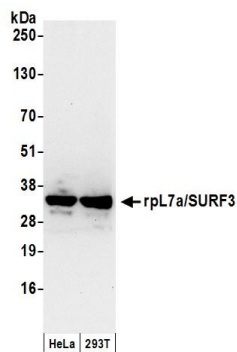
IHC MOUSE CONTROLS Colon Carcinoma CT26, Renal Cell Carcinoma, Teratoma

ADDITIONAL INFO <https://www.bethyl.com/product/A300-749A>

Use the link above to view SDS, a current list of citations, and other product specific information.

IP-western blot protocol: https://www.bethyl.com/content/protocol_IP_WB

This document certifies that this product has met all of the quality control standards defined by Bethyl Laboratories, Inc.
Eric McIntush, PhD | Chief Scientific Officer Date: June 21, 2019

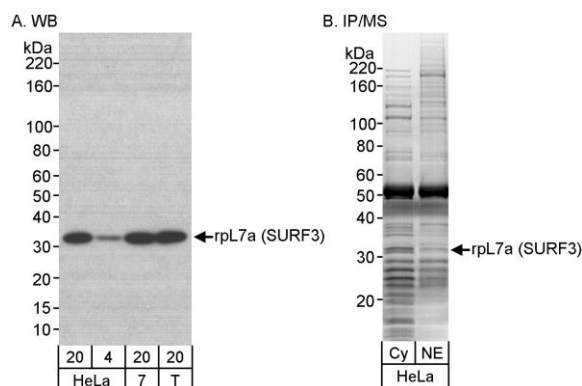


Detection of human rpL7a/SURF3 by western blot.

Samples: Whole cell lysate (50 µg) from HeLa and HEK293T cells prepared using NETN lysis buffer. **Antibody:** Affinity purified rabbit anti-rpL7a/SURF3 antibody A300-749A (lot A300-749A-1) used for WB at 0.1 µg/ml. **Detection:** Chemiluminescence with an exposure time of 10 seconds.

Detection of human and mouse rpL7a (SURF3) by immunohistochemistry.

Sample: FFPE sections of human colon carcinoma (left) and mouse renal cell carcinoma (right). **Antibody:** Affinity purified rabbit anti-rpL7a (SURF3) (Cat. No. A300-749A Lot1) used at a dilution of 1:200 (1 µg/ml). **Detection:** DAB



Detection of human rpL7a (SURF3) by western blot and immunoprecipitation/Mass Spectrometry.

Samples: A) Whole cell lysate from HeLa (20 and 4 µg), MCF-7 (7; 20 µg) and HEK293T (T; 20 µg) cells. B) Cytosolic and nuclear extract (10 mg/IP) from HeLa S3 cells. **Antibodies:** Affinity purified rabbit anti-rpL7a (SURF3) antibody (Cat. No. A300-749A) used for WB at 0.1 µg/ml (A) and for IP at 0.7 µg/mg lysate (B). **Detection:** Chemiluminescence with an exposure time of 5 sec (A) and vMALDI-LTQ and LC-MS/MS of Coomassie stained bands (B).