

# Atrophin 1 Antibody

Rabbit Polyclonal

Antigen Affinity Purified

Protein ID NP\_001007027.1

Catalog No. A300-753A

GeneID 1822

Lot No. A300-753A-1



<b>APPLICATIONS</b>	WB, IP
<b>SPECIES REACTIVITY</b>	Human
<b>PRESUMED REACTIVITY</b>	Based on 100% sequence identity, this antibody is predicted to react with Mouse, Rat and Chimpanzee
<b>ISOTYPE</b>	IgG
<b>AMOUNT</b>	100 µl at 1 mg/ml
<b>STORAGE/SHELF LIFE</b>	2 – 8° C / 1 year from date of receipt
<b>PHYSICAL STATE</b>	Liquid
<b>BUFFER</b>	Tris-citrate/phosphate buffer, pH 7 to 8 containing 0.09% Sodium Azide
<b>ORIGIN</b>	USA
<b>PRODUCTION PROCEDURES</b>	Antibody was affinity purified using an epitope specific to Atrophin 1 immobilized on solid support.

The epitope recognized by A300-753A maps to a region between residue 1150 and the C-terminus (residue 1190) of human Atrophin 1 using the numbering given in entry NP\_001007027.1 (GeneID 1822 ).

Immunoglobulin concentration was determined by extinction coefficient: absorbance at 280 nm of 1.4 equals 1.0 mg of IgG.

**APPLICATIONS** Centrifuge tube to remove product from lid. Optimal working dilutions should be determined experimentally by the investigator. Prepare working dilution immediately before use.

Western Blot 1:500 – 1:2,500

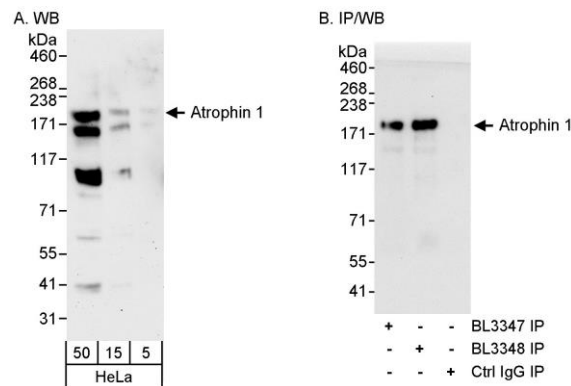
Immunoprecipitation 3 – 5 µg/mg lysate

**APPLICATION NOTES** Western blot of immunoprecipitates performed using ReliaBLOT® Reagents (Cat. No. WB120) and 4-8% SDS-PAGE.

Western blot of lysates performed using standard western blot reagents and 4-8% SDS-PAGE.

**ADDITIONAL INFO** <http://www.bethyl.com/product/A300-753A>

Use the link above to view SDS, a current list of citations, and other product specific information.



**Detection of human Atrophin 1 by western blot and immunoprecipitation.** *Samples:* Whole cell lysate (5, 15 and 50 µg for WB; 1 mg for IP, 20% of IP loaded) from HeLa cells. *Antibodies:* Affinity purified rabbit anti-Atrophin 1 antibody BL3348 (Cat. No. A300-753A) used for WB at 1 µg/ml (A and B) and used for IP at 3 µg/mg lysate (B). Atrophin 1 was also immunoprecipitated using rabbit anti-Atrophin 1 antibody BL3347 (Cat. No. A300-752A) at 3 µg/mg lysate. *Detection:* Chemiluminescence with exposure times of 3 minutes (A) and 30 seconds (B).