

Phospho KAP-1 (S824) Antibody

Rabbit Polyclonal

Antigen Affinity Purified Protein ID NP_005753.1

Catalog No. A300-767A GeneID 10155

Lot No. A300-767A-2



APPLICATIONS	WB, IP, ICC, IF, PLA
SPECIES REACTIVITY	Human, Mouse
ISOTYPE	IgG
AMOUNT	100 µl at 0.2 mg/ml
STORAGE/SHELF LIFE	2 - 8° C / 1 year from date of receipt
PHYSICAL STATE	Liquid
BUFFER	Tris-buffered Saline containing 0.1% BSA and 0.09% Sodium Azide
ORIGIN	USA
PRODUCTION PROCEDURES	Antibody was affinity purified using an epitope specific to Phospho KAP-1 (S824) immobilized on solid support.

Immunogen was a synthetic phosphorylated peptide, which represented a portion of human KRAB-Associated Protein 1 surrounding Serine 824 according to the numbering given in entry NP_005753.1 (GeneID 10155).

Immunoglobulin concentration was determined by extinction coefficient: absorbance at 280 nm of 1.4 equals 1.0 mg of IgG.

APPLICATIONS Centrifuge tube to remove product from lid. Optimal working dilutions should be determined experimentally by the investigator. Prepare working dilution immediately before use.

Western Blot	1:1000 - 1:5000
Immunoprecipitation	2 to 5 µg/mg lysate
Immunocytochemistry	1:200 to 1:2,000. Formaldehyde fixation is recommended. Permeabilization with Triton-X 100 is recommended for formaldehyde-fixed cells.
Immunofluorescence	1:200 to 1:2,500.
Proximity Ligation Assay	1:1,000 - 1:10,000

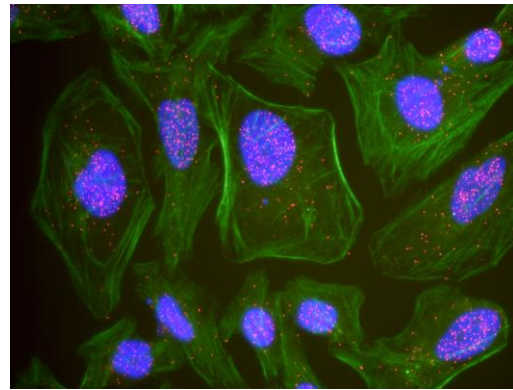
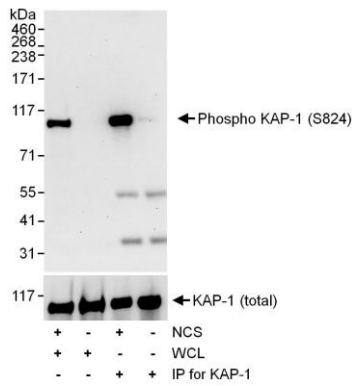
APPLICATION NOTES Western blot of immunoprecipitates performed using ReliaBLOT® Reagents (Cat. No. WB120) and 4-8% SDS-PAGE.

Western blot of lysates performed using standard western blot reagents and 4-8% SDS-PAGE.

IHC HUMAN CONTROLS HeLa Cells, Lung Cancer

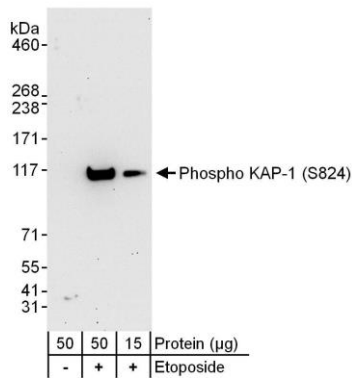
ADDITIONAL INFO <http://www.bethyl.com/product/A300-767A>

Use the link above to view SDS, a current list of citations, and other product specific information.

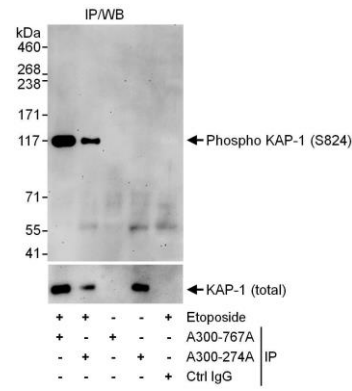


Detection of Human Phospho KAP-1 (S824) by Western Blot of WCL and Immunoprecipitates. *Samples:* Whole cell lysate (50 µg for WCL lanes; 1 mg for IP, 20% of IP loaded) from asynchronous HeLa cells that were mock treated or treated with neocarzinostatin (NCS; 200 ng/ml, 30 minutes). *Antibodies:* Affinity purified rabbit anti-phospho KAP-1 (S824) antibody A300-767A (lot A300-767A-2) used for WB at 0.1 µg/ml. KAP-1 was immunoprecipitated using rabbit anti-KAP-1 antibody A300-274A at 6 µg/mg lysate. To examine total KAP-1, the blot was stripped and then blotted with A300-274A at 1 µg/ml. *Detection:* Chemiluminescence with exposure times of 30 seconds (upper panel) and 1 second (lower panel).

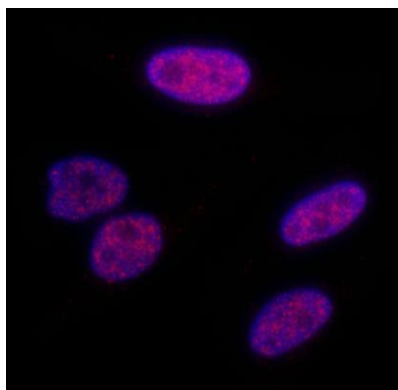
This antibody is qualified for the Proximity Ligation Assay (PLA). The above image shows representative results for PLA using three color fluorescence, including DAPI stained nuclei (blue), phalloidin stained cytoplasmic F-actin (green), and PLA positive signal (red).



Detection of Mouse Phospho KAP-1 (S824) by Western Blot of Immunoprecipitates. *Samples:* Whole cell lysate (1 mg for IP; 20% of IP loaded) from NIH3T3 cells that were mock treated (-) or treated with Etoposide (100 µM, 2h). *Antibodies:* Affinity purified rabbit anti-Phospho KAP-1 (S824) antibody A300-767A (lot A300-767A-2) used for IP at 6 µg/mg lysate. Phospho KAP-1 (S824) was also immunoprecipitated by rabbit anti-KAP-1 antibody A300-274A. For blotting immunoprecipitated Phospho KAP-1 (S824), A300-767A was used at 0.2 µg/ml. *Detection:* Chemiluminescence with an exposure time of 3 minutes.



Detection of Mouse Phospho KAP-1 (S824) by Western Blot of Immunoprecipitates. *Samples:* Whole cell lysate (1 mg for IP; 20% of IP loaded) from NIH3T3 cells that were mock treated (-) or treated with Etoposide (100 µM, 2h). *Antibodies:* Affinity purified rabbit anti-Phospho KAP-1 (S824) antibody A300-767A (lot A300-767A-2) used for IP at 6 µg/mg lysate. Phospho KAP-1 (S824) was also immunoprecipitated by rabbit anti-KAP-1 antibody A300-274A. For blotting immunoprecipitated Phospho KAP-1 (S824), A300-767A was used at 0.2 µg/ml. *Detection:* Chemiluminescence with an exposure time of 3 minutes.



Detection of Human Phospho KAP-1 (S824) by Immunocytochemistry.

Samples: NBF-fixed, asynchronous HeLa cells. *Antibody:* Affinity purified rabbit anti-Phospho KAP-1 (S824) (Cat. No. A300-767A Lot2) used at a dilution of 1:200 (1 μ g/ml). *Detection:* Red fluorescent Anti-rabbit IgG-DyLight[®] 594 conjugated used at a dilution of 1:100.