

CRSP1/TRAP220 Antibody

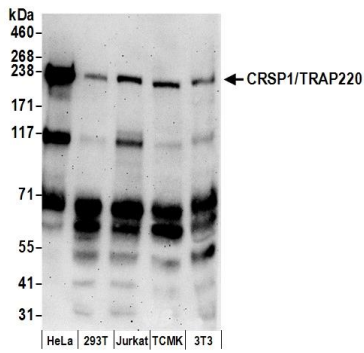
Rabbit Polyclonal

Antigen Affinity Purified Protein ID NP_004765.2
Catalog No. A300-793A Gene ID 5469
Lot No. A300-793A-3

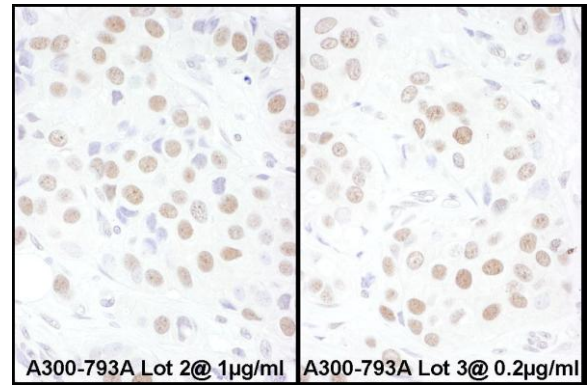


APPLICATIONS	WB, IP, IHC-P, IF, PLA
REACTIVITY TESTED	Human, Mouse
PRESUMED REACTIVITY	Based on 100% sequence identity, this antibody is predicted to react with Rat, Chicken, Turkey, Bovine, Dog, Horse, Rabbit, Guinea pig_10141, Pig, Panda, Orangutan, Rhesus Monkey, Gorilla, Chimpanzee, West Indian ocean coelacanth and White-tufted-ear marmoset.
ISOTYPE	IgG
AMOUNT	0.1 ml at 1 mg/ml
STORAGE/SHELF LIFE	2 - 8° C / 1 year from date of receipt
PHYSICAL STATE	Liquid
BUFFER	Tris-citrate/phosphate buffer, pH 7 to 8 containing 0.09% Sodium Azide
ORIGIN	USA
PRODUCTION PROCEDURES	Antibody was affinity purified using an epitope specific to CRSP1/TRAP220 immobilized on solid support. The epitope recognized by A300-793A maps to a region between residue 1525 and the C-terminus (residue 1581) of human Cofactor Required for Sp1 Transcriptional Activation 1 (Thyroid Hormone Receptor-Associated Protein Complex Component TRAP220) using the numbering given in entry NP_004765.2 (GeneID 5469). Immunoglobulin concentration was determined by extinction coefficient: absorbance at 280 nm of 1.4 equals 1.0 mg of IgG.
APPLICATIONS	Centrifuge tube to remove product from lid. Optimal working dilutions should be determined experimentally by the investigator. Prepare working dilution immediately before use. Western Blot 1:2,000 to 1:10,000 Immunoprecipitation 2 to 5 µg/mg lysate Immunohistochemistry 1:1,000 to 1:5,000. Epitope retrieval with citrate buffer pH6.0 is recommended for FFPE tissue sections. Immunofluorescence 1:500 to 1:2,500. Proximity Ligation Assay 1:1,000 - 1:20,000
APPLICATION NOTES	Validation by IP/Western Blot was performed using a 4-8% SDS-PAGE gel and ReliaBLOT® Reagents (Cat. No. WB120). IHC validation was performed using Immunohistochemistry Accessory Kit (Cat. # IHC-101).
IHC HUMAN CONTROLS	Breast Carcinoma, Colon Carcinoma, Lung Adenocarcinoma, Ovarian Carcinoma, Stomach Adenocarcinoma, Testicular Seminoma
IHC MOUSE CONTROLS	Renal Cell Carcinoma
ADDITIONAL INFO	http://www.bethyl.com/product/A300-793A Use the link above to view SDS, a current list of citations, and other product specific information.

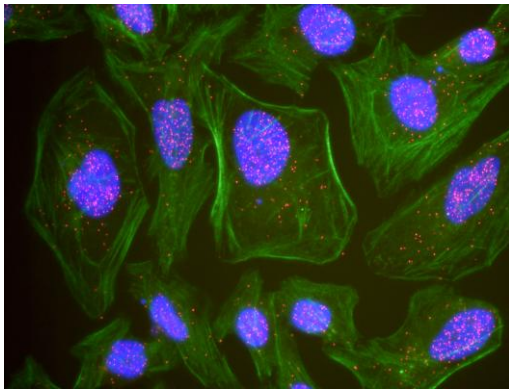
CRSP1/TRAP220 Antibody: A300-793A



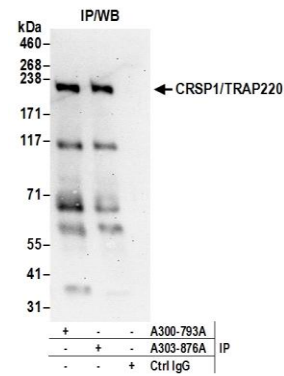
Detection of Human and Mouse CRSP1/TRAP220 by Western Blot. *Samples:* Whole cell lysate (50 µg) from HeLa, 293T, Jurkat, mouse TCMK-1, and mouse NIH3T3 cells prepared using NETN lysis buffer. *Antibodies:* Affinity purified rabbit anti-CRSP1/TRAP220 antibody A300-793A (lot A300-793A-3) used for WB at 0.1 µg/ml. *Detection:* Chemiluminescence with an exposure time of 3 minutes.



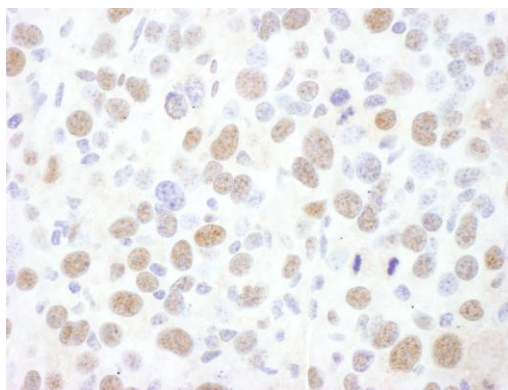
Detection of Human CRSP1/TRAP220 by Immunohistochemistry. *Samples:* FFPE serial sections of human breast carcinoma. *Antibody:* Affinity purified rabbit anti-CRSP1/TRAP220 (Cat. No. A300-793A Lot2, left panel and Cat. No. A300-793A Lot3, right panel) used at a dilution of 1:1,000 (1 µg/ml) and 1:5,000 (0.2 µg/ml). *Detection:* DAB



This antibody is qualified for the Proximity Ligation Assay (PLA). PLA uses paired antibodies, so please refer to the PLA page of our website for specific imaging obtained by pairing this antibody with other qualified antibodies. The above image shows representative results for PLA using three color fluorescence, including DAPI stained nuclei (blue), phalloidin stained cytoplasmic F-actin (green), and PLA positive signal (red).



Detection of Human CRSP1/TRAP220 by Western Blot of Immunoprecipitates. *Samples:* Whole cell lysate (0.5 or 1.0 mg per IP reaction; 20% of IP loaded) from HeLa cells prepared using NETN lysis buffer. *Antibodies:* Affinity purified rabbit anti-CRSP1/TRAP220 antibody A300-793A (lot A300-793A-3) used for IP at 6 µg per reaction. CRSP1/TRAP220 was also immunoprecipitated by goat anti-CRSP1/TRAP220 antibody A303-876A. For blotting immunoprecipitated CRSP1/TRAP220, A300-793A was used at 0.4 µg/ml. *Detection:* Chemiluminescence with an exposure time of 75 seconds.



Detection of Mouse CRSP1/TRAP220 by Immunohistochemistry. *Samples:* FFPE section of mouse renal cell carcinoma. *Antibody:* Affinity purified rabbit anti-CRSP1/TRAP220 (Cat. No. A300-793A Lot 3) used at a dilution of 1:1,000 (1 μ g/ml). *Detection:* DAB