

# DC8 Antibody

Rabbit Polyclonal

Antigen Affinity Purified

Catalog No. A300-794A

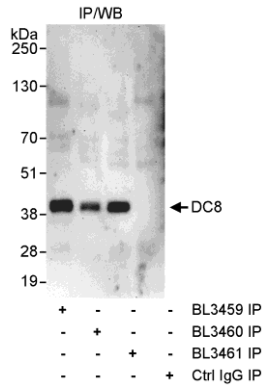
Lot No. A300-794A-1

Protein ID NP\_056286.2

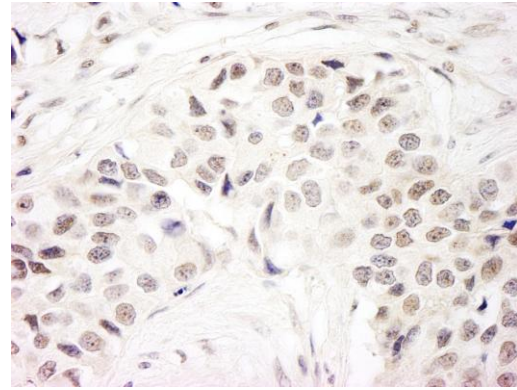
Gene ID 25936



<b>APPLICATIONS</b>	IP, IHC-P, IF
<b>REACTIVITY TESTED</b>	Human
<b>PRESUMED REACTIVITY</b>	Based on 100% sequence identity, this antibody is predicted to react with Panda, Orangutan, Gorilla, Chimpanzee, White-tufted-ear marmoset and Northern white-cheeked gibbon.
<b>ISOTYPE</b>	IgG
<b>AMOUNT</b>	0.1 ml at 1 mg/ml
<b>STORAGE/SHELF LIFE</b>	2 - 8° C / 1 year from date of receipt
<b>PHYSICAL STATE</b>	Liquid
<b>BUFFER</b>	Tris-citrate/phosphate buffer, pH 7 to 8 containing 0.09% Sodium Azide
<b>ORIGIN</b>	USA
<b>PRODUCTION PROCEDURES</b>	Antibody was affinity purified using an epitope specific to DC8 immobilized on solid support.  The epitope recognized by A300-794A maps to a region between residue 150 and 200 of human DC8 (C1orf48) using the numbering given in entry NP_056286.2 (GeneID 25936 ).  Immunoglobulin concentration was determined by extinction coefficient: absorbance at 280 nm of 1.4 equals 1.0 mg of IgG.
<b>APPLICATIONS</b>	Centrifuge tube to remove product from lid. Optimal working dilutions should be determined experimentally by the investigator. Prepare working dilution immediately before use.  Western Blot                      Not recommended. Use rabbit anti-DC8 antibody A300-795A. Immunoprecipitation            2 to 5 µg/mg lysate Immunohistochemistry        1:500 to 1:2,000. Epitope retrieval with citrate buffer pH6.0 is recommended for FFPE tissue sections. Immunofluorescence        1:250 to 1:2,000
<b>APPLICATION NOTES</b>	Validation by IP/Western Blot was performed using a 4-20% SDS-PAGE gel and ReliaBLOT® Reagents (Cat. No. WB120).  IHC validation was performed using Immunohistochemistry Accessory Kit (Cat. # IHC-101).
<b>IHC HUMAN CONTROLS</b>	Breast Carcinoma, Ovarian Carcinoma, Prostate Carcinoma
<b>ADDITIONAL INFO</b>	<a href="http://www.bethyl.com/product/A300-794A">http://www.bethyl.com/product/A300-794A</a>  Use the link above to view SDS, a current list of citations, and other product specific information.



**Detection of Human DC8 by Western Blot of Immunoprecipitates.** *Samples:* Whole cell lysate (1 mg for IP, 20% of IP loaded) from HeLa cells. *Antibodies:* Affinity purified rabbit anti-DC8 antibody BL3459 (Cat. No. A300-794A) used for IP at 3  $\mu\text{g}/\text{mg}$  lysate. DC8 was also immunoprecipitated by rabbit anti-DC8 antibodies BL3460 and BL3461 (Cat. No. A300-795A). For blotting immunoprecipitated DC8, BL3461 was used at 1  $\mu\text{g}/\text{ml}$ . *Detection:* Chemiluminescence with an exposure time of 3 minutes.



**Detection of Human DC8 by Immunohistochemistry.** *Sample:* FFPE section of human breast carcinoma. *Antibody:* Affinity purified rabbit anti-DC8 (Cat. No. A300-794A Lot1) used at a dilution of 1:1,000 (1 $\mu\text{g}/\text{ml}$ ). *Detection:* DAB