

# BRG1 /SMARCA4 Antibody

Rabbit Polyclonal

Antigen Affinity Purified Protein ID NP\_003063.2  
Catalog No. A300-813A-T GeneID 6597  
Lot No. A300-813A-T-3



**APPLICATIONS** WB, IP, IHC  
**SPECIES REACTIVITY** Human, Mouse  
**ISOTYPE** IgG  
**AMOUNT** 20 µl (2 blots)  
**STORAGE/SHELF LIFE** 2 – 8° C / 1 year from date of receipt  
**PHYSICAL STATE** Liquid  
**BUFFER** Tris-buffered Saline containing 0.1% BSA and 0.09% Sodium Azide  
**ORIGIN** USA  
**PRODUCTION PROCEDURES** Antibody was affinity purified using an epitope specific to BRG1 /SMARCA4 immobilized on solid support.

The epitope recognized by A300-813A-T maps to a region between residue 75 and 125 of human BRM/SWI2-Related Gene 1 (SWI/SNF Related, Matrix Associated, Actin Dependent Regulator of Chromatin, Subfamily A, member 4) using the numbering given in entry NP\_003063.2 (GeneID 6597).

**APPLICATIONS** Centrifuge tube to remove product from lid. Optimal working dilutions should be determined experimentally by the investigator. Prepare working dilution immediately before use.

Western Blot 1:1000

Immunoprecipitation The antibody contained within A300-813A-T has been qualified for use in immunoprecipitation; however, we recommend using the alternative formulation of this antibody found as product A300-813A.

Immunohistochemistry 1:50 – 1:400. Epitope retrieval with citrate buffer pH 6.0 is recommended for FFPE tissue sections.

**APPLICATION NOTES** Western blot of immunoprecipitates performed using Normal Pig Serum (Cat. No. S100-020), Goat anti-Rabbit Light Chain HRP Conjugate (Cat. No. A120-113P) and 4-8% SDS-PAGE (link to IP-western blot protocol in Additional Info section below).

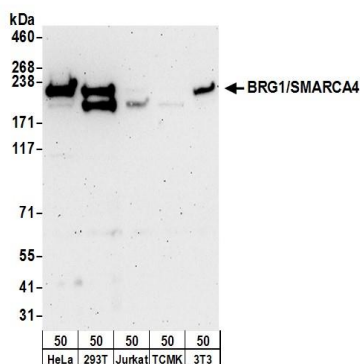
Western blot of lysates performed using standard western blot reagents and 4-8% SDS-PAGE.

**ADDITIONAL INFO** <https://www.bethyl.com/product/A300-813A-T>  
Use the link above to view SDS, a current list of citations, and other product specific information.  
IP-western blot protocol [https://www.bethyl.com/content/protocol\\_IP\\_WB](https://www.bethyl.com/content/protocol_IP_WB)

This document certifies that this product has met all of the quality control standards defined by Bethyl Laboratories, Inc.

Eric McIntush, PhD | Chief Scientific Officer

Date: November 26, 2018



**Detection of human and mouse BRG1/SMARCA4 by western blot.** *Samples:* Whole cell lysate (50 µg) from HeLa, HEK293T, Jurkat, mouse TCMK-1, and mouse NIH 3T3 cells. *Antibody:* Affinity purified rabbit anti-BRG1/SMARCA4 antibody A300-813A-T used at 1:1000. *Detection:* Chemiluminescence with an exposure time of 3 minutes.