

TIF1 Alpha/TRIM24 Antibody

Rabbit Polyclonal

Antigen Affinity Purified Protein ID NP_056989.2
Catalog No. A300-815A Gene ID 8805
Lot No. A300-815A-1



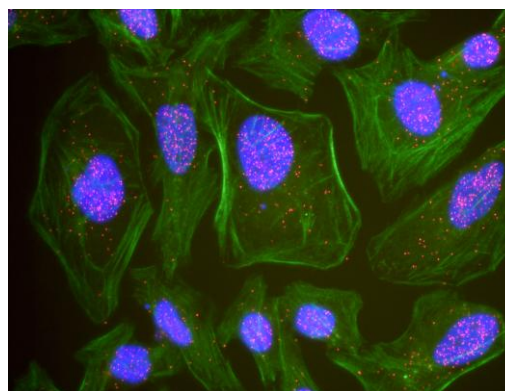
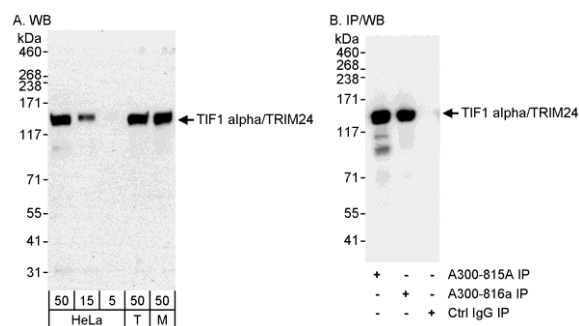
| | |
|------------------------------|--|
| APPLICATIONS | WB, IP, IHC-P, IF, PLA |
| REACTIVITY TESTED | Human, Mouse |
| PRESUMED REACTIVITY | Based on 100% sequence identity, this antibody is predicted to react with Rat, Bovine, Dog, Horse, Rabbit, Guinea pig_10141, Panda, Orangutan, Rhesus Monkey, Gorilla, Chimpanzee, White-tufted-ear marmoset, Crab-eating macaque, Chinese hamster and Small-eared galago. |
| ISOTYPE | IgG |
| AMOUNT | 0.1 ml at 0.2 mg/ml |
| STORAGE/SHELF LIFE | 2 - 8° C / 1 year from date of receipt |
| PHYSICAL STATE | Liquid |
| BUFFER | Tris-buffered Saline with 0.1% BSA containing 0.09% Sodium Azide |
| ORIGIN | USA |
| PRODUCTION PROCEDURES | Antibody was affinity purified using an epitope specific to TIF1 Alpha/TRIM24 immobilized on solid support. |

The epitope recognized by A300-815A maps to a region between residue 700 and 750 of human Transcriptional Intermediary Factor 1 Alpha (Tripartite Motif-Containing 24) using the numbering given in entry NP_056989.2 (GeneID 8805).

Immunoglobulin concentration was determined by extinction coefficient: absorbance at 280 nm of 1.4 equals 1.0 mg of IgG.

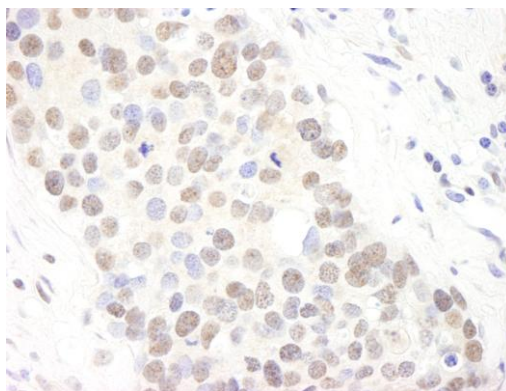
| | |
|---------------------------|--|
| APPLICATIONS | Centrifuge tube to remove product from lid. Optimal working dilutions should be determined experimentally by the investigator. Prepare working dilution immediately before use. Western Blot 1:2,000 to 1:10,000 Immunoprecipitation 2 to 5 µg/mg lysate Immunohistochemistry 1:200 to 1:1,000. Epitope retrieval with citrate buffer pH6.0 is recommended for FFPE tissue sections. Immunofluorescence 1:100 to 1:500 Proximity Ligation Assay 1:200 - 1:4,000 |
| APPLICATION NOTES | Validation by IP/Western Blot was performed using a 4-8% SDS-PAGE gel and ReliaBLOT® Reagents (Cat. No. WB120). IHC validation was performed using Immunohistochemistry Accessory Kit (Cat. # IHC-101). |
| IHC HUMAN CONTROLS | Bone Marrow-Metastatic Carcinoma, Breast Carcinoma, Metastatic Lymph Node, Ovarian Carcinoma, Prostate Carcinoma |
| IHC MOUSE CONTROLS | Squamous Cell Carcinoma |
| ADDITIONAL INFO | http://www.bethyl.com/product/A300-815A Use the link above to view SDS, a current list of citations, and other product specific information. |

TIF1 Alpha/TRIM24 Antibody : A300-815A



Detection of Human and Mouse TIF1 alpha/TRIM24 by WB (h&m) and Immunoprecipitation (h). *Samples:* Whole cell lysate from HeLa (5, 15 and 50 μ g for WB; 1 mg for IP, 20% of IP loaded), 293T (T; 50 μ g) and mouse NIH3T3 (M; 50 μ g) cells. *Antibodies:* Affinity purified rabbit anti-TIF1 alpha/TRIM24 antibody A300-815A used for WB at 0.04 μ g/ml (A) and 1 μ g/ml (B) and used for IP at 3 μ g/mg lysate (B). TIF1 alpha/TRIM24 was also immunoprecipitated by rabbit anti-TIF1 alpha/TRIM24 antibody A300-816A, which recognizes a downstream epitope. *Detection:* Chemiluminescence with exposure times of 30 seconds (A) and 10 seconds (B).

This antibody is qualified for the Proximity Ligation Assay (PLA). PLA uses paired antibodies, so please refer to the PLA page of our website for specific imaging obtained by pairing this antibody with other qualified antibodies. The above image shows representative results for PLA using three color fluorescence, including DAPI stained nuclei (blue), phalloidin stained cytoplasmic F-actin (green), and PLA positive signal (red).



Detection of Human TIF1 alpha/TRIM24 by Immunohistochemistry. *Sample:* FFPE section of human breast carcinoma. *Antibody:* Affinity purified rabbit anti-TIF1 alpha/TRIM24 (Cat. No. A300-815A Lot1) used at a dilution of 1:1,000 (0.2 μ g/ml). *Detection:* DAB