

# TPR Antibody

Rabbit Polyclonal

Antigen Affinity Purified

Protein ID NP\_003283.1

Catalog No. A300-828A

GeneID 7175

Lot No. A300-828A-1



**APPLICATIONS** WB, IP, IHC, ICC

**SPECIES REACTIVITY** Human

**AMOUNT** 100 µl

**CONCENTRATION** 200 µg/ml

**STORAGE/SHELF LIFE** 2 - 8° C / 1 year from date of receipt

**PHYSICAL STATE** Liquid

**BUFFER** Tris-buffered Saline containing 0.1% BSA and 0.09% Sodium Azide

**ISOTYPE** IgG

**ORIGIN** USA

**PRODUCTION PROCEDURES** Antibody was affinity purified using an epitope specific to TPR immobilized on solid support.

The epitope recognized by A300-828A maps to a region between residue 2300 and the C-terminus (residue 2349) of human Translocated Promoter Region Protein using the numbering given in entry NP\_003283.1 (GeneID 7175).

Immunoglobulin concentration was determined by extinction coefficient: absorbance at 280 nm of 1.4 equals 1.0 mg of IgG.

**APPLICATIONS** Centrifuge tube to remove product from lid. Optimal working dilutions should be determined experimentally by the investigator. Prepare working dilution immediately before use.

Western Blot 1:2,000 - 1:10,000

Immunoprecipitation 2 - 5 µg/mg lysate

Immunohistochemistry 1:50 - 1:500. Epitope retrieval with citrate buffer pH 6.0 is recommended for FFPE tissue sections.

Immunocytochemistry 1:25 - 1:250. Formaldehyde fixation is recommended. Permeabilization with Triton-X 100 is recommended for formaldehyde-fixed cells.

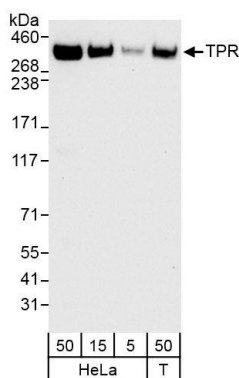
**APPLICATION NOTES** Western blot of immunoprecipitates performed using Normal Pig Serum (Cat. No. S100-020), Goat anti-Rabbit Light Chain HRP Conjugate (Cat. No. A120-113P) and 4-8% SDS-PAGE (link to IP-western blot protocol in Additional Info section below).

**IHC HUMAN CONTROLS** Western blot of lysates performed using standard western blot reagents and 4-8% SDS-PAGE. Breast Carcinoma, Colon Carcinoma, Ovarian Carcinoma, Skin Basal Cell Carcinoma, Testis, HeLa Cells

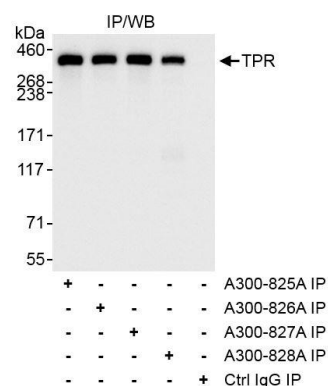
**ADDITIONAL INFO** <https://www.bethyl.com/product/A300-828A>

Use the link above to view SDS, a current list of citations, and other product specific information. IP-western blot protocol [https://www.bethyl.com/content/protocol\\_IP\\_WB](https://www.bethyl.com/content/protocol_IP_WB)

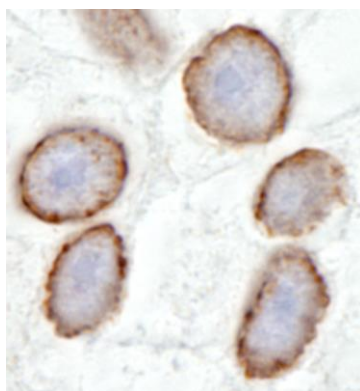
This document certifies that this product has met all of the quality control standards defined by Bethyl Laboratories, Inc.  
Eric McIntush, PhD | Chief Scientific Officer Date: October 17, 2019



**Detection of human TPR by western blot.** *Samples:* Whole cell lysate from HeLa (5, 15 and 50 µg) and HEK293T (T; 50 µg) cells. *Antibodies:* Affinity purified rabbit anti-TPR antibody A300-828A (lot A300-828A-1) used for WB at 0.04 µg/ml. *Detection:* Chemiluminescence with exposure time of 30 seconds.



**Detection of human TPR by western blot of immunoprecipitates.** *Samples:* Whole cell lysate (1 mg for IP, 20% of IP loaded) from HeLa cells. *Antibodies:* Affinity purified rabbit anti-TPR antibody A300-828A (lot A300-828A-1) used for IP at 3 µg/mg lysate. TPR was also immunoprecipitated by rabbit anti-TPR antibodies A300-825A, A300-826A and A300-827A, which recognize other epitopes. For blotting immunoprecipitated TPR, A300-828A was used at 1.0 µg/ml. *Detection:* Chemiluminescence with exposure time of 1 second.



**Detection of human TPR by immunohistochemistry.** *Sample:* FFPE section of human testis. *Antibody:* Affinity purified rabbit anti-TPR (Cat. No. A300-828A Lot1) used at a dilution of 1:100 (2µg/ml). *Detection:* DAB