

RBM9 Antibody

Rabbit Polyclonal

Antigen Affinity Purified

Protein ID NP_055124.1

Catalog No. A300-864A

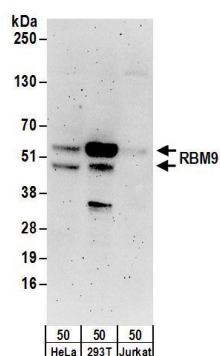
GeneID 23543

Lot No. A300-864A-2

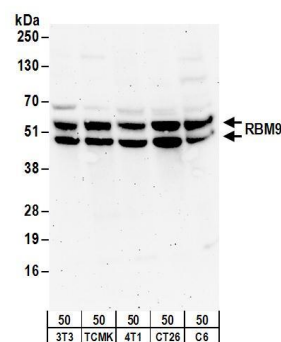


APPLICATIONS	WB, IP, IHC						
SPECIES REACTIVITY	Human, Mouse, Rat						
AMOUNT	100 µl						
CONCENTRATION	1000 µg/ml						
STORAGE/SHELF LIFE	2 - 8° C / 1 year from date of receipt						
PHYSICAL STATE	Liquid						
BUFFER	Tris-citrate/phosphate buffer, pH 7 to 8 containing 0.09% Sodium Azide						
ISOTYPE	IgG						
ORIGIN	USA						
PRODUCTION PROCEDURES	<p>Antibody was affinity purified using an epitope specific to RBM9 immobilized on solid support.</p> <p>The epitope recognized by A300-864A maps to a region between residue 1 and 50 of human RNA Binding Motif Protein 9 using the numbering given in entry NP_055124.1 (GeneID 23543).</p> <p>Immunoglobulin concentration was determined by extinction coefficient: absorbance at 280 nm of 1.4 equals 1.0 mg of IgG.</p>						
APPLICATIONS	<p>Centrifuge tube to remove product from lid. Optimal working dilutions should be determined experimentally by the investigator. Prepare working dilution immediately before use.</p> <table><tr><td>Western Blot</td><td>1:2,000 – 1:10,000</td></tr><tr><td>Immunoprecipitation</td><td>2 – 5 µg/mg lysate</td></tr><tr><td>Immunohistochemistry</td><td>1:500 – 1:2,000. Epitope retrieval with citrate buffer pH 6.0 is recommended for FFPE tissue sections.</td></tr></table>	Western Blot	1:2,000 – 1:10,000	Immunoprecipitation	2 – 5 µg/mg lysate	Immunohistochemistry	1:500 – 1:2,000. Epitope retrieval with citrate buffer pH 6.0 is recommended for FFPE tissue sections.
Western Blot	1:2,000 – 1:10,000						
Immunoprecipitation	2 – 5 µg/mg lysate						
Immunohistochemistry	1:500 – 1:2,000. Epitope retrieval with citrate buffer pH 6.0 is recommended for FFPE tissue sections.						
APPLICATION NOTES	<p>Western blot of immunoprecipitates performed using Normal Pig Serum (Cat. No. S100-020), Goat anti-Rabbit Light Chain HRP Conjugate (Cat. No. A120-113P) and 4-20% SDS-PAGE (link to IP-western blot protocol in Additional Info section below).</p> <p>Western blot of lysates performed using standard western blot reagents and 4-20% SDS-PAGE.</p>						
IHC HUMAN CONTROLS	Breast Carcinoma, Colon Carcinoma, Ovarian Carcinoma, Prostate Carcinoma, Stomach Adenocarcinoma, Testicular Seminoma						
IHC MOUSE CONTROLS	Renal Cell Carcinoma, Teratoma						
ADDITIONAL INFO	<p>https://www.bethyl.com/product/A300-864A</p> <p>Use the link above to view SDS, a current list of citations, and other product specific information. IP-western blot protocol: https://www.bethyl.com/content/protocol_IP_WB</p>						

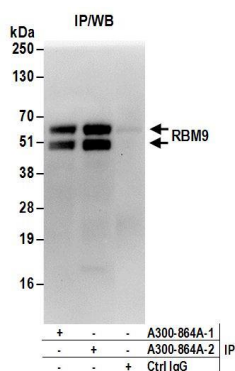
This document certifies that this product has met all of the quality control standards defined by Bethyl Laboratories, Inc.
Eric McIntush, PhD | Chief Scientific Officer Date: June 21, 2019



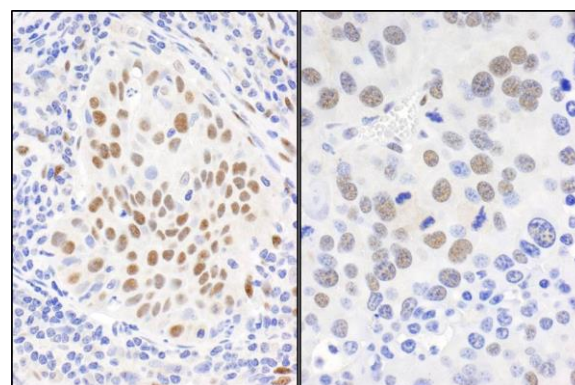
Detection of human RBM9 by western blot. *Samples:* Whole cell lysate (50 μ g) from HeLa, HEK293T, and Jurkat cells. *Antibodies:* Affinity purified rabbit anti-RBM9 antibody A300-864A (lot A300-864A-2) used for WB at 0.1 μ g/ml. *Detection:* Chemiluminescence with an exposure time of 3 minutes.



Detection of mouse and rat RBM9 by western blot. *Samples:* Whole cell lysate (50 μ g) from NIH 3T3, TCMK-1, 4T1, CT26.WT, and rat C6 cells. *Antibodies:* Affinity purified rabbit anti-RBM9 antibody A300-864A (lot A300-864A-2) used for WB at 0.5 μ g/ml. *Detection:* Chemiluminescence with an exposure time of 3 minutes.



Detection of human RBM9 by western blot of immunoprecipitates. *Samples:* Whole cell lysate (1 mg for IP; 20% of IP loaded) from HeLa cells. *Antibodies:* Affinity purified rabbit anti-RBM9 antibody A300-864A (lot A300-864A-2) used for IP at 6 μ g/mg lysate. RBM9 was also immunoprecipitated by a previous lot (lot A300-864A-1) of this antibody. For blotting immunoprecipitated RBM9, A300-864A-2 was used at 1 μ g/ml. *Detection:* Chemiluminescence with an exposure time of 30 seconds.



Detection of human and mouse RBM9 by immunohistochemistry. *Sample:* FFPE sections of human lung carcinoma (left) and mouse renal cell carcinoma (right). *Antibody:* Affinity purified rabbit anti-RBM9 (Cat. No. A300-864A Lot2) used at a dilution of 1:1,000 (1 μ g/ml). *Detection:* DAB