

# PPP3CA Antibody

Rabbit Polyclonal

Antigen Affinity Purified

Catalog No. A300-908A

Lot No. A300-908A-1

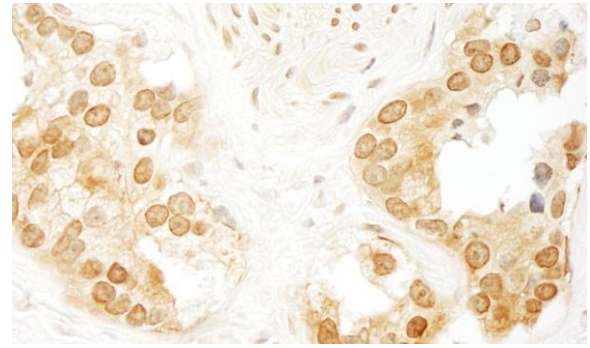
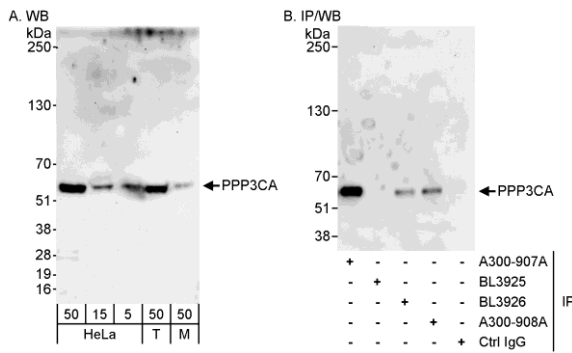
Protein ID NP\_000935.1

Gene ID 5530



<b>APPLICATIONS</b>	WB, IP, IHC-P, IF								
<b>REACTIVITY TESTED</b>	Human, Mouse								
<b>PRESUMED REACTIVITY</b>	Based on 100% sequence identity, this antibody is predicted to react with Rat, <i>X. tropicalis</i> , Chicken, Turkey, Bovine, Dog, Horse, Pig, Panda, Orangutan, Rhesus Monkey, Gorilla, Chimpanzee, Tasmanian devil, White-tufted-ear marmoset, Crab-eating macaque and Northern white-cheeked gibbon.								
<b>ISOTYPE</b>	IgG								
<b>AMOUNT</b>	0.1 ml at 1 mg/ml								
<b>STORAGE/SHELF LIFE</b>	2 - 8° C / 1 year from date of receipt								
<b>PHYSICAL STATE</b>	Liquid								
<b>BUFFER</b>	Tris-citrate/phosphate buffer, pH 7 to 8 containing 0.09% Sodium Azide								
<b>ORIGIN</b>	USA								
<b>PRODUCTION PROCEDURES</b>	<p>Antibody was affinity purified using an epitope specific to PPP3CA immobilized on solid support.</p> <p>The epitope recognized by A300-908A maps to a region between residue 470 and the C-terminus (residue 521) of human Protein Phosphatase 3, Catalytic Subunit, Alpha isoform using the numbering given in entry NP_000935.1 (GeneID 5530).</p> <p>Immunoglobulin concentration was determined by extinction coefficient: absorbance at 280 nm of 1.4 equals 1.0 mg of IgG.</p>								
<b>APPLICATIONS</b>	<p>Centrifuge tube to remove product from lid. Optimal working dilutions should be determined experimentally by the investigator. Prepare working dilution immediately before use.</p> <table><tr><td>Western Blot</td><td>1:2,000 to 1:10,000</td></tr><tr><td>Immunoprecipitation</td><td>2 to 5 µg/mg lysate</td></tr><tr><td>Immunohistochemistry</td><td>1:500 to 1:2,000. Epitope retrieval with Tris-EDTA pH9.0 is recommended for FFPE tissue sections.</td></tr><tr><td>Immunofluorescence</td><td>1:250 to 1:1,000</td></tr></table>	Western Blot	1:2,000 to 1:10,000	Immunoprecipitation	2 to 5 µg/mg lysate	Immunohistochemistry	1:500 to 1:2,000. Epitope retrieval with Tris-EDTA pH9.0 is recommended for FFPE tissue sections.	Immunofluorescence	1:250 to 1:1,000
Western Blot	1:2,000 to 1:10,000								
Immunoprecipitation	2 to 5 µg/mg lysate								
Immunohistochemistry	1:500 to 1:2,000. Epitope retrieval with Tris-EDTA pH9.0 is recommended for FFPE tissue sections.								
Immunofluorescence	1:250 to 1:1,000								
<b>APPLICATION NOTES</b>	<p>Validation by IP/Western Blot was performed using a 4-20% SDS-PAGE gel and ReliaBLOT® Reagents (Cat. No. WB120).</p> <p>IHC validation was performed using Immunohistochemistry Accessory Kit (Cat. # IHC-101). Epitope Retrieval Buffer- High pH Concentrate (Cat. # IHC-101J) was substituted for Epitope Retrieval Buffer - Reduced pH Concentrate.</p>								
<b>IHC HUMAN CONTROLS</b>	Breast Carcinoma, Prostate Carcinoma								
<b>IHC MOUSE CONTROLS</b>	Colon Carcinoma CT26								
<b>ADDITIONAL INFO</b>	<p><a href="http://www.bethyl.com/product/A300-908A">http://www.bethyl.com/product/A300-908A</a></p> <p>Use the link above to view SDS, a current list of citations, and other product specific information.</p>								

# PPP3CA Antibody: A300-908A



**Detection of Human and Mouse PPP3CA by WB (h&m) and Immunoprecipitation (h).** *Samples:* Whole cell lysate from HeLa (5, 15 and 50  $\mu\text{g}$  for WB; 1 mg for IP, 20% of IP loaded), 293T (T; 50  $\mu\text{g}$ ), and mouse NIH3T3 (M; 50  $\mu\text{g}$ ) cells. *Antibodies:* Affinity purified rabbit anti-PPP3CA antibody A300-908A used for WB at 0.1  $\mu\text{g}/\text{ml}$  (A) and 1  $\mu\text{g}/\text{ml}$  (B) and used for IP at 3  $\mu\text{g}/\text{mg}$  lysate (B). PPP3CA was also immunoprecipitated by rabbit anti-PPP3CA antibody A300-907A and BL3926, which recognize upstream epitopes. *Detection:* Chemiluminescence with exposure times of 3 minutes (A) and 30 seconds (B).

**Detection of Human PPP3CA by Immunohistochemistry.** *Sample:* FFPE section of human prostate carcinoma. *Antibody:* Affinity purified rabbit anti-PPP3CA (Cat. No. A300-908A Lot1) used at a dilution of 1:1,000 (1 $\mu\text{g}/\text{ml}$ ). *Detection:* DAB