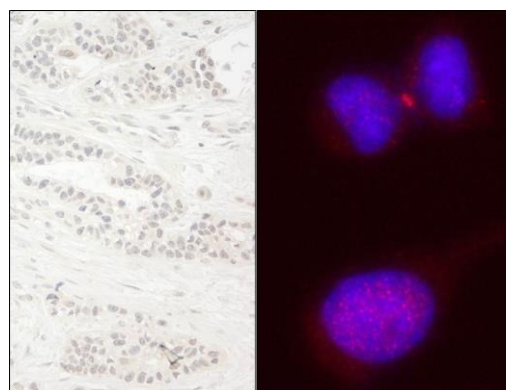


Detection of human KIF14 by western blot and immunoprecipitation. *Samples:* Whole cell lysate from HeLa (5, 15 and 50 μ g for WB; 1 mg for IP, 20% of IP loaded) and HEK293T (T; 50 μ g) cells. *Antibodies:* Affinity purified rabbit anti-KIF14 antibody A300-912A used for WB at 0.04 μ g/ml (A) and 1 μ g/ml (B) and used for IP at 3 μ g/mg lysate (B). KIF14 was also immunoprecipitated by rabbit anti-KIF14 antibodies A300-232A and A300-233A, which recognize upstream epitopes. *Detection:* Chemiluminescence with exposure times of 3 minutes (A) and 10 seconds (B).



Detection of human KIF14 by immunohistochemistry and immunocytochemistry. *Sample:* FFPE section of human breast carcinoma (left) and formaldehyde-fixed HeLa cells (right). *Antibody:* Affinity purified rabbit anti-KIF14 (Cat. No. A300-912A Lot1) used at a dilution of 1:200 (1 μ g/ml) and 1:100 (2 μ g/ml). *Detection:* DAB (left) and red-fluorescent goat anti-rabbit IgG highly cross-adsorbed Antibody used at a dilution of 1:100 (right).