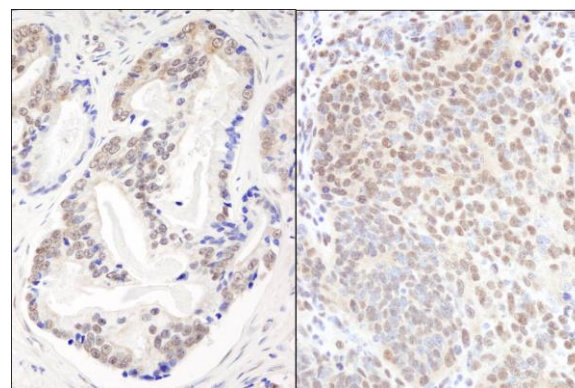


Detection of human and mouse EFTUD2/SNRP116 by western blot (h&m) and immunoprecipitation (h).

Samples: Whole cell lysate from HeLa (5, 15 and 50 µg for WB; 1 mg for IP, 20% of IP loaded), HEK293T (T; 50 µg) and mouse NIH 3T3 (M; 50 µg) cells. **Antibodies:** Affinity purified rabbit anti-EFTUD2/SNRP116 antibody A300-957A used for WB at 0.04 µg/ml (A) and 0.1 µg/ml (B) and used for IP at 3 µg/mg lysate (B). EFTUD2/SNRP116 was also immunoprecipitated by rabbit anti-EFTUD2/SNRP116 antibody BL4213, which recognizes a downstream epitope. **Detection:** Chemiluminescence with exposure times of 10 seconds (A and B).



Detection of human and mouse EFTUD2/SNRP116 by immunohistochemistry. **Sample:** FFPE section of human prostate carcinoma (left) and mouse teratoma (right). **Antibody:** Affinity purified rabbit anti-EFTUD2/SNRP116 (Cat. No. A300-957A Lot1) used at a dilution of 1:200 (1 µg/ml). **Detection:** DAB