

# HRS Antibody

Rabbit Polyclonal

Antigen Affinity Purified Protein ID NP\_004703.1

Catalog No. A300-989A-T GenelD 9146

Lot No. A300-989A-T-2

---

<b>APPLICATIONS</b>	WB, IP
<b>SPECIES REACTIVITY</b>	Human, Mouse
<b>PRESUMED REACTIVITY</b>	Based on 100% sequence identity, this antibody is predicted to react with Bovine
<b>AMOUNT</b>	10 µl
<b>CONCENTRATION</b>	200 µg/ml
<b>STORAGE/SHELF LIFE</b>	2 - 8°C / 1 year from date of receipt
<b>PHYSICAL STATE</b>	Liquid
<b>BUFFER</b>	Tris-buffered Saline containing 0.1% BSA and 0.09% Sodium Azide
<b>ISOTYPE</b>	IgG
<b>ORIGIN</b>	USA
<b>PRODUCTION PROCEDURES</b>	Antibody was affinity purified using an epitope specific to HRS immobilized on solid support.

The epitope recognized by A300-989A-T maps to a region between residue 727 and the C-terminus (residue 777) of human growth factor-regulated tyrosine kinase substrate using the numbering given in entry NP\_004703.1 (GeneID 9146).

**APPLICATIONS** Centrifuge tube to remove product from lid. Optimal working dilutions should be determined experimentally by the investigator. Prepare working dilution immediately before use.

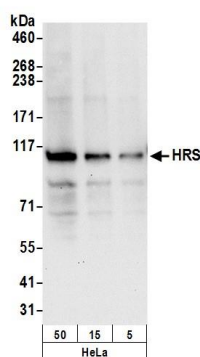
Western Blot 1:2,000 - 1:10,000

Immunoprecipitation 2 - 10 µg/mg lysate

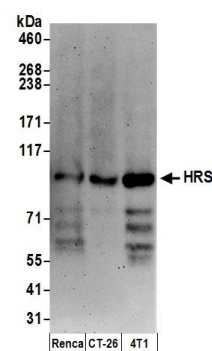
**ADDITIONAL INFO** <https://www.bethyl.com/product/A300-989A-T>

Use the link above to view SDS, a current list of citations, and other product specific information.  
IP-western blot protocol: [https://www.bethyl.com/content/protocol\\_IP\\_WB](https://www.bethyl.com/content/protocol_IP_WB)

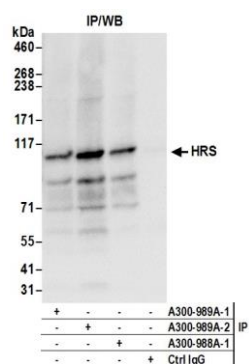
This document certifies that this product has met all of the quality control standards defined by Bethyl Laboratories, Inc.  
Michael Spencer, PhD Date: June 6, 2022



**Detection of human HRS by western blot.** *Samples:* Whole cell lysate (50, 15, 5  $\mu$ g) from HeLa cells prepared using NETN lysis buffer. *Antibody:* Affinity purified rabbit anti-HRS antibody A300-989A (lot A300-989A-2) used for WB at 0.1  $\mu$ g/ml. *Detection:* Chemiluminescence with an exposure time of 10 seconds.



**Detection of mouse HRS by western blot.** *Samples:* Whole cell lysate (15  $\mu$ g) from Renca, CT26.WT and 4T1 cells prepared using NETN lysis buffer. *Antibody:* Affinity purified rabbit anti-HRS antibody A300-989A (lot A300-989A-2) used for WB at 0.1  $\mu$ g/ml. *Detection:* Chemiluminescence with an exposure time of 3 minutes.



**Detection of human HRS by western blot of immunoprecipitates.** *Samples:* Whole cell lysate (0.5 or 1.0 mg per IP reaction; 20% of IP loaded) from HeLa cells prepared using NETN lysis buffer. *Antibodies:* Affinity purified rabbit anti-HRS antibody A300-989A (lot A300-989A-2) used for IP at 6  $\mu$ g per reaction. HRS was also immunoprecipitated by a previous lot of this antibody (A300-989A-1) and rabbit anti-HRS antibody A300-988A. For blotting immunoprecipitated HRS, A300-989A was used at 0.4  $\mu$ g/ml. *Detection:* Chemiluminescence with an exposure time of 3 seconds.