

APC5 Antibody

Rabbit Polyclonal

Antigen Affinity Purified

Catalog No. A301-026A

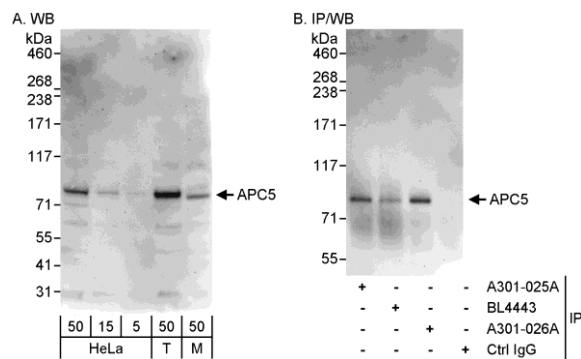
Lot No. A301-026A-1

Protein ID NP_057321.2

Gene ID 51433



APPLICATIONS	WB, IP				
REACTIVITY TESTED	Human, Mouse				
PRESUMED REACTIVITY	Based on 100% sequence identity, this antibody is predicted to react with Rat, Dog, Horse, Rabbit, Guinea pig_10141, Panda, Orangutan, Rhesus Monkey, Gorilla, Chimpanzee, Crab-eating macaque, African elephant, Naked mole rat, Thirteen-lined ground squirrel and Northern white-cheeked gibbon.				
ISOTYPE	IgG				
AMOUNT	0.1 ml at 1 mg/ml				
STORAGE/SHELF LIFE	2 - 8° C / 1 year from date of receipt				
PHYSICAL STATE	Liquid				
BUFFER	Tris-citrate/phosphate buffer, pH 7 to 8 containing 0.09% Sodium Azide				
ORIGIN	USA				
PRODUCTION PROCEDURES	<p>Antibody was affinity purified using an epitope specific to APC5 immobilized on solid support.</p> <p>The epitope recognized by A301-026A maps to a region between residue 705 and the C-terminus (residue 755) of human anaphase promoting complex subunit 5 using the numbering given in entry NP_057321.2 (GeneID 51433).</p> <p>Immunoglobulin concentration was determined by extinction coefficient: absorbance at 280 nm of 1.4 equals 1.0 mg of IgG.</p>				
APPLICATIONS	<p>Centrifuge tube to remove product from lid. Optimal working dilutions should be determined experimentally by the investigator. Prepare working dilution immediately before use.</p> <table><tr><td>Western Blot</td><td>1:500 to 1:2,500</td></tr><tr><td>Immunoprecipitation</td><td>2 to 5 µg/mg lysate</td></tr></table>	Western Blot	1:500 to 1:2,500	Immunoprecipitation	2 to 5 µg/mg lysate
Western Blot	1:500 to 1:2,500				
Immunoprecipitation	2 to 5 µg/mg lysate				
APPLICATION NOTES	Validation by IP/Western Blot was performed using a 4-8% SDS-PAGE gel and ReliaBLOT® Reagents (Cat. No. WB120).				
ADDITIONAL INFO	<p>http://www.bethyl.com/product/A301-026A</p> <p>Use the link above to view SDS, a current list of citations, and other product specific information.</p>				



Detection of Human and Mouse APC5 by Western Blot (h&m) and Immunoprecipitation (h). *Samples:* Whole cell lysate from HeLa (5, 15 and 50 μ g for WB; 1 mg for IP, 20% of IP loaded), 293T (T; 50 μ g) and mouse NIH3T3 (M; 50 μ g) cells. *Antibodies:* Affinity purified rabbit anti-APC5 antibody A301-026A used for WB at 0.4 μ g/ml (A) and 1 μ g/ml (B), and used for IP at 3 μ g/mg lysate. APC5 was also immunoprecipitated by rabbit anti-APC5 antibodies A301-025A and BL4443, which recognize upstream epitopes. *Detection:* Chemiluminescence with exposure times of 3 minutes (A) and 1 minute (B).