

ZNF265/ZIS Antibody

Rabbit Polyclonal

Antigen Affinity Purified

Protein ID NP_005446.2

Catalog No. A301-029A

GeneID 9406

Lot No. A301-029A-1



APPLICATIONS	WB, IP
SPECIES REACTIVITY	Human
PRESUMED REACTIVITY	Based on 100% sequence identity, this antibody is predicted to react with Mouse, Rat, Chicken, Pig and Orangutan
AMOUNT	100 µl
CONCENTRATION	1000 µg/ml
STORAGE/SHELF LIFE	2 - 8° C / 1 year from date of receipt
PHYSICAL STATE	Liquid
BUFFER	Tris-citrate/phosphate buffer, pH 7 to 8 containing 0.09% Sodium Azide
ISOTYPE	IgG
ORIGIN	USA
PRODUCTION PROCEDURES	Antibody was affinity purified using an epitope specific to ZNF265/ZIS immobilized on solid support.

The epitope recognized by A301-029A maps to a region between residue 100 and 150 of human zinc-finger protein 265 (zinc-finger, splicing) using the numbering given in entry NP_005446.2 (GeneID 9406).

Immunoglobulin concentration was determined by extinction coefficient: absorbance at 280 nm of 1.4 equals 1.0 mg of IgG.

APPLICATIONS Centrifuge tube to remove product from lid. Optimal working dilutions should be determined experimentally by the investigator. Prepare working dilution immediately before use.

Western Blot 1:2,000 – 1:10,000

Immunoprecipitation 2 – 5 µg/mg lysate

APPLICATION NOTES Western blot of immunoprecipitates performed using Normal Pig Serum (Cat. No. S100-020), Goat anti-Rabbit Light Chain HRP Conjugate (Cat. No. A120-113P) and 4-20% SDS-PAGE (link to IP-western blot protocol in Additional Info section below).

Western blot of lysates performed using standard western blot reagents and 4-20% SDS-PAGE.

ADDITIONAL INFO <https://www.bethyl.com/product/A301-029A>

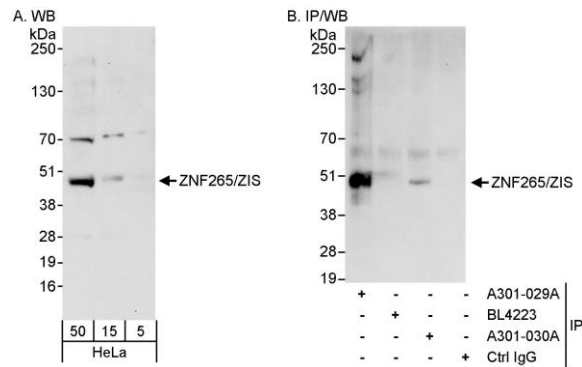
Use the link above to view SDS, a current list of citations, and other product specific information.

IP-western blot protocol: https://www.bethyl.com/content/protocol_IP_WB

This document certifies that this product has met all of the quality control standards defined by Bethyl Laboratories, Inc.

Eric McIntush, PhD | Chief Scientific Officer

Date: June 21, 2019



Detection of human ZNF265/ZIS by western blot and immunoprecipitation. *Samples:* Whole cell lysate (5, 15 and 50 μg for WB; 1 mg for IP, 20% of IP loaded) from HeLa cells. *Antibodies:* Affinity purified rabbit anti-ZNF265/ZIS antibody A301-029A used for WB at 0.1 $\mu\text{g}/\text{ml}$ (A) and 1 $\mu\text{g}/\text{ml}$ (B) and used for IP at 3 $\mu\text{g}/\text{mg}$ lysate. Trace amounts of ZNF265/ZIS were also immunoprecipitated by rabbit anti-ZNF265/ZIS antibody A301-030A, which recognizes a downstream epitope. *Detection:* Chemiluminescence with exposure times of 30 seconds (A) and 10 seconds (B).