

ATRX Antibody

Rabbit Polyclonal

Antigen Affinity Purified

Protein ID NP_000480.2

Catalog No. A301-045A

GeneID 546

Lot No. A301-045A-2



APPLICATIONS WB, IP, IHC, PLA

SPECIES REACTIVITY Human

PRESUMED REACTIVITY Based on 100% sequence identity, this antibody is predicted to react with Chimpanzee

ISOTYPE IgG

AMOUNT 100 µl at 1 mg/ml

STORAGE/SHELF LIFE 2 - 8° C / 1 year from date of receipt

PHYSICAL STATE Liquid

BUFFER Tris-citrate/phosphate buffer, pH 7 to 8 containing 0.09% Sodium Azide

ORIGIN USA

PRODUCTION PROCEDURES Antibody was affinity purified using an epitope specific to ATRX immobilized on solid support. The epitope recognized by A301-045A maps to a region between residue 2442 and the C-terminus (residue 2492) of human alpha thalassemia/mental retardation syndrome X-linked using the numbering given in entry NP_000480.2 (GeneID 546).

Immunoglobulin concentration was determined by extinction coefficient: absorbance at 280 nm of 1.4 equals 1.0 mg of IgG.

APPLICATIONS Centrifuge tube to remove product from lid. Optimal working dilutions should be determined experimentally by the investigator. Prepare working dilution immediately before use.

Western Blot 1:1,000 - 1:5,000

Immunoprecipitation 2 - 10 µg/mg lysate

Immunohistochemistry 1:500 - 1:2,000. Epitope retrieval with citrate buffer pH 6.0 is recommended for FFPE tissue sections.

Proximity Ligation Assay 1:1,000 - 1:20,000

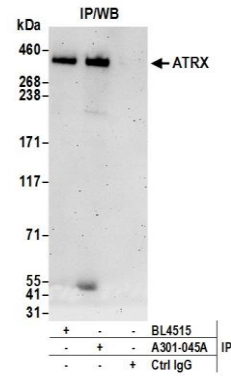
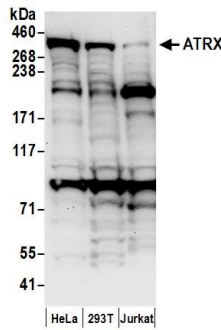
APPLICATION NOTES Western blot of immunoprecipitates performed using ReliaBLOT® Reagents (Cat. No. WB120) and 4-8% SDS-PAGE.

Western blot of lysates performed using standard western blot reagents and 4-8% SDS-PAGE.

IHC HUMAN CONTROLS Breast Carcinoma, Lung Cancer, Prostate Carcinoma, Skin Basal Cell Carcinoma

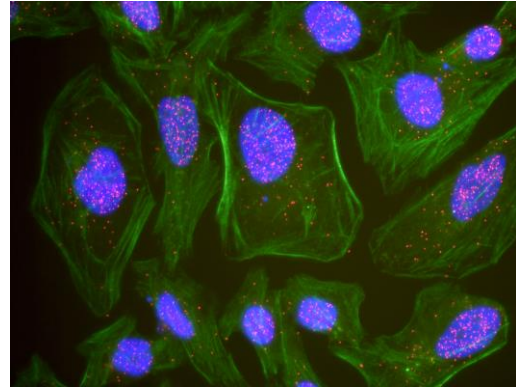
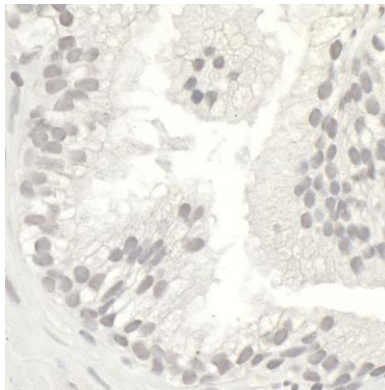
ADDITIONAL INFO <http://www.bethyl.com/product/A301-045A>

Use the link above to view SDS, a current list of citations, and other product specific information.



Detection of human ATRX by western blot. *Samples:* Whole cell lysate (50 µg) from HeLa, 293T, and Jurkat cells prepared using NETN lysis buffer. *Antibodies:* Affinity purified rabbit anti-ATRX antibody A301-045A (lot A301-045A-2) used for WB at 0.4 µg/ml. *Detection:* Chemiluminescence with an exposure time of 30 seconds.

Detection of human ATRX by western blot of immunoprecipitates. *Samples:* Whole cell lysate (0.5 or 1.0 mg per IP reaction; 20% of IP loaded) from HeLa cells prepared using NETN lysis buffer. *Antibodies:* Affinity purified rabbit anti-ATRX antibody A301-045A (lot A301-045A-2) used for IP at 6 µg per reaction. ATRX was also immunoprecipitated by rabbit anti-ATRX antibody BL4515. For blotting immunoprecipitated ATRX, A301-045A was used at 1 µg/ml. *Detection:* Chemiluminescence with an exposure time of 3 minutes.



Detection of human ATRX by immunohistochemistry. *Sample:* FFPE section of human prostate carcinoma. *Antibody:* Affinity purified rabbit anti-ATRX (Cat. No. A301-045A Lot2) used at a dilution of 1:1,000 (1µg/ml). *Detection:* DAB

This antibody is qualified for the Proximity Ligation Assay (PLA). The above image shows representative results for PLA using three color fluorescence, including DAPI stained nuclei (blue), phalloidin stained cytoplasmic F-actin (green), and PLA positive signal (red).