

ATRX Antibody

Rabbit Polyclonal

Antigen Affinity Purified

Protein ID NP_000480.2

Catalog No. A301-045A-T

GeneID 546

Lot No. A301-045A-T-4

APPLICATIONS	WB, IP, IHC
SPECIES REACTIVITY	Human
PRESUMED REACTIVITY	Based on 100% sequence identity, this antibody is predicted to react with Chimpanzee
AMOUNT	10 µl
CONCENTRATION	1000 µg/ml
STORAGE/SHELF LIFE	2 - 8°C / 1 year from date of receipt
PHYSICAL STATE	Liquid
BUFFER	Tris-citrate/phosphate buffer, pH 7 to 8 containing 0.09% Sodium Azide
ISOTYPE	IgG
ORIGIN	USA
PRODUCTION PROCEDURES	Antibody was affinity purified using an epitope specific to ATRX immobilized on solid support.

The epitope recognized by A301-045A-T maps to a region between residue 2442 and the C-terminus (residue 2492) of human alpha thalassemia/mental retardation syndrome X-linked using the numbering given in entry NP_000480.2 (GeneID 546).

APPLICATIONS Centrifuge tube to remove product from lid. Optimal working dilutions should be determined experimentally by the investigator. Prepare working dilution immediately before use.

Western Blot 1:2,000 - 1:10,000

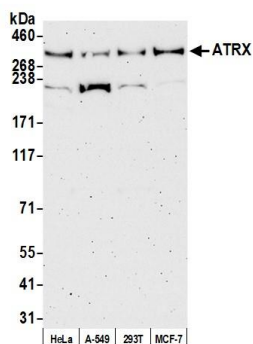
Immunoprecipitation 2 - 10 µg/mg lysate

Immunohistochemistry 1:500 - 1:2,000. Epitope retrieval with citrate buffer pH6.0 is recommended for FFPE tissue sections.

ADDITIONAL INFO <https://www.fortislife.com/p/A301-045A-T>

Use the link above to view SDS, a current list of citations, and other product specific information.

This document certifies that this product has met all of the quality control standards defined by Bethyl Laboratories, Inc.
Michael Spencer, PhD Date: August 8, 2022



Detection of human ATR_X by western blot. *Samples:* Whole cell lysate (50 µg) from HeLa, A-549, HEK293T, and MCF-7 cells prepared using NETN lysis buffer. *Antibody:* Affinity purified rabbit anti-ATR_X antibody A301-045A-T (lot A301-045A-T-4) used for WB at 1:1000. *Detection:* Chemiluminescence with an exposure time of 3 minutes.