

DDX46 Antibody

Rabbit Polyclonal

Antigen Affinity Purified Protein ID NP_055644.2

Catalog No. A301-052A-M GeneID 9879

Lot No. A301-052A-M-1



APPLICATIONS	WB, IP, IHC
SPECIES REACTIVITY	Human, Mouse
PRESUMED REACTIVITY	Based on 100% sequence identity, this antibody is predicted to react with Rat and Orangutan
AMOUNT	100 µl (10 blots)
CONCENTRATION	40 µg/ml
STORAGE/SHELF LIFE	2 - 8° C / 1 year from date of receipt
PHYSICAL STATE	Liquid
BUFFER	Tris-buffered Saline containing 0.1% BSA and 0.09% Sodium Azide
ISOTYPE	IgG
ORIGIN	USA
PRODUCTION PROCEDURES	Antibody was affinity purified using an epitope specific to DDX46 immobilized on solid support.

The epitope recognized by A301-052A-M maps to a region between residue 981 and the C-terminus (residue 1031) of human DEAD (Asp-Glu-Ala-Asp) box polypeptide 46 using the numbering given in entry NP_055644.2 (GeneID 9879).

APPLICATIONS Centrifuge tube to remove product from lid. Optimal working dilutions should be determined experimentally by the investigator. Prepare working dilution immediately before use.

Western Blot 1:1000

Immunoprecipitation The antibody contained within A301-052A-M has been qualified for use in immunoprecipitation; however, we recommend using the alternative formulation of this antibody found as product A301-052A.

Immunohistochemistry 1:20 - 1:100. Epitope retrieval with citrate buffer pH 6.0 is recommended for FFPE tissue sections.

APPLICATION NOTES Western blot of immunoprecipitates performed using Normal Pig Serum (Cat. No. S100-020), Goat anti-Rabbit Light Chain HRP Conjugate (Cat. No. A120-113P) and 4-8% SDS-PAGE (link to IP-western blot protocol in Additional Info section below).

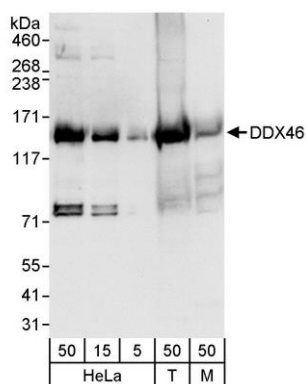
Western blot of lysates performed using standard western blot reagents and 4-8% SDS-PAGE.

ADDITIONAL INFO <https://www.bethyl.com/product/A301-052A-M>

Use the link above to view SDS, a current list of citations, and other product specific information.

IP-western blot protocol: https://www.bethyl.com/content/protocol_IP_WB

This document certifies that this product has met all of the quality control standards defined by Bethyl Laboratories, Inc.
Eric McIntush, PhD | Chief Scientific Officer Date: June 21, 2019

**Detection of human and mouse DDX46 by western blot.**

Samples: Whole cell lysate from HeLa (5, 15, and 50 µg), HEK293T (T; 50 µg) and mouse NIH 3T3 (M; 50 µg) cells.

Antibody: Affinity purified rabbit anti-DDX46 antibody A301-052A-M used at 1:1000. *Detection:*

Chemiluminescence with an exposure time of 10 seconds.