

# CHD4 Antibody

Rabbit Polyclonal

Antigen Affinity Purified

Protein ID NP\_001264.2

Catalog No. A301-083A

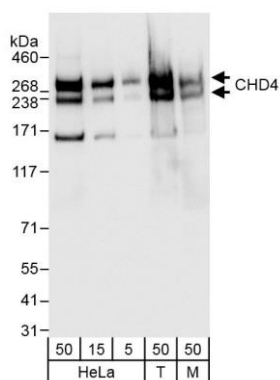
GeneID 1108

Lot No. A301-083A-1



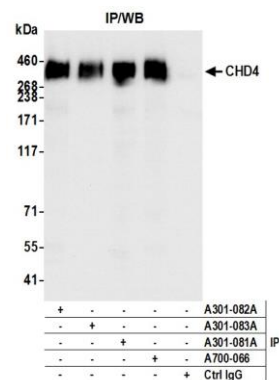
|                              |  |
|------------------------------|--|
| <b>APPLICATIONS</b>          | WB, IP   |
| <b>SPECIES REACTIVITY</b>    | Human, Mouse   |
| <b>AMOUNT</b>                | 100 µl   |
| <b>CONCENTRATION</b>         | 200 µg/ml  |
| <b>STORAGE/SHELF LIFE</b>    | 2 - 8° C / 1 year from date of receipt   |
| <b>PHYSICAL STATE</b>        | Liquid   |
| <b>BUFFER</b>                | Tris-buffered Saline containing 0.1% BSA and 0.09% Sodium Azide  |
| <b>ISOTYPE</b>               | IgG  |
| <b>ORIGIN</b>                | USA  |
| <b>PRODUCTION PROCEDURES</b> | <p>Antibody was affinity purified using an epitope specific to CHD4 immobilized on solid support.</p> <p>The epitope recognized by A301-083A maps to a region between residue 1625 and 1675 of human chromodomain helicase DNA binding protein 4 (Mi2 autoantigen 218 kDa protein) using the numbering given in entry NP_001264.2 (GeneID 1108).</p> <p>Immunoglobulin concentration was determined by extinction coefficient: absorbance at 280 nm of 1.4 equals 1.0 mg of IgG.</p> |
| <b>APPLICATIONS</b>          | <p>Centrifuge tube to remove product from lid. Optimal working dilutions should be determined experimentally by the investigator. Prepare working dilution immediately before use.</p> <p>Western Blot                      1:2,000 - 1:10,000</p> <p>Immunoprecipitation          2 - 10 µg/mg lysate</p>   |
| <b>APPLICATION NOTES</b>     | <p>Western blot of immunoprecipitates performed using Normal Pig Serum (Cat. No. S100-020), Goat anti-Rabbit Light Chain HRP Conjugate (Cat. No. A120-113P) and 4-8% SDS-PAGE (link to IP-western blot protocol in Additional Info section below).</p> <p>Western blot of lysates performed using standard western blot reagents and 4-8% SDS-PAGE.</p>  |
| <b>ADDITIONAL INFO</b>       | <p><a href="https://www.bethyl.com/product/A301-083A">https://www.bethyl.com/product/A301-083A</a></p> <p>Use the link above to view SDS, a current list of citations, and other product specific information. IP-western blot protocol: <a href="https://www.bethyl.com/content/protocol_IP_WB">https://www.bethyl.com/content/protocol_IP_WB</a></p>   |

This document certifies that this product has met all of the quality control standards defined by Bethyl Laboratories, Inc.  
Eric McIntush, PhD | Chief Scientific Officer Date: June 21, 2019



**Detection of human and mouse CHD4 by western blot.**

*Samples:* Whole cell lysate from HeLa (5, 15 and 50 µg, HEK293T (T; 50 µg) and mouse NIH 3T3 (M; 50 µg) cells.  
*Antibodies:* Affinity purified rabbit anti-CHD4 antibody A301-083A (lot A301-083A-1) used at 0.04 µg/ml.  
*Detection:* Chemiluminescence with exposure times of 3 seconds.



**Detection of human CHD4 by western blot of immunoprecipitates.**

*Samples:* Whole cell lysate (1.0 mg per IP reaction; 20% of IP loaded) from HeLa cells.  
*Antibodies:* Affinity purified rabbit anti-CHD4 antibody A301-083A (lot A301-083A-1) used for IP at 6 µg per reaction. CHD4 was also immunoprecipitated by rabbit anti-CHD4 antibodies (A301-081A, A301-082A), and rabbit anti-CHD4 recombinant monoclonal antibody [BLR066G] (A700-066). For blotting immunoprecipitated CHD4, A700-066 was used at 1:1000. *Detection:* Chemiluminescence with an exposure time of 1 second.