

XRN2 Antibody

Rabbit Polyclonal

Antigen Affinity Purified

Protein ID NP_036387.2

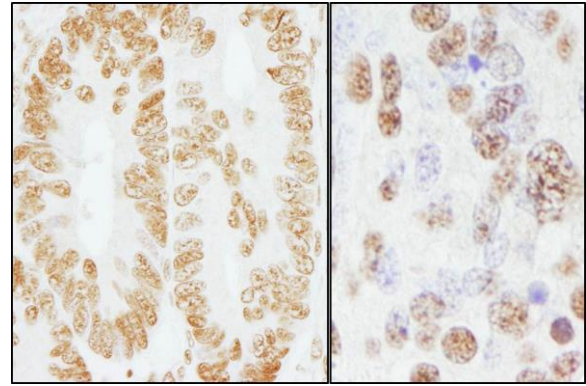
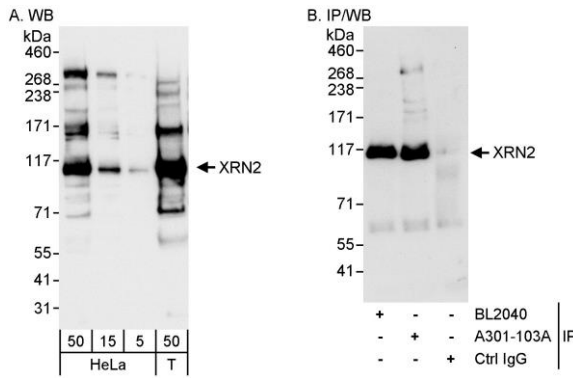
Catalog No. A301-103A

GeneID 22803

Lot No. A301-103A-1

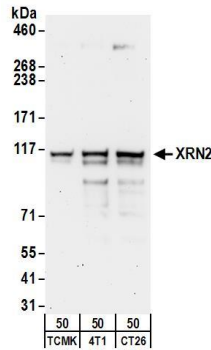


APPLICATIONS	WB, IP, IHC						
SPECIES REACTIVITY	Human, Mouse						
ISOTYPE	IgG						
AMOUNT	100 µl at 0.2 mg/ml						
STORAGE/SHELF LIFE	2 - 8° C / 1 year from date of receipt						
PHYSICAL STATE	Liquid						
BUFFER	Tris-buffered Saline containing 0.1% BSA and 0.09% Sodium Azide						
ORIGIN	USA						
PRODUCTION PROCEDURES	<p>Antibody was affinity purified using an epitope specific to XRN2 immobilized on solid support.</p> <p>The epitope recognized by A301-103A maps to a region between residue 900 and 950 human 5'-3' exoribonuclease 2 using the numbering given in entry NP_036387.2 (GeneID 22803).</p> <p>Immunoglobulin concentration was determined by extinction coefficient: absorbance at 280 nm of 1.4 equals 1.0 mg of IgG.</p>						
APPLICATIONS	<p>Centrifuge tube to remove product from lid. Optimal working dilutions should be determined experimentally by the investigator. Prepare working dilution immediately before use.</p> <table><tr><td>Western Blot</td><td>1:2,000 - 1:10,000</td></tr><tr><td>Immunoprecipitation</td><td>2 - 5 µg/mg lysate</td></tr><tr><td>Immunohistochemistry</td><td>1:100 - 1:500. Epitope retrieval with citrate buffer pH 6.0 is recommended for FFPE tissue sections.</td></tr></table>	Western Blot	1:2,000 - 1:10,000	Immunoprecipitation	2 - 5 µg/mg lysate	Immunohistochemistry	1:100 - 1:500. Epitope retrieval with citrate buffer pH 6.0 is recommended for FFPE tissue sections.
Western Blot	1:2,000 - 1:10,000						
Immunoprecipitation	2 - 5 µg/mg lysate						
Immunohistochemistry	1:100 - 1:500. Epitope retrieval with citrate buffer pH 6.0 is recommended for FFPE tissue sections.						
APPLICATION NOTES	<p>Western blot of immunoprecipitates performed using ReliaBLOT® Reagents (Cat. No. WB120) and 4-8% SDS-PAGE.</p> <p>Western blot of lysates performed using standard western blot reagents and 4-8% SDS-PAGE.</p>						
IHC HUMAN CONTROLS	Breast Carcinoma, Colon Carcinoma, Ovarian Carcinoma, Stomach Adenocarcinoma, Testicular Seminoma						
ADDITIONAL INFO	<p>http://www.bethyl.com/product/A301-103A</p> <p>Use the link above to view SDS, a current list of citations, and other product specific information.</p>						



Detection of human XRN2 by western blot and immunoprecipitation. *Samples:* Whole cell lysate from HeLa (5, 15 and 50 µg for WB; 1 mg for IP, 20% of IP loaded) and 293T (T; 50 µg) cells. *Antibodies:* Affinity purified rabbit anti-XRN2 antibody A301-103A used for WB at 0.04 µg/ml (A) and 1 µg/ml (B) and used for IP at 3 µg/mg lysate. XRN2 was also immunoprecipitated by rabbit anti-XRN2 antibody BL2040, which recognizes an upstream epitope. *Detection:* Chemiluminescence with exposure times of 3 seconds (A) and 10 seconds (B).

Detection of human and mouse XRN2 by immunohistochemistry. *Sample:* FFPE sections of human colon carcinoma (left) and mouse teratoma (right). *Antibody:* Affinity purified rabbit anti-XRN2 (Cat. No. A301-103A Lot1) used at a dilution of 1:200 (1 µg/ml). *Detection:* DAB



Detection of mouse XRN2 by western blot. *Samples:* Whole cell lysate (50 µg) from TCMK-1, 4T1, and CT26.WT cells. *Antibodies:* Affinity purified rabbit anti-XRN2 antibody A301-103A (lot A301-103A-1) used for WB at 0.4 µg/ml. *Detection:* Chemiluminescence with an exposure time of 3 minutes.