

eIF4E Antibody

Rabbit Polyclonal

Antigen Affinity Purified

Protein ID NP_001959.1

Catalog No. A301-154A-T

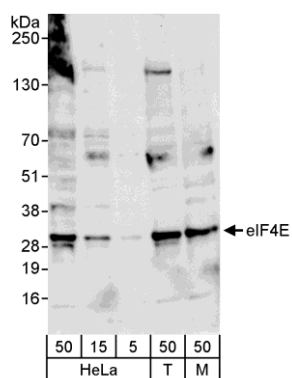
Gene ID 1977

Lot No. A301-154A-T-1



APPLICATIONS	WB, IP
REACTIVITY TESTED	Human, Mouse
PRESUMED REACTIVITY	Based on 100% sequence identity, this antibody is predicted to react with Rat, <i>X. laevis</i> , <i>X. tropicalis</i> , Chicken, Turkey, Bovine, Dog, Horse, Rabbit, Guinea pig_10141, Pig, Panda, Orangutan, Rhesus Monkey, Chimpanzee, West Indian ocean coelacanth, Pipidae and Northern white-cheeked gibbon.
ISOTYPE	IgG
AMOUNT	20 µl (2 blots)
STORAGE/SHELF LIFE	2 - 8° C / 1 year from date of receipt
PHYSICAL STATE	Liquid
BUFFER	Tris-buffered Saline with 0.1% BSA containing 0.09% Sodium Azide
ORIGIN	USA
PRODUCTION PROCEDURES	Antibody was affinity purified using an epitope specific to eIF4E immobilized on solid support. The epitope recognized by A301-154A-T maps to a region between residue 167 and 217 of human eukaryotic translation initiation factor 4E using the numbering given in entry NP_001959.1 (GeneID 1977).
APPLICATIONS	Centrifuge tube to remove product from lid. Optimal working dilutions should be determined experimentally by the investigator. Prepare working dilution immediately before use. Western Blot 1:1000 Immunoprecipitation The antibody contained within A301-154A-T has been qualified for use in immunoprecipitation; however, we recommend using the alternative formulation of this antibody found as product A301-154A.
APPLICATION NOTES	Validation by IP/Western Blot was performed using a 4-20% SDS-PAGE gel and ReliaBLOT® Reagents (Cat. No. WB120).
ADDITIONAL INFO	http://www.bethyl.com/product/A301-154A-T Use the link above to view SDS, a current list of citations, and other product specific information.

eIF4E Antibody: A301-154A-T



Detection of Human and Mouse eIF4E by Western Blot.

Samples: Whole cell lysate from HeLa (5, 15, and 50 μ g), 293T (T; 50 μ g) and mouse NIH3T3 (M; 50 μ g) cells. **Antibody:** Affinity purified rabbit anti-eIF4E antibody A301-154A-T used at 1:1000. **Detection:** Chemiluminescence with an exposure time of 10 seconds.