

IRS1 Antibody

Rabbit Polyclonal

Antigen Affinity Purified

Protein ID NP_005535.1

Catalog No. A301-157A

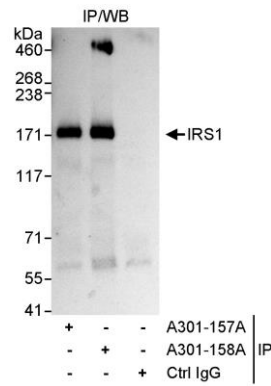
GeneID 3667

Lot No. A301-157A-1



APPLICATIONS	IP
SPECIES REACTIVITY	Human
PRESUMED REACTIVITY	Based on 100% sequence identity, this antibody is predicted to react with Mouse and Rat
AMOUNT	100 µl
CONCENTRATION	1000 µg/ml
STORAGE/SHELF LIFE	2 - 8° C / 1 year from date of receipt
PHYSICAL STATE	Liquid
BUFFER	Tris-citrate/phosphate buffer, pH 7 to 8 containing 0.09% Sodium Azide
ISOTYPE	IgG
ORIGIN	USA
PRODUCTION PROCEDURES	<p>Antibody was affinity purified using an epitope specific to IRS1 immobilized on solid support.</p> <p>The epitope recognized by A301-157A maps to a region between residue 750 and 800 of human insulin receptor substrate 1 using the numbering given in entry NP_005535.1 (GeneID 3667).</p> <p>Immunoglobulin concentration was determined by extinction coefficient: absorbance at 280 nm of 1.4 equals 1.0 mg of IgG.</p>
APPLICATIONS	<p>Centrifuge tube to remove product from lid. Optimal working dilutions should be determined experimentally by the investigator. Prepare working dilution immediately before use.</p> <p>Western Blot Not recommended. Use rabbit anti-IRS1 antibody A301-158A.</p> <p>Immunoprecipitation 2 - 5 µg/mg lysate</p>
APPLICATION NOTES	Western blot of immunoprecipitates performed using Normal Pig Serum (Cat. No. S100-020), Goat anti-Rabbit Light Chain HRP Conjugate (Cat. No. A120-113P) and 4-8% SDS-PAGE (link to IP-western blot protocol in Additional Info section below).
ADDITIONAL INFO	<p>https://www.bethyl.com/product/A301-157A</p> <p>Use the link above to view SDS, a current list of citations, and other product specific information.</p> <p>IP-western blot protocol: https://www.bethyl.com/content/protocol_IP_WB</p>

This document certifies that this product has met all of the quality control standards defined by Bethyl Laboratories, Inc.
Eric McIntush, PhD | Chief Scientific Officer Date: June 21, 2019



Detection of human IRS1 by western blot of immunoprecipitates. *Samples:* Whole cell lysate (1 mg for IP, 20% of IP loaded) from HeLa cells. *Antibodies:* Affinity purified rabbit anti-IRS1 antibody A301-157A used for IP at 3 $\mu\text{g}/\text{mg}$ lysate. IRS1 was also immunoprecipitated by rabbit anti-IRS1 antibody A301-158A, which recognizes a downstream epitope. For blotting immunoprecipitated IRS1, A301-158A was used at 1 $\mu\text{g}/\text{ml}$. *Detection:* Chemiluminescence with an exposure time of 10 seconds.