

BRF1 Antibody

Rabbit Polyclonal

Antigen Affinity Purified

Protein ID NP_001510.2

Catalog No. A301-228A

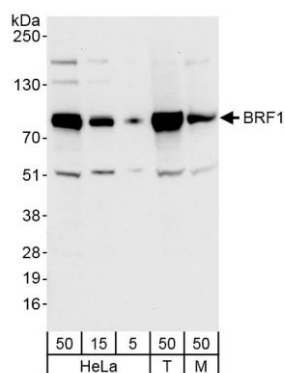
GeneID 2972

Lot No. A301-228A-1



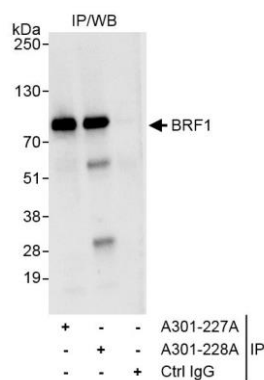
APPLICATIONS	WB, IP, IHC						
SPECIES REACTIVITY	Human, Mouse						
AMOUNT	100 µl						
CONCENTRATION	200 µg/ml						
STORAGE/SHELF LIFE	2 – 8° C / 1 year from date of receipt						
PHYSICAL STATE	Liquid						
BUFFER	Tris-buffered Saline containing 0.1% BSA and 0.09% Sodium Azide						
ISOTYPE	IgG						
ORIGIN	USA						
PRODUCTION PROCEDURES	<p>Antibody was affinity purified using an epitope specific to BRF1 immobilized on solid support.</p> <p>The epitope recognized by A301-228A maps to a region between residue 627 and 677 of human B – related factor 1 using the numbering given in entry NP_001510.2 (GeneID 2972).</p> <p>Immunoglobulin concentration was determined by extinction coefficient: absorbance at 280 nm of 1.4 equals 1.0 mg of IgG.</p>						
APPLICATIONS	<p>Centrifuge tube to remove product from lid. Optimal working dilutions should be determined experimentally by the investigator. Prepare working dilution immediately before use.</p> <table><tr><td>Western Blot</td><td>1:2,000 – 1:10,000</td></tr><tr><td>Immunoprecipitation</td><td>2 – 5 µg/mg lysate</td></tr><tr><td>Immunohistochemistry</td><td>1:200 – 1:1,000. Epitope retrieval with citrate buffer pH 6.0 is recommended for FFPE tissue sections.</td></tr></table>	Western Blot	1:2,000 – 1:10,000	Immunoprecipitation	2 – 5 µg/mg lysate	Immunohistochemistry	1:200 – 1:1,000. Epitope retrieval with citrate buffer pH 6.0 is recommended for FFPE tissue sections.
Western Blot	1:2,000 – 1:10,000						
Immunoprecipitation	2 – 5 µg/mg lysate						
Immunohistochemistry	1:200 – 1:1,000. Epitope retrieval with citrate buffer pH 6.0 is recommended for FFPE tissue sections.						
APPLICATION NOTES	<p>Western blot of immunoprecipitates performed using Normal Pig Serum (Cat. No. S100-020), Goat anti-Rabbit Light Chain HRP Conjugate (Cat. No. A120-113P) and 4-8% SDS-PAGE (link to IP-western blot protocol in Additional Info section below).</p> <p>Western blot of lysates performed using standard western blot reagents and 4-8% SDS-PAGE.</p>						
IHC HUMAN CONTROLS	Anaplastic Thyroid Carcinoma, Prostate Carcinoma						
ADDITIONAL INFO	<p>https://www.bethyl.com/product/A301-228A</p> <p>Use the link above to view SDS, a current list of citations, and other product specific information.</p> <p>IP-western blot protocol https://www.bethyl.com/content/protocol_IP_WB</p>						

This document certifies that this product has met all of the quality control standards defined by Bethyl Laboratories, Inc.
Eric McIntush, PhD | Chief Scientific Officer Date: October 18, 2019



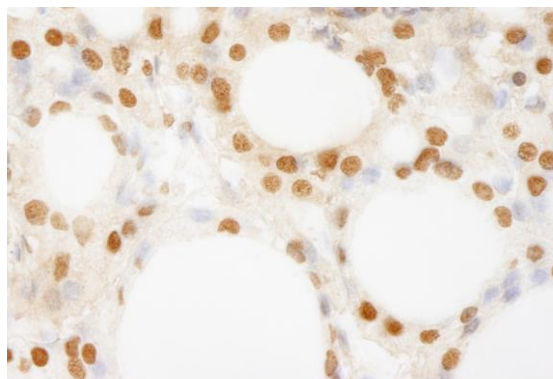
Detection of human and mouse BRF1 by western blot.

Samples: Whole cell lysate from HeLa (5, 15 and 50 μg), HEK293T (T; 50 μg), and mouse NIH 3T3 (M; 50 μg) cells.
Antibodies: Affinity purified rabbit anti-BRF1 antibody A301-228A (lot A301-228A-1) used for WB at 0.04 $\mu\text{g}/\text{ml}$.
Detection: Chemiluminescence with exposure time of 10 seconds.



Detection of human BRF1 by western blot of immunoprecipitation.

Samples: Whole cell lysate (1 mg for IP, 20% of IP loaded) from HeLa cells.
Antibodies: Affinity purified rabbit anti-BRF1 antibody A301-228A (lot A301-228A-1) used for IP at 3 $\mu\text{g}/\text{mg}$ lysate. BRF1 was also immunoprecipitated by rabbit anti-BRF1 antibody A301-227A, which recognizes an upstream epitope. For blotting immunoprecipitated BRF1, A301-228A was used at 1.0 $\mu\text{g}/\text{ml}$.
Detection: Chemiluminescence with exposure time of 3 seconds.



Detection of human BRF1 by immunohistochemistry.

Sample: FFPE section of human thyroid carcinoma.
Antibody: Affinity purified rabbit anti-BRF1 (Cat. No. A301-228A lot 1) used at a dilution of 1:200 (1 $\mu\text{g}/\text{ml}$).
Detection: DAB