

ERCC3 Antibody

Rabbit Polyclonal

Antigen Affinity Purified

Protein ID NP_000113.1

Catalog No. A301-337A

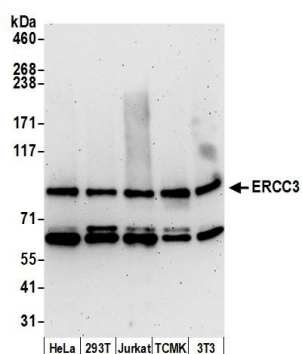
GeneID 2071

Lot No. A301-337A-2



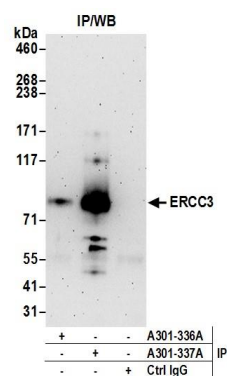
APPLICATIONS	WB, IP
SPECIES REACTIVITY	Human, Mouse
PRESUMED REACTIVITY	Based on 100% sequence identity, this antibody is predicted to react with Rat, Bovine and Orangutan
AMOUNT	100 µl
CONCENTRATION	1000 µg/ml
STORAGE/SHELF LIFE	2 - 8° C / 1 year from date of receipt
PHYSICAL STATE	Liquid
BUFFER	Tris-citrate/phosphate buffer, pH 7 to 8 containing 0.09% Sodium Azide
ISOTYPE	IgG
ORIGIN	USA
PRODUCTION PROCEDURES	<p>Antibody was affinity purified using an epitope specific to ERCC3 immobilized on solid support.</p> <p>The epitope recognized by A301-337A maps to a region between residue 732 and 782 of human excision repair cross-complementing rodent repair deficiency, complementation group 3 using the numbering given in entry NP_000113.1 (GeneID 2071).</p> <p>Immunoglobulin concentration was determined by extinction coefficient: absorbance at 280 nm of 1.4 equals 1.0 mg of IgG.</p>
APPLICATIONS	<p>Centrifuge tube to remove product from lid. Optimal working dilutions should be determined experimentally by the investigator. Prepare working dilution immediately before use.</p> <p>Western Blot 1:2,000 - 1:10,000</p> <p>Immunoprecipitation 2 - 5 µg/mg lysate</p>
APPLICATION NOTES	<p>Western blot of immunoprecipitates performed using Normal Pig Serum (Cat. No. S100-020), Goat anti-Rabbit Light Chain HRP Conjugate (Cat. No. A120-113P) and 4-8% SDS-PAGE (link to IP-western blot protocol in Additional Info section below).</p> <p>Western blot of lysates performed using standard western blot reagents and 4-8% SDS-PAGE.</p>
ADDITIONAL INFO	<p>https://www.bethyl.com/product/A301-337A</p> <p>Use the link above to view SDS, a current list of citations, and other product specific information.</p> <p>IP-western blot protocol: https://www.bethyl.com/content/protocol_IP_WB</p>

This document certifies that this product has met all of the quality control standards defined by Bethyl Laboratories, Inc.
Eric McIntush, PhD | Chief Scientific Officer Date: June 21, 2019



Detection of human and mouse ERCC3 by western blot.

Samples: Whole cell lysate (15 μ g) from HeLa, HEK293T, Jurkat, mouse TCMK-1, and mouse NIH 3T3 cells prepared using NETN lysis buffer. **Antibody:** Affinity purified rabbit anti-ERCC3 antibody A301-337A (lot A301-337A-2) used for WB at 0.1 μ g/ml. **Detection:** Chemiluminescence with an exposure time of 3 minutes.



Detection of human ERCC3 by western blot of immunoprecipitates.

Samples: Whole cell lysate (1.0 mg per IP reaction; 20% of IP loaded) from HEK293T cells prepared using NETN lysis buffer. **Antibodies:** Affinity purified rabbit anti-ERCC3 antibody A301-337A (lot A301-337A-2) used for IP at 3 μ g per reaction. ERCC3 was also immunoprecipitated by rabbit anti-ERCC3 antibody A301-336A. For blotting immunoprecipitated ERCC3, A301-337A was used at 1 μ g/ml. **Detection:** Chemiluminescence with an exposure time of 3 minutes.