

ERCC5/XPG Antibody

Rabbit Polyclonal

Antigen Affinity Purified

Protein ID NP_000114.2

Catalog No. A301-484A-M

GeneID 2073

Lot No. A301-484A-M-2



APPLICATIONS WB, IP, IHC

SPECIES REACTIVITY Human

AMOUNT 100 µl (10 blots)

CONCENTRATION 40 µg/ml

STORAGE/SHELF LIFE 2 - 8° C / 1 year from date of receipt

PHYSICAL STATE Liquid

BUFFER Tris-buffered Saline containing 0.1% BSA and 0.09% Sodium Azide

ISOTYPE IgG

ORIGIN USA

PRODUCTION PROCEDURES Antibody was affinity purified using an epitope specific to ERCC5/XPG immobilized on solid support.

The epitope recognized by A301-484A-M maps to a region between residue 650 and 700 of human excision repair cross-complementing rodent repair deficiency, complementation group 5 (xeroderma pigmentosum, complementation group G (Cockayne syndrome)) using the numbering given in entry NP_000114.2 (GeneID 2073).

APPLICATIONS Centrifuge tube to remove product from lid. Optimal working dilutions should be determined experimentally by the investigator. Prepare working dilution immediately before use.

Western Blot 1:1000

Immunoprecipitation The antibody contained within A301-484A-M has been qualified for use in immunoprecipitation; however, we recommend using the alternative formulation of this antibody found as product A301-484A.

Immunohistochemistry 1:20 to 1:100. Epitope retrieval with citrate buffer pH6.0 is recommended for FFPE tissue sections.

APPLICATION NOTES Western blot of immunoprecipitates performed using Normal Pig Serum (Cat. No. S100-020), Goat anti-Rabbit Light Chain HRP Conjugate (Cat. No. A120-113P) and 4-8% SDS-PAGE (link to IP-western blot protocol in Additional Info section below).

Western blot of lysates performed using standard western blot reagents and 4-8% SDS-PAGE.

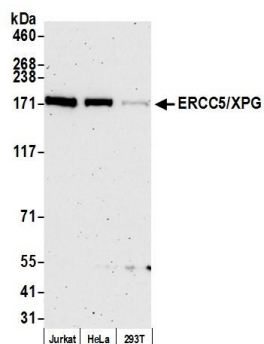
ADDITIONAL INFO

<https://www.bethyl.com/product/A301-484A-M>

Use the link above to view SDS, a current list of citations, and other product specific information.

IP-western blot protocol https://www.bethyl.com/content/protocol_IP_WB

This document certifies that this product has met all of the quality control standards defined by Bethyl Laboratories, Inc.
Eric McIntush, PhD | Chief Scientific Officer Date: January 2, 2020



Detection of human ERCC5/XPG by western blot. *Samples:* Whole cell lysate (50 μ g) from Jurkat, HeLa, and HEK293T cells prepared using NETN lysis buffer. ***Antibody:*** Affinity purified rabbit anti-ERCC5/XPG antibody A301-484A-M (lot A301-484A-M-2) used for WB at 1:1000. ***Detection:*** Chemiluminescence with an exposure time of 3 minutes.