

ERCC5/XPG Antibody

Rabbit Polyclonal

Antigen Affinity Purified	RefSeq ID	NP_000114.2
Catalog No. A301-484A-T	Uniprot ID	P28715
Lot No. 3	GeneID	2073

APPLICATIONS	WB, IP, IHC
SPECIES REACTIVITY	Human
AMOUNT	10 µl
CONCENTRATION	1000 µg/ml
STORAGE/SHELF LIFE	2 – 8°C / 1 year from date of receipt
PHYSICAL STATE	Liquid
BUFFER	Tris-citrate/phosphate buffer, pH 7 to 8 containing 0.09% Sodium Azide
ISOTYPE	IgG
ORIGIN	USA
PRODUCTION PROCEDURES	Antibody was affinity purified using an epitope specific to ERCC5/XPG immobilized on solid support.

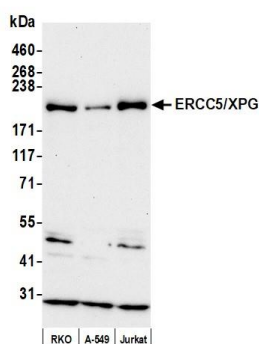
The epitope recognized by A301-484A-T maps to a region between residue 650 and 700 of human excision repair cross-complementing rodent repair deficiency, complementation group 5 (xeroderma pigmentosum, complementation group G (Cockayne syndrome)) using the numbering given in entry NP_000114.2 (GeneID 2073).

APPLICATIONS	Centrifuge tube to remove product from lid. Optimal working dilutions should be determined experimentally by the investigator. Prepare working dilution immediately before use.
	Western Blot 1:2,000 – 1:10,000
	Immunoprecipitation 2 – 10 µg/mg lysate
	Immunohistochemistry 1:500 to 1:2,000. Epitope retrieval with citrate buffer pH6.0 is recommended for FFPE tissue sections.

IHC HUMAN CONTROLS Colon Carcinoma, Ovarian Carcinoma

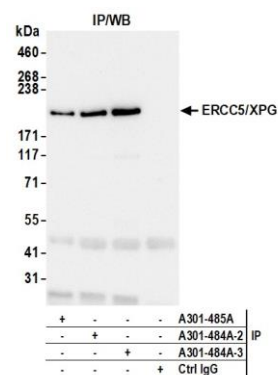
ADDITIONAL INFO <https://www.fortislife.com/p/A301-484A-T>
Use the link above to view SDS, a current list of citations, and other product specific information.

This document certifies that this product has met all of the quality control standards defined by Bethyl Laboratories, Inc.
Michael Spencer, PhD Date: April 25, 2023



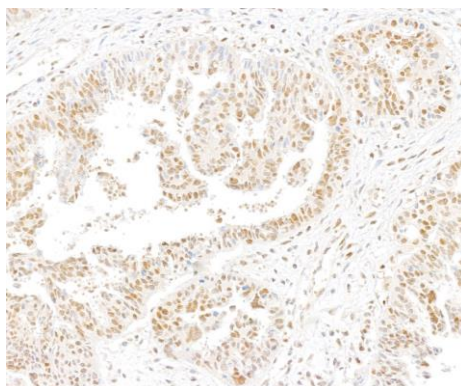
Detection of human ERCC5/XPG by western blot.

Samples: Whole cell lysate (50 µg) from RKO, A-549, and Jurkat cells prepared using NETN lysis buffer. *Antibody:* Affinity purified rabbit anti-ERCC5/XPG antibody (A301-484A lot 3) used for WB at 0.4 µg/ml. *Detection:* Chemiluminescence with an exposure time of 75 seconds.



Detection of human ERCC5/XPG by western blot of immunoprecipitates.

Samples: Whole cell lysate (1.0 mg per IP reaction; 20% of IP loaded) from Jurkat cells prepared using NETN lysis buffer. *Antibodies:* Affinity purified rabbit anti-ERCC5/XPG antibody (A301-484A lot 3) used for IP at 6 µg per reaction. ERCC5/XPG was also immunoprecipitated by a previous lot of this antibody (A301-484A lot 2) and a second antibody against a different epitope of ERCC5/XPG (A301-485A). For blotting immunoprecipitated ERCC5/XPG, A301-484A was used at 0.04 µg/ml. *Detection:* Chemiluminescence with an exposure time of 10 seconds.



Detection of human ERCC5/XPG by immunohistochemistry.

Sample: FFPE section of human colon carcinoma. *Antibody:* Affinity purified rabbit anti-ERCC5/XPG (A301-484A lot 3) used at a dilution of 1:1000 (0.2µg/ml). *Detection:* DAB